

TOTAL ECLIPSE OF THE HEART

Copyright © 1982 by Lost Boys Music
 Administered by Edward B. Marks Music Co. for the United States and Canada
 Used by Permission

Words and Music by
 JIM STEINMAN

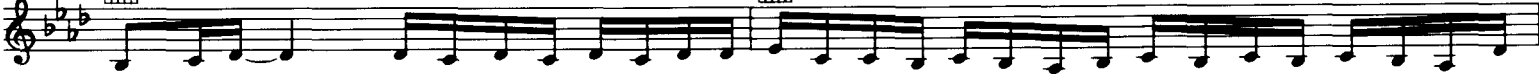
Steady Rock



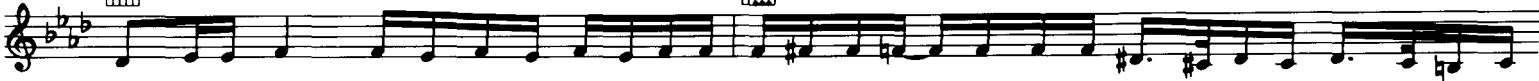
Turn a - round _ Ev - ery now and then I get a lit - tle bit lone - ly and you're ne - ver com - ing round _
 Turn a - round _ Ev - ery now and then I get a lit - tle bit rest - less and I dream of some - thing wild _

(Instrumental / Verse 3)

Bbm



Turn a - round _ Ev - ery now and then I get a lit - tle bit tired _ of lis - ten - ing to the sound of my tears,
 Turn a - round _ Ev - ery now and then I get a lit - tle bit help - less and I'm ly - ing like a child in your arms,



Turn a - round _ Ev - ery now and then I get a lit - tle bit ner - vous that the best of all the years have gone by.
 Turn a - round _ Ev - ery now and then I get a lit - tle bit an - gry and I know I've got to get out and cry.

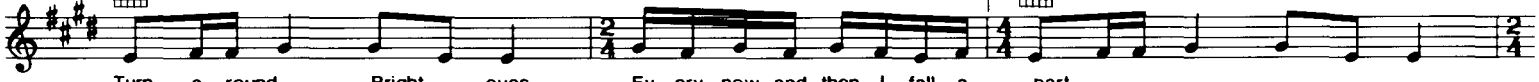


Turn a - round _ Ev - ery now and then I get a lit - tle bit ter - ri - fied and then I see the look in your eyes.
 Turn a - round _ Ev - ery now and then I get a lit - tle bit ter - ri - fied but then I see the look in your eyes.

CHORUS



1



Turn a - round _ Bright _ eyes Ev - ery now and then I fall a - part
 Turn a - round _ bright _ eyes

2



Ev - ery now and then I fall a - part
 Turn a - round _ Bright _ eyes _ Ev - ery now and then I fall a -

MIDDLE



part and I need you now _ to - night; And I need you more _ than ev - er And if you on - ly hold _ me tight



we'll be hold - ing on _ for - ev - er, And we'll on - ly be ma - king it



right _ 'cause we'll ne - ver be wrong _ to geth - er we can take it to the end of the line. Your