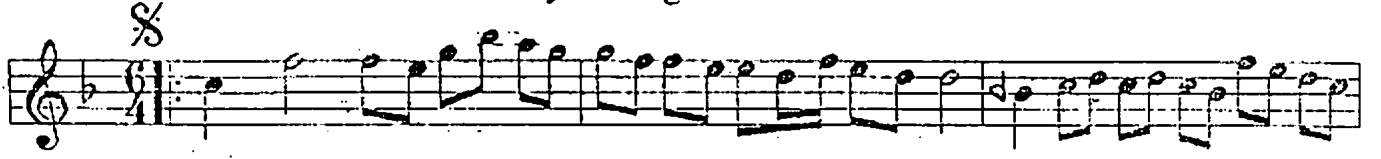


# ACEMAŞIRÂN YÜRÜKSEMÂİ

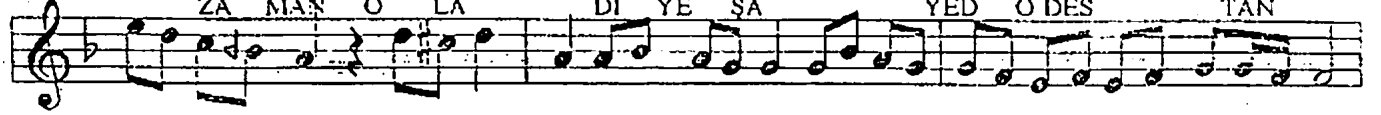
YürükSemâî

"Bileydi dil gibi dilber"

ITRÎ



Bİ LEY Dİ DİL Gİ Bİ DİL BER GA Mİ Cİ HÂN  
Bİ LEY Dİ ÇEŞ Nİ İ Şİ VE İ BE YÂN  
ZA MAN O LA Dİ YE ŞÂ YED O DES TÂN



Nİ CE DİR YÂR LELEL Lİ VAY  
Nİ CE DİR  
Nİ CE DİR



YÂ LE LEL LE LEL İ TE RE LE LEL



LE LEL Lİ AH AH



CÂ NİM YA LE LEL



LE LEL Lİ TE RE LE LEL LE LEL Lİ



DOST LEL LEL



LEL Lİ YE LE YE LEL Lİ TE RE Lİ

