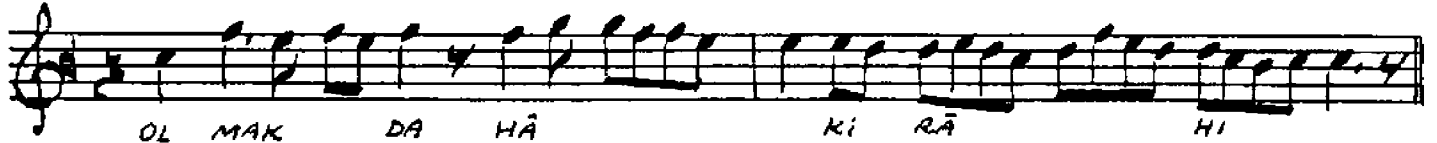


AH BİR ŞEH Kİ TÂ Cİ DÂ RAN
AH Â ŞİK LA RİN YÜ ZÜ NE



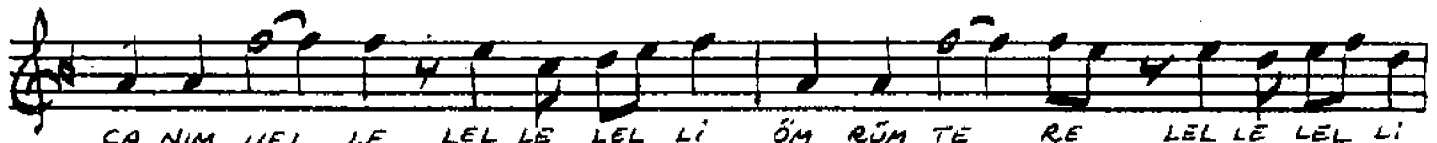
OL MAK DA HÂ Kİ RÂ HI
ÇER HI Sİ YÂH E DER SİN



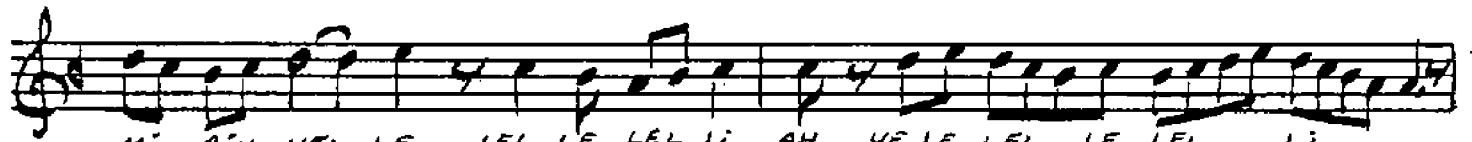
BEN Gİ Bİ BİR GE DÂ YA
GÂ HI Kİ SEN Gİ YER SİN



MÜŞ KİL A NİN Nİ GÂ HI
BU AT LA Sİ Sİ YÂ HI



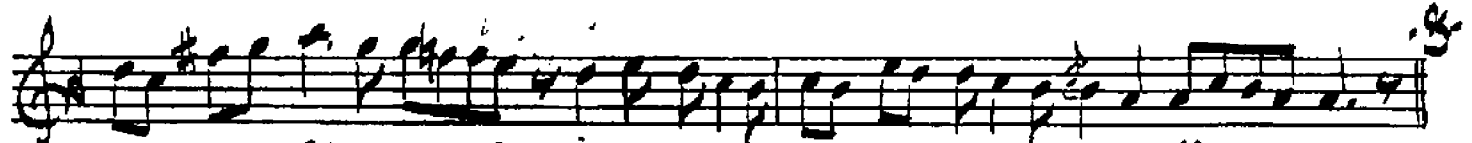
CA NİM YEL LE LEL LE LEL Lİ ÖM RUM TE RE LEL LE LEL Lİ



MI RİM YEL LE LEL LE LEL Lİ AH YE LE LEL LE LEL Lİ



KUR BA Nİ NAM HAY RA Nİ NAM



MEN BEN DE İ FER MA Nİ NAM

BİR ŞEH Kİ TÂÇ-DARÂN OLMAKDA HÂK-İ RÂHİ
BEN GİBİ BİR GEDÂYA MÜSKİL ANIN NİGÂHİ
AŞIKLARIN HÜCUMNE ÇERHİ SİYÂH EDERSİN
ÇÂHİ Mİ BEN GİHERSİN BU ATLAS-İ SİYÂHİ

Zekâî Dede Külliyyeti 1/63
4.2.1990

Ömer Köse

Acem makamında ve lenk fahte üsulünde

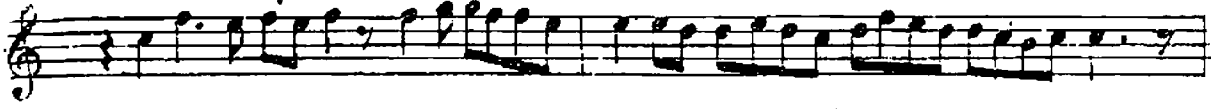
Zekai Dede

nakş beste

Ah birşeh — hi ta — ta ci — da — rân —



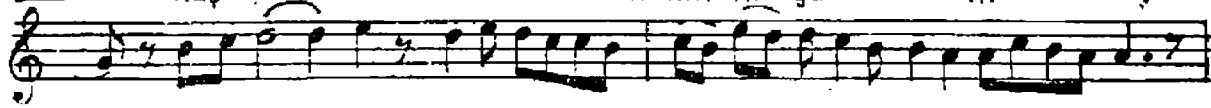
oi mak — da — na — hahi ra — hi —



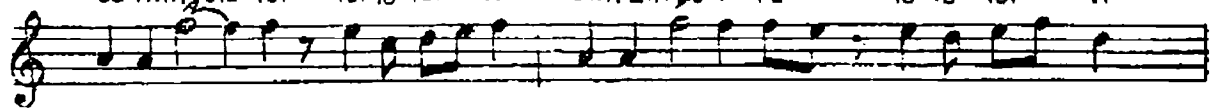
ben gi — bi — bir — bir ge da — ye —



müş hil — a — nın — nın ni ga — hi —



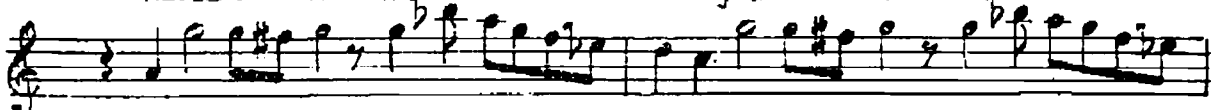
canım yel — le — le le — li — ömrüm — re — le le — li —



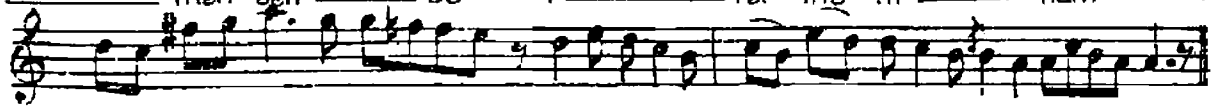
mi — rim ye — le — le le — li — ah ye le — le le — li —



kurba — ni nam — hayra — n — nam —



men ben — de — i — fer ma ni — nam —



Bir şehki tâcidaran olmakda hakirahi
Ben gibi bir gedaye müşkülânın nigâhi
(Terennüm)

Canım yel le le le li ömrüm tere le le li mirim ye le
Le le le li ah ye le le le li kurbanınam hayranınam

Men bendei fermanınam

Aşıkların yüzüne çerhi siyah ider sin
Kâhiki sen giyersin bu atlası siyahi
(Terennüm)