

ACEM AŞIRAN ŞARKI

4008

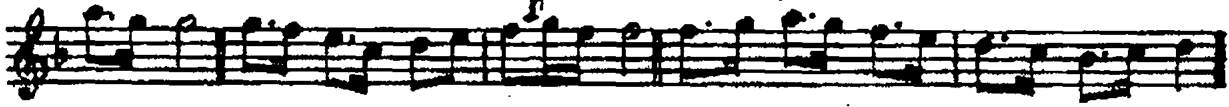
Sengin semâi

Bimen Şen

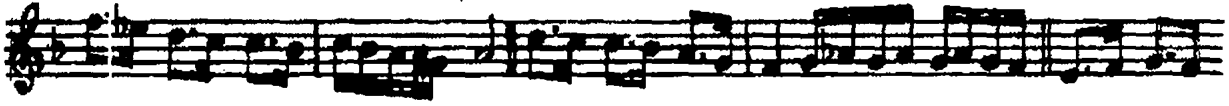
Ey bağı hüs nün dil cu ni ha li ey bağı



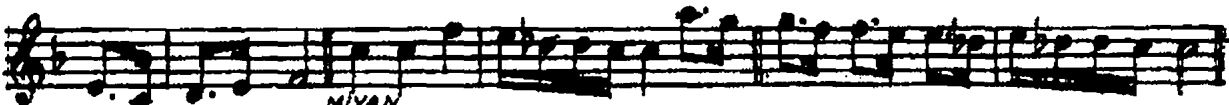
hüs nün dil cu ni ha --- li ya det bi rın ci ---



bez mi vi sa --- li ya det bi rinci --- bez mi



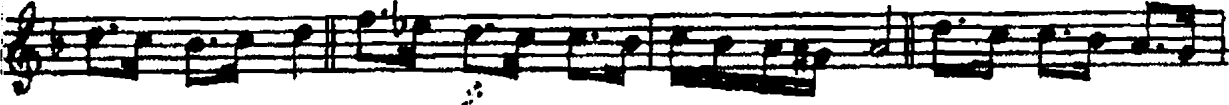
vi sa li bulmuşdu ne --- ş ve m had di ke ma --- li



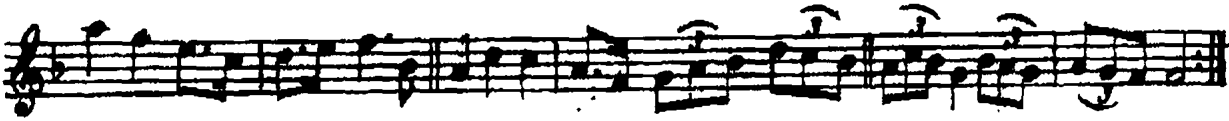
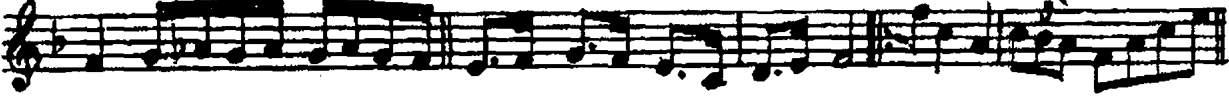
bulmuş du neş vem had di ke ma --- li der din bu



aş kı --- n yok tur ze va --- li der din bu



aş kı --- n yok tur ze va li KODA



Ey bağı: hüsnün dilcu nihali,

Yadet birinci bezm-i visali,

Bulmuştu neşvem had'i kemali,

Derdin bu aşkın yoktur zevali.