

ACEM-KÜRDÎ YÜRÜK SEMÂÎ
GÖNLÜM YİNE OL ŞÜH-İ SİTEMKÂRE Mİ KALDI

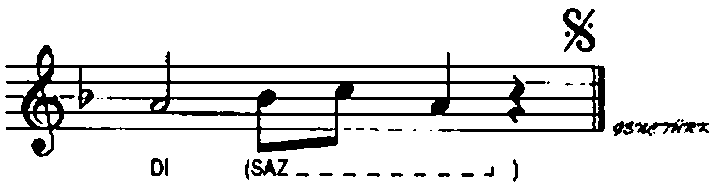
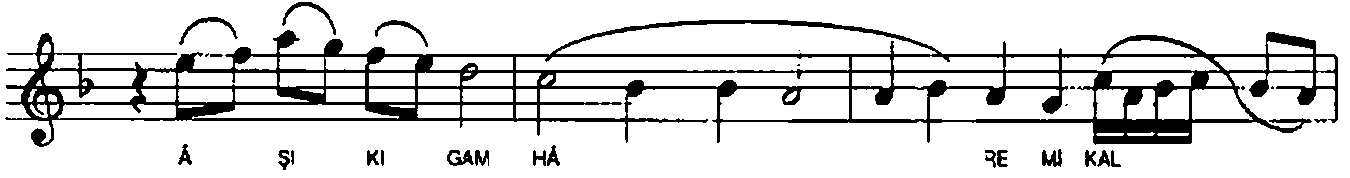
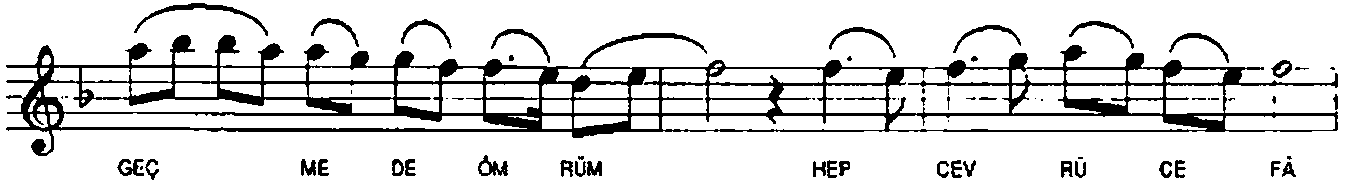
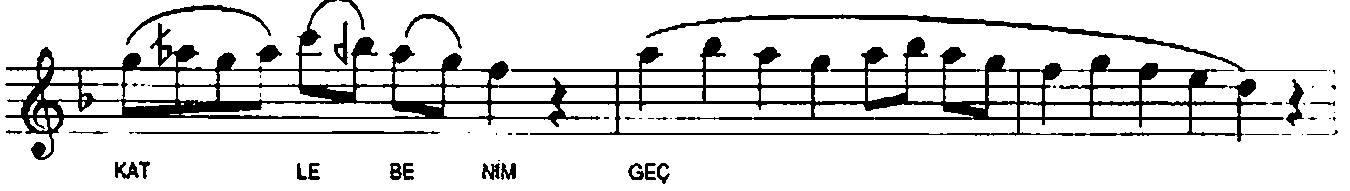
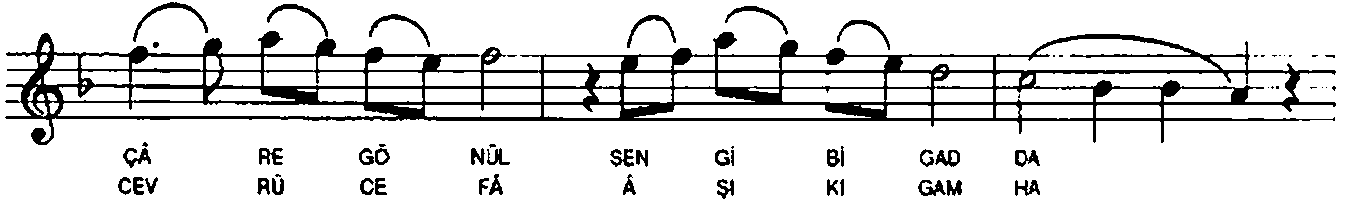
MÜZİK : Muallim İsmail Hakkı Bey
SÖZ : .

USÛLÜ : Yürük Semâî

GÖN LÜM Yİ NE OL ŞÜ HI Sİ TEM
KÂ KÂ RE Mİ KAL DI Bİ
ÇÂ RE GÖ NÜL SEN Gİ Bİ GAD DÂ
DÂ RE Mİ KAL DI (SAZ - - - -) GEL
GEL GEL İŞ VE BÂ ZİM (SAZ - - - -)
GEL GEL GEL ÇÂ RE SÂ
ZİM (SAZ - - - -) TE NEN TE NEN Nİ TE NE NEN
NÂ TE NE DİR NEY TE NEN TE NEN
Nİ TE NE NEN NA TE NE DİR HEY Bİ
HEP

GÖNLÜM YİNE OL ŞÜH-İ SİTEMKÂRE Mİ KALDI

-2-



GÖNLÜM YİNE OL ŞÜH-İ SİTEMKÂRE Mİ KALDI
BİÇÂRE GÖNÜL SEN GİBİ GADDARE Mİ KALDI
BİN YE'S Ü MESAKKATLE BENİM GEÇMEDE ÖMRÜM
HEP CEVR Ü CEFÂ ÂŞİK-İ GAMHÂRE Mİ KALDI