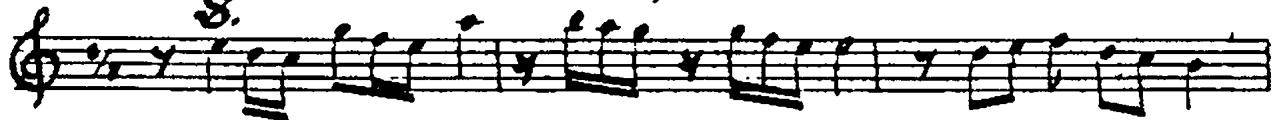


Düyek

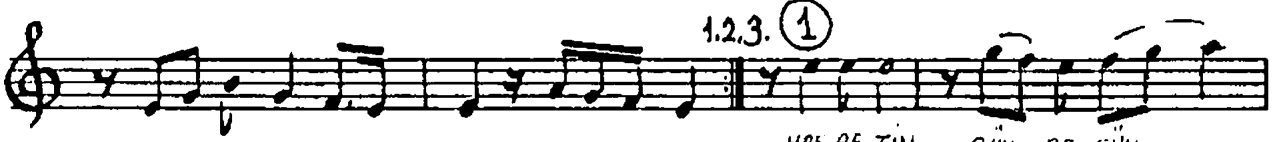
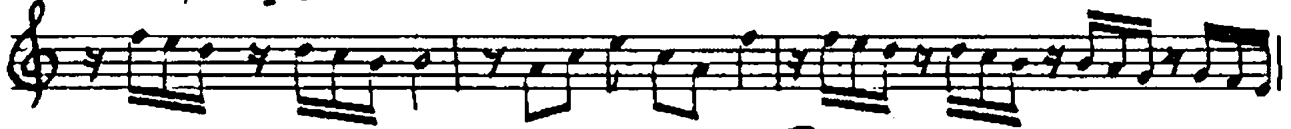
Aşkîzâ şarkı Othman Kızıksavaş

Süre : 05.15

Hasretin günbe gün büyür içinde

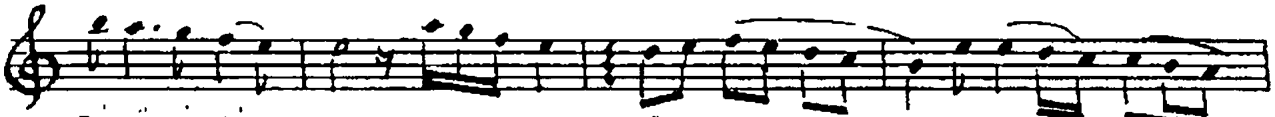


Başaraneşme

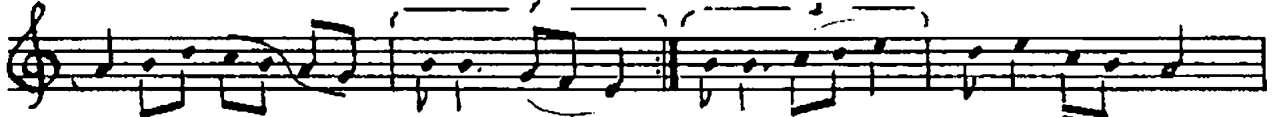


1.2.3. ①

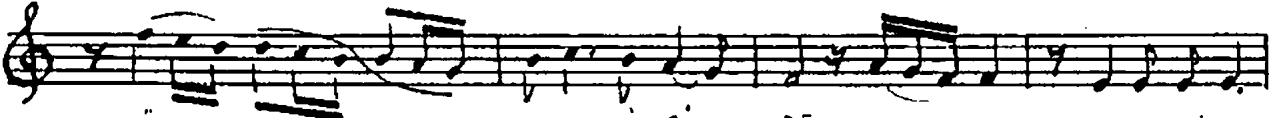
HAS.RE.TİN GÜN - BE - GÜN



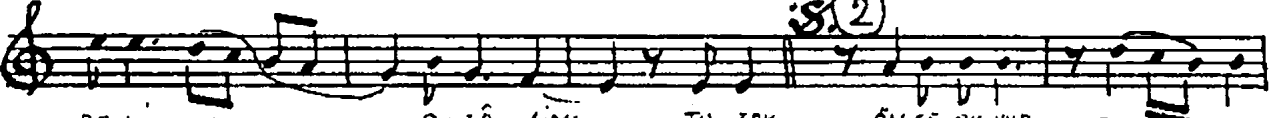
BU YÜR İ ÇİM - DE - 502 - NE KA. DAR YA KIN - SIN



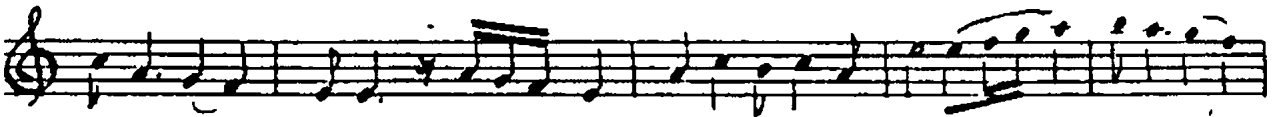
NE KA. DAR U. ZAK - 502 - U. ZAK - 502 - A - ZAP VE - REN



DÜS - LER U. YÜR İ ÇİM - DE 502 - KAH RE. Dİ. YCR



BE. Nİ AH BU ZÂ - LIM TU. ZAK ÖN. CE BU. YÜR ET - TİN,



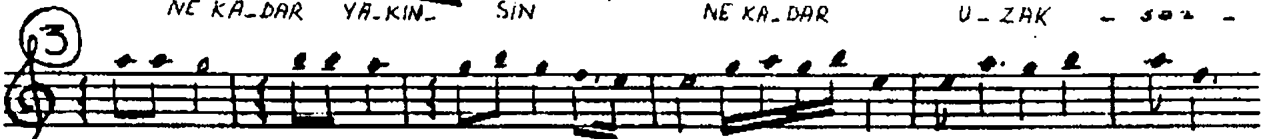
GEL ET. TİN FE LEK - 502 - KIR DIN BİLİ, DA - LI, AH YELET. TİN



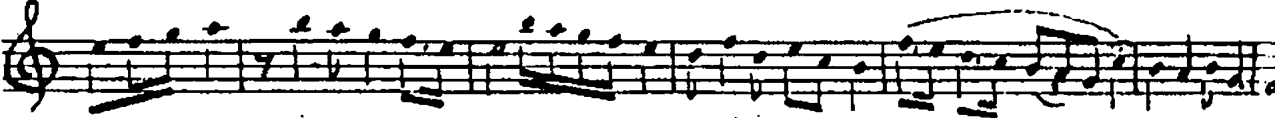
FE. LEK - 502 - NA. SİL BE. Nİ BA - NA AH EL ET. TİN FE LEK - 502 -



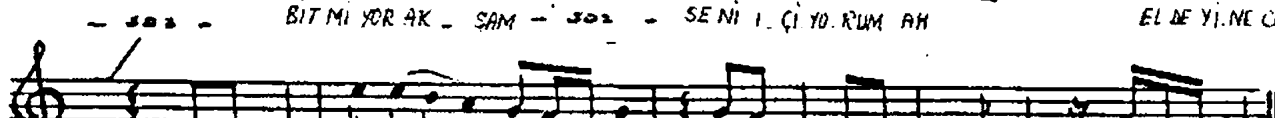
NE KA - DAR YA - KIN - SIN NE KA. DAR U - ZAK - 502 -



YÜ ZÜ. NÜ . GÖ. RÜ. RÜM NERE YE BAK - SAM - 502 - ŞA. FAK YIL LAR Ö - TE,



- 502 - BIT MI YOR AK - SAM - 502 - SE Nİ İ Çİ YO. RUM AH EL DE Yİ. NE CAM



NE KA DAR YA .KIN - SIN NE KA. DAR U - ZAK - 502 -