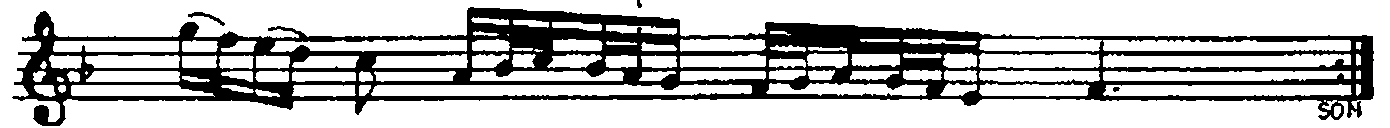
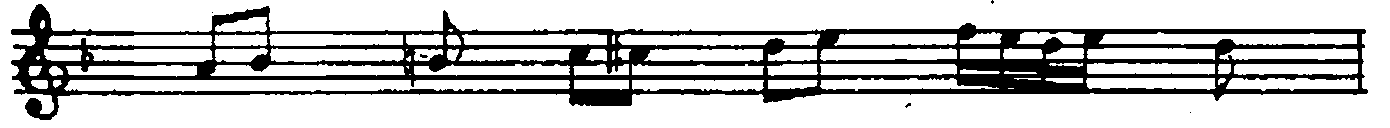
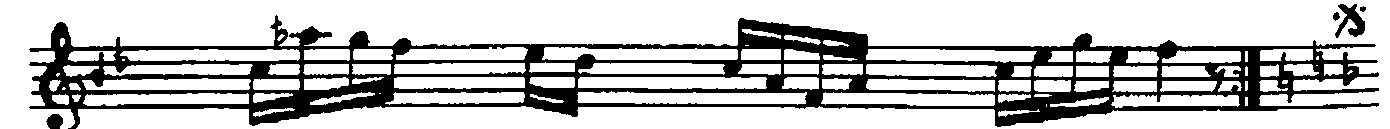
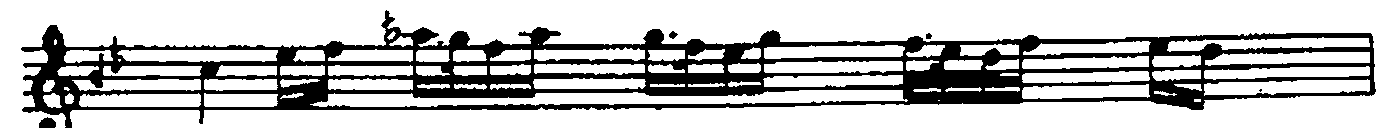
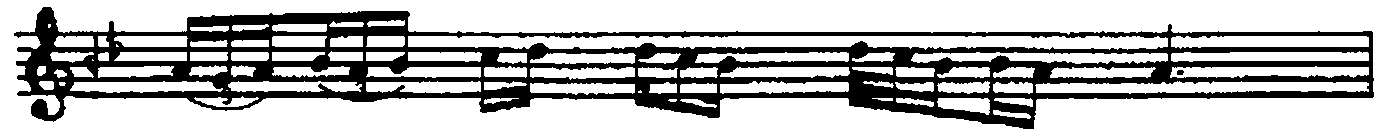


AKSAK SEMÂİ ACEMASİRAN SAZ SEMÂİSİ

MÜZİK : REŞİK TAL'AT ALPMAN



2.HANE



3. HANE

The 3rd Hane section consists of four staves of music. The first staff begins with a treble clef, a key signature of one flat (B-flat), and a common time signature. The music features a series of eighth and sixteenth notes, with some beamed together. The second staff continues the melodic line. The third staff includes a triplet of eighth notes. The fourth staff concludes the section with a double bar line and a repeat sign.

4. HANE

Y.SEMĀI

SEMĀI

The 4th Hane section consists of ten staves of music. The first staff begins with a treble clef, a key signature of two flats (B-flat and E-flat), and a 3/4 time signature. The music is characterized by a steady eighth-note rhythm. The second staff continues the melodic line. The third staff includes a triplet of eighth notes. The fourth staff continues the melodic line. The fifth staff continues the melodic line. The sixth staff continues the melodic line. The seventh staff continues the melodic line. The eighth staff continues the melodic line. The ninth staff continues the melodic line. The tenth staff concludes the section with a double bar line and a repeat sign.