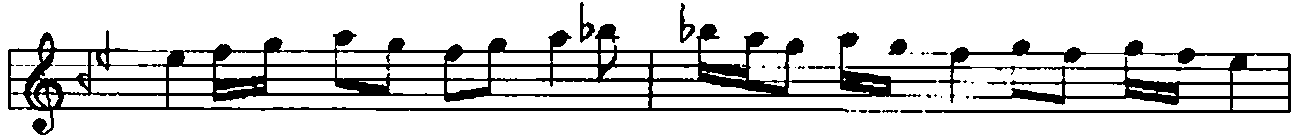


ARAZBAR SAZ SEMÂSİ

USUL: AKSAK SEMÂİ

BESTE: TANBURI EMİN AĞA

1.HANE



MÛLÂZİME %



2.HANE



3.HANE

Musical notation for section 3.HANE, consisting of four staves of music. The notation is written on a single treble clef staff. The key signature is one flat (B-flat), and the time signature is 10/8. The music features a series of eighth and sixteenth notes, with some rests and accidentals (sharps and flats). The piece concludes with a double bar line and a repeat sign.

4.HANE

Musical notation for section 4.HANE, consisting of five staves of music. The notation is written on a single treble clef staff. The key signature is one flat (B-flat), and the time signature is 10/8. The music features a series of eighth and sixteenth notes, with some rests and accidentals (sharps and flats). The piece concludes with a double bar line and a repeat sign.