

EVİÇ ŞARKI

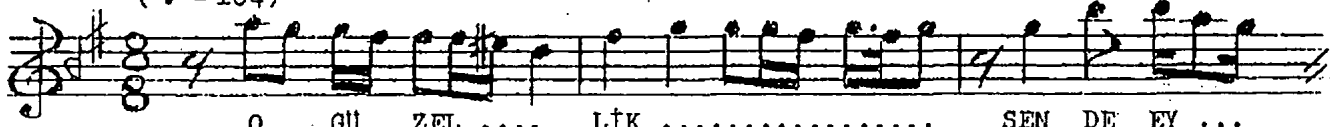
Güfte ve Beste

DUYUK

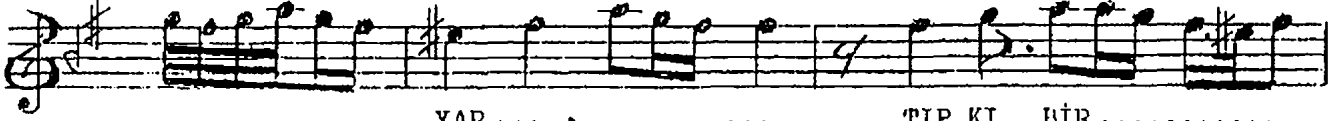
(O güzellik sende ey yâr tıpkı bir şiir gibi)

AHMET UZEL

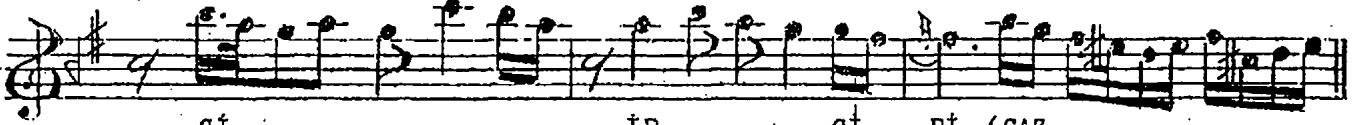
(♩ = 104)



O GÜ ZEL LİK SEN DE EY ...



..... YAR TIP KI BİR.....



Şİ İR Gİ Bİ (SAZ



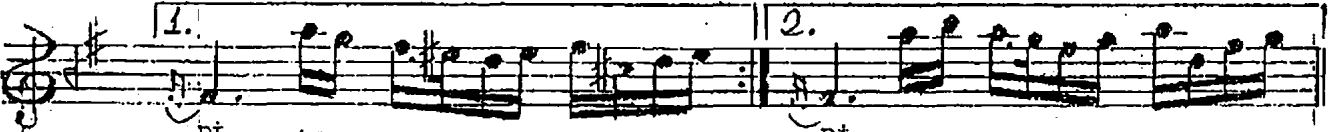
...) REN Gİ ZUM İRÜT O BA KIŞ LAR



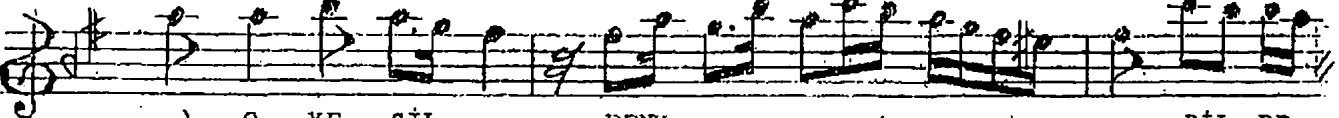
GÜZ LE RİN VAR SAN KI BİR KAL Bİ YA KAR SAN KI BİR.....



ZE HİR HİR Gİ Gİ



Bİ Bİ (SAZ Bİ



..) O YE ŞİL ... RENK DİL DE



BA HAR TAT LI BİR.....



Şİ HİR Gİ Bİ (SAZ



KARAR Bİ E.B. :

O GÜZELLİK SENDE EY YÂR TİPKİ BİR ŞİİR GİBİ
RENG-İ ZUMRÜT GÜZLERİN VAR SANKİ BİR ZEHİR GİBİ
O YEŞİL RENK DİLDE BAHAR TATLI BİR SİHİR GİBİ
O BAKIŞLAR KALBİ YAKAR SANKİ BİR ZEHİR GİBİ