

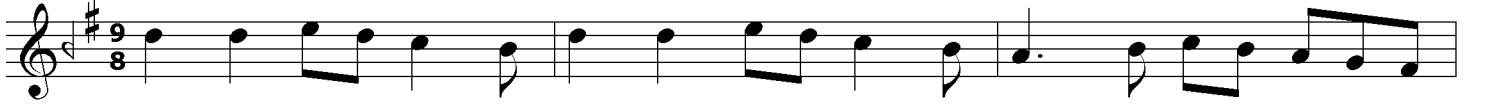
EVC TÜRKÜ

KÂKÜLLERİ LÜLE LÜLE

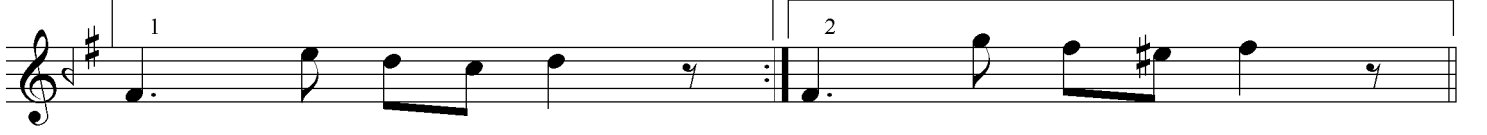
USÛLÜ : AKSAK

♩ = 150

MÜZİK : TANBURACI MUSTAFA ÇAVUŞ



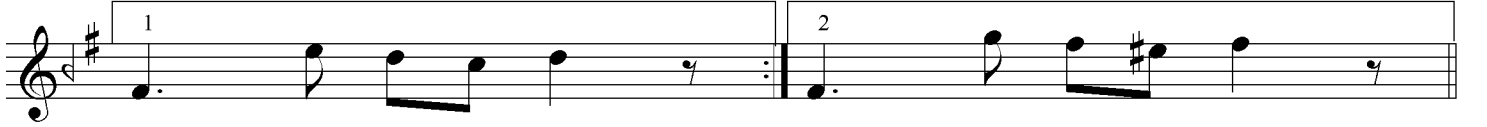
ARANAĞME



KÂ KÜL LE Rİ LÜ LE LÜ LE



GEL KAR ŞI MA GEL KAR ŞI MA GÜ LE GÜ



LE (SAZ) LE (SAZ)



BEN SE Nİ SEV DİM Bİ LE Bİ LE



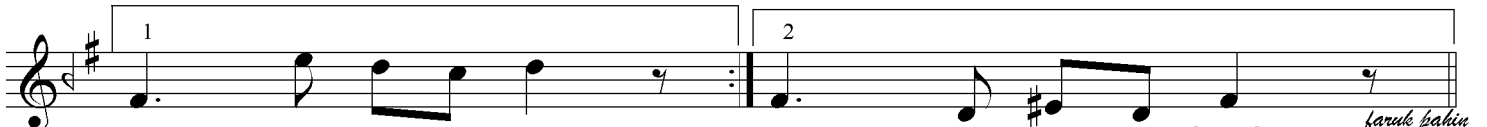
GA LA TA BAS MA SI U RU ME Lİ YOS MA SI SAR SAK OL MAZ MI (SAZ)



YİR Mİ LİK AL TI NI O BE YAZ GER DA NA



TAK SAK OL MAZ MI HAY Dİ GEL TAK SAK OL MAZ



MI (SAZ) MI (SAZ (SON))

faruk bakır