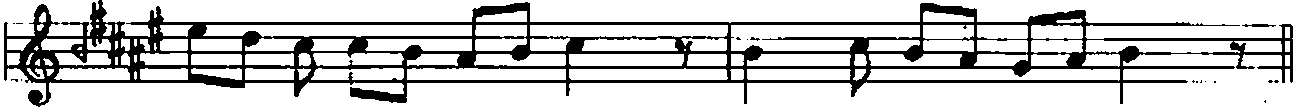


EVCÂRÂ SAZ SEMÂİSİ

AKSAK SEMÂİ

BESTE: TANBURI
DİLHAYAT KALFA

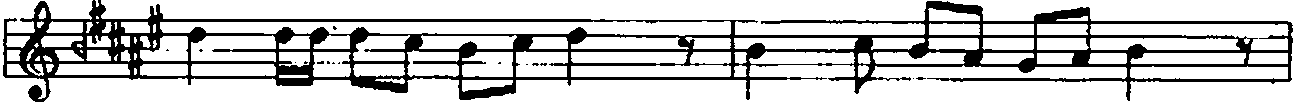
Birinci Hane



Teslim

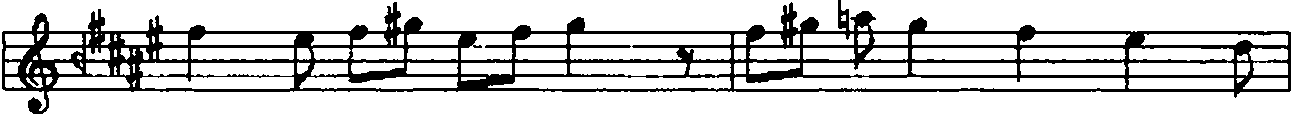
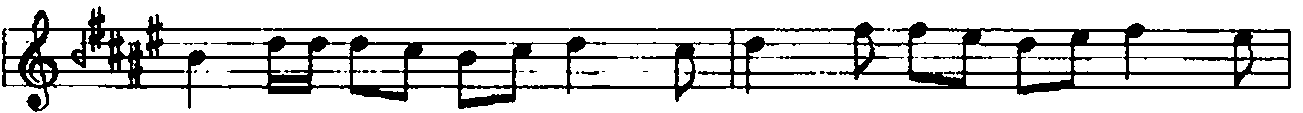


Mülâzime §



SON

İkinci Hane



Teslim

§



Üçüncü Hane



Musical notation for Üçüncü Hane, consisting of four staves. The key signature is three sharps (F#, C#, G#) and the time signature is 2/4. The notation includes various note values, rests, and accidentals. A double bar line with a repeat sign is at the end of the fourth staff.

Dördüncü Hane



Musical notation for Dördüncü Hane, consisting of eight staves. The key signature is three sharps (F#, C#, G#) and the time signature is 2/4. The notation includes various note values, rests, and accidentals. A double bar line with a repeat sign is at the end of the eighth staff.

Teslim



Musical notation for Teslim, consisting of one staff. The key signature is three sharps (F#, C#, G#) and the time signature is 2/4. The notation includes various note values, rests, and accidentals. A double bar line with a repeat sign is at the end of the staff.