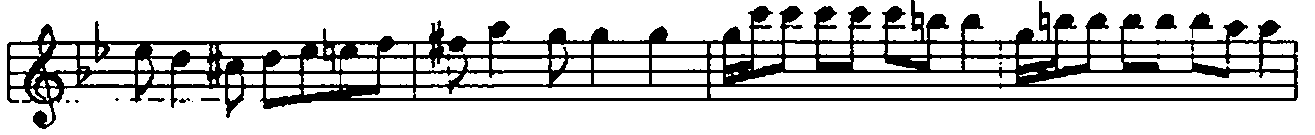


FERAHNÜMÂ PEŞREV

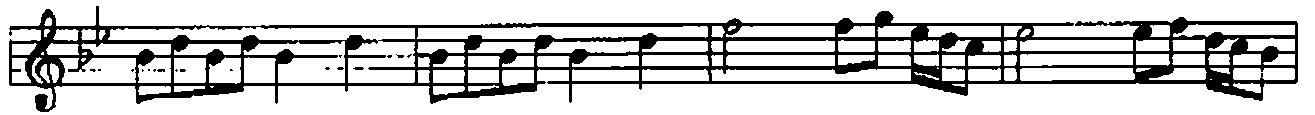
USÛL: DÜYEK

BESTE: H. SADETTİN AREL

Birinci Hane



Mülâzıme 



SON

İkinci Hane

The second hane consists of eight staves of musical notation. The first staff begins with a treble clef, a key signature of two flats (B-flat and E-flat), and a common time signature. The melody is written in a single system. The notation includes various rhythmic values such as eighth and sixteenth notes, as well as rests. The piece concludes with a double bar line and a repeat sign.

Üçüncü Hane

The third hane consists of four staves of musical notation. It begins with a treble clef, a key signature of two flats, and a common time signature. The melody is written in a single system. The notation includes various rhythmic values such as eighth and sixteenth notes, as well as rests. The piece concludes with a double bar line and a repeat sign.

Dördüncü Hane

The image displays a musical score for a piece titled "Dördüncü Hane". The score is written on five staves, each beginning with a treble clef and a key signature of two flats (B-flat and E-flat). The notation includes various rhythmic values such as eighth and sixteenth notes, as well as rests. The first staff features a melodic line with a mix of eighth and sixteenth notes. The second staff continues this melodic line with similar rhythmic patterns. The third staff shows a more rhythmic accompaniment with dotted eighth notes and sixteenth notes. The fourth and fifth staves provide further melodic and rhythmic development, with the fifth staff ending in a double bar line and a repeat sign.