

T.R.T Müzik Dairesi

T. S. M REP. NO: 20413

HİCÂZ ŞARKI

BANA BİR İSTANBUL ŞARKISI GÖNDER

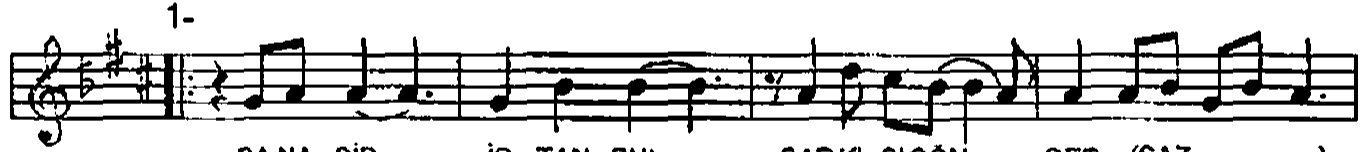
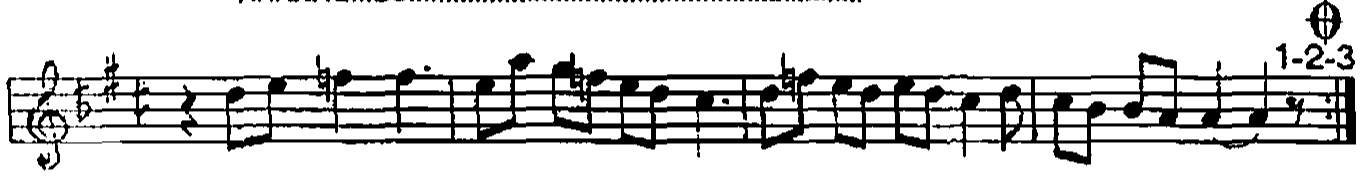
Usulü: AKSAK

♩ :240 Süre :6'.36"

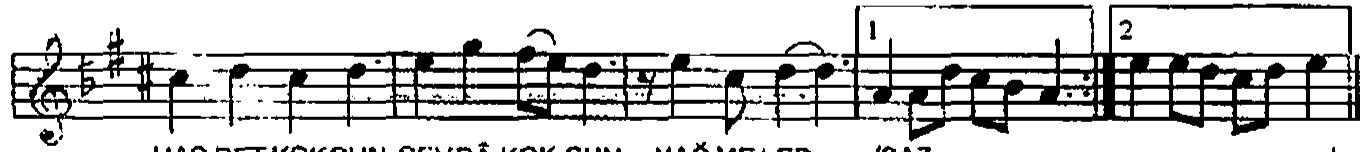
Beste ve Güfte:
Taner ÇAĞLAYAN



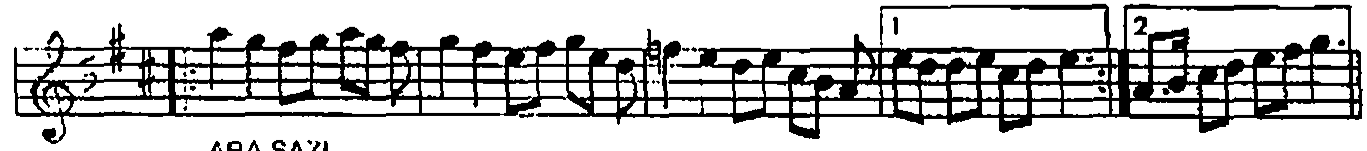
ARANAĞMESİ.....



BANA BİR İSTANBUL ŞARKI SİGÖN DER (SAZ.....)



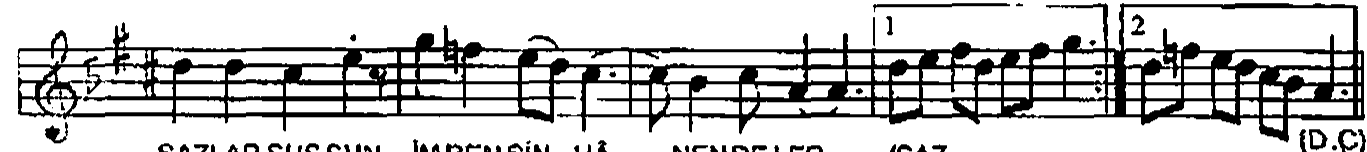
HAS RET KOKSUN SEVDÂ KOK SUN NAĞ ME LER (SAZ.....)



ARA SAZI.....



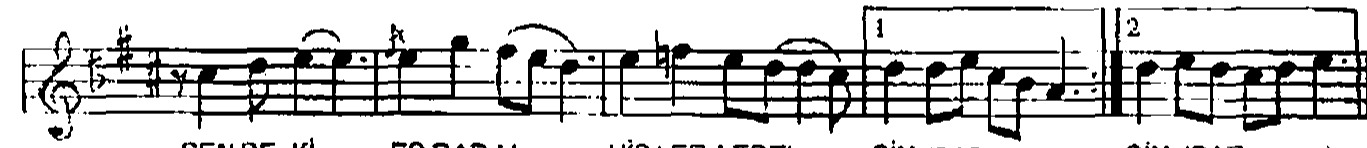
SEN DE KA TIL ÂHEN GİNE MEC Lİ SİN (SAZ.....)



SAZLAR SUS SUN İMRENSİN HÂ NENDE LER (SAZ.....) (D.C.)



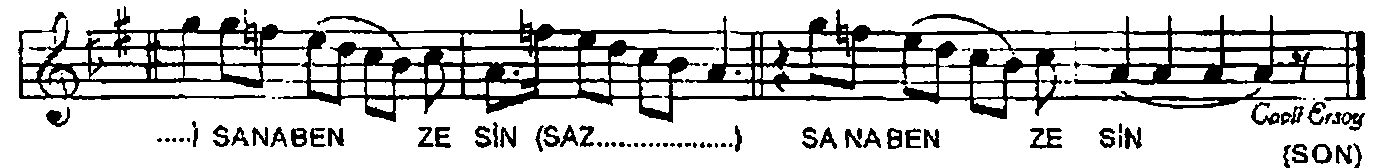
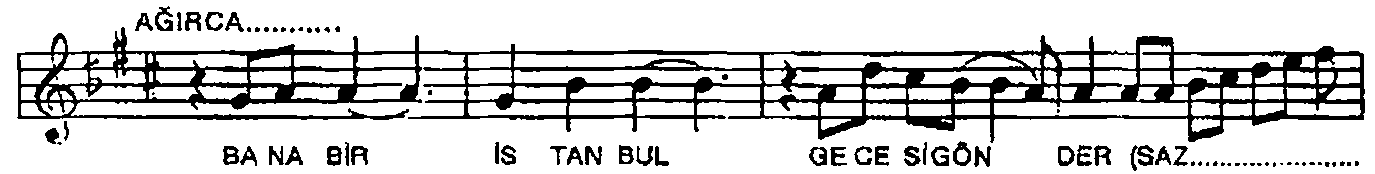
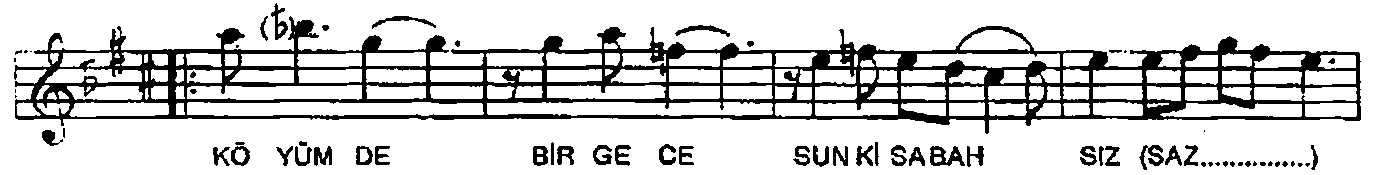
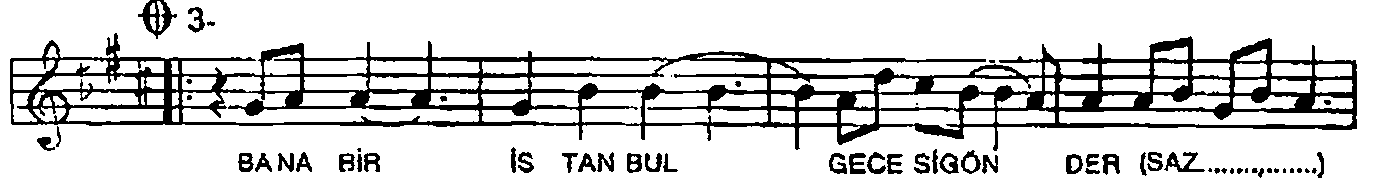
BA NA BİR İSTANBUL RÜZ GÂ RIGÖN DER (SAZ.....)



SEN DE Kİ ES RAR LI HİS LER LEGEL SİN (SAZ.....) SİN (SAZ.....)



ARA SAZI.....



Cağrı Ersoy
(SON)

BANA BİR İSTANBUL ŞARKISI GÖNDER
HAŞRET KOKSUN SEVDÂ KOKSUN NAĞMELER
SEN DE KATIL ÂHENGİNE MECLİSİN
SAZLAR SUSSUN İMRENSİN HÂNEDELER

BANA BİR İSTANBUL RÜZGÂRI GÖNDER
SENDEKİ ESRARLI HİSLERLE GELSİN
DAĞITSIN UFKUMU KESEN SİSLERİ
GELECEĞİN GÜN DEN MÜJDELER VERSİN

BANA BİR İSTANBUL GECESİ GÖNDER
MEHTÂBI, YILDIZI SANA BENZESİN
KÖYÜMDE BİR GECE SUN KI SABAH SIZ
HER HÂLİYLE İSTANBUL'A BENZESİN

BANA BİR İSTANBUL GECESİ GÖNDER, SANA BENZESİN