

HICAZ ŞARKI

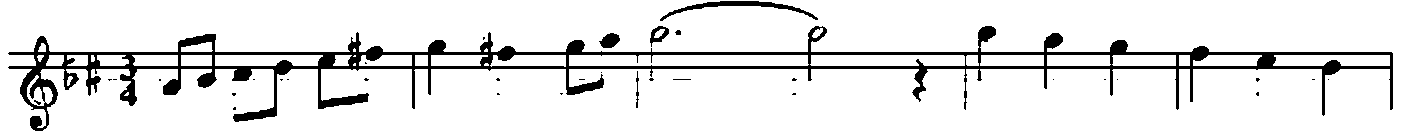
USÛLÜ SEMÂ

ŞARKILAR SÖYLE O SAHİLLERDE

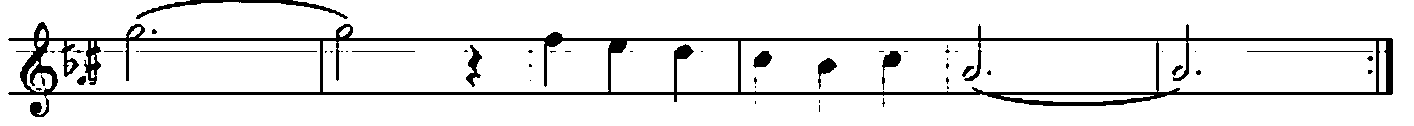
♩ = 192

SÜRE 3:30

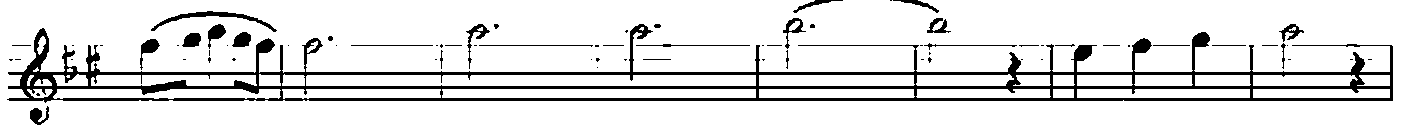
MÜZİK: AVNİ ANIL
SÖZ: YILMAZ YÜKSEL



ARANAĞME



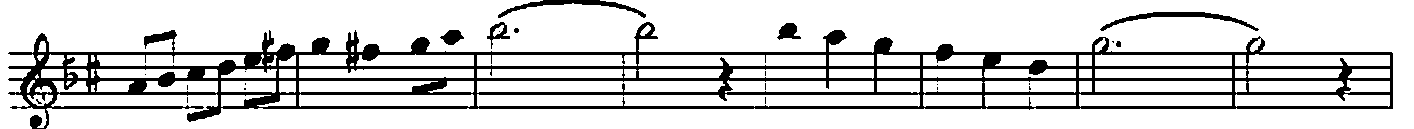
ŞAR KI LAR SÖY LE O SA HİL



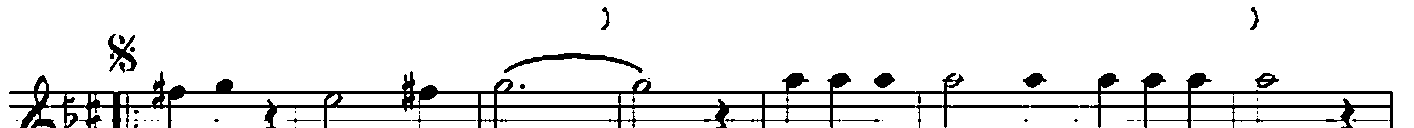
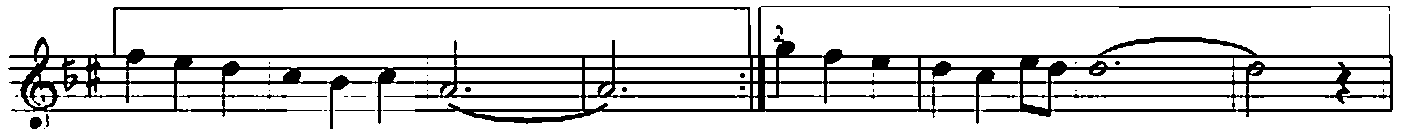
LER DE RÜZ GÂR LAR DA NA SEN DEN



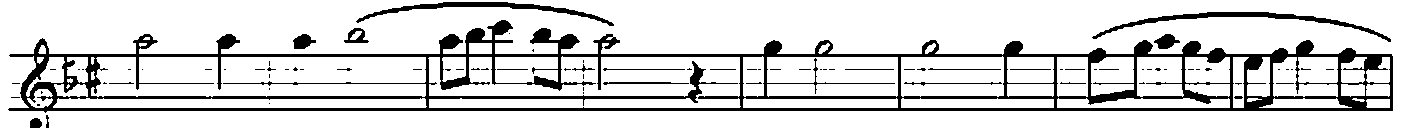
NAĞ ME LER GE TİR SİN



(SAZ



BI RAK KEN DI Nİ DE Nİ ZİN MÂ Vİ SULA RI NA



FR İ NA LAR SE Nİ OK ŞA YAN



DAL GA LAR GE TİR

SİN (SAZ) UÇUŞSUN ÜZERİNDE
 EN DA MI NI ZEVK LE SEY RE DEN
 BAH TI YAR MAR TI LAR (SAZ)
 SÖY LE BİR TÂ NE Sİ NE NE OLUR (SAZ) BANA SEN DEN
 SELÂMLAR GE TR SİN
 (SAZ)

ŞARKILAR SÖYLE O SAHİLLERDE RÜZGÂRLAR BANA SENDEN NÂĞMELER GETİRSİN
 BIRAK KENDİNİ DENİZİN MÂVİ SULARINA FIRTINALAR SENİ OKSAYAN DALGALAR GETİRSİN
 UÇUŞSUN ÜZERİNDE ENDÂMIN ZEVKLE SEYREDEN BAHTİYAR MARTILAR
 SÖYLE BİR TÂNEĞİNE NE OLUR BANA SENDEN SELÂMLAR GETİRSİN