

NİHAVEND FANTEZİ

(GÜLBAYAZ)

DÜYEK

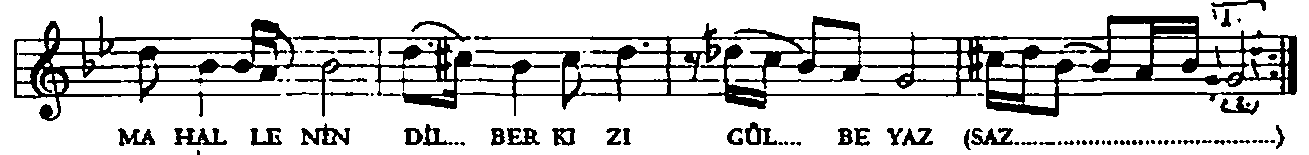
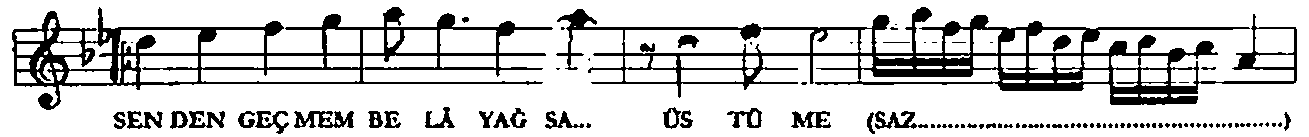
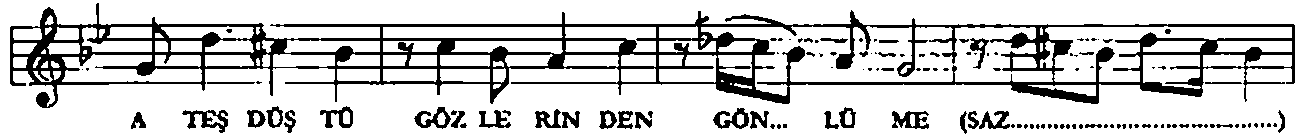
Ateş Düştü Gözlerinden Gönüme

MÜZİK : BİLGE ÖZGEN
SÖZ : YALÇIN BENLİCAN

$\text{♩} = 192$

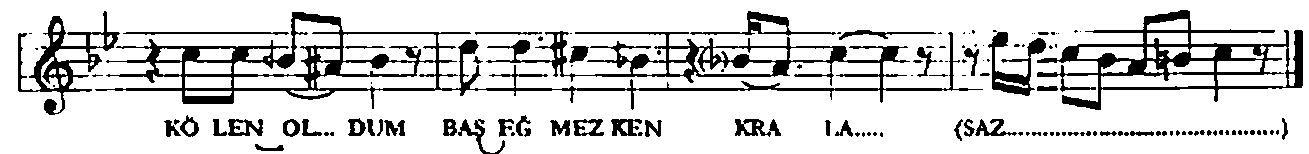
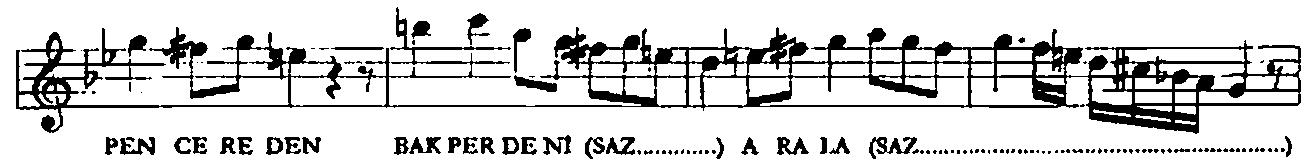


ARANAĞME



AKSAK

$\text{♩} = 224$

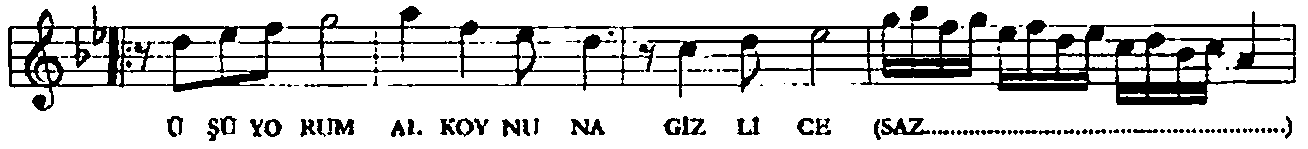
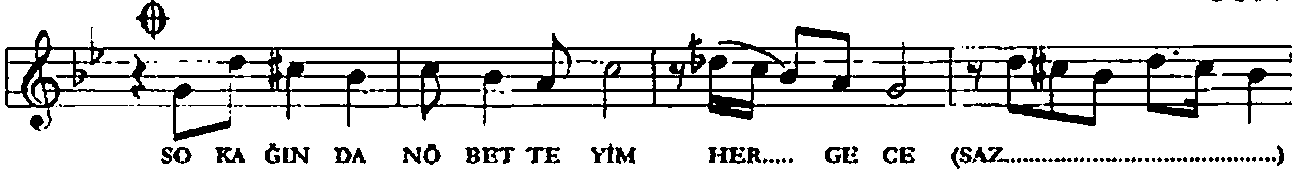


NIHAVEND FANTEZİ

(GÜLBAYAZ)

(2)

DÜYEK $\text{♩} = 192$



ATEŞ DÜŞTÜ GÖZLERİNDEN GÖNLÜME
YÖREĞİMDEN VURGUN YEDİM, TUTUŞTUM
SENDEN GEÇMEM BELÂ YAĞSA ÜSTÜME
MAHALLENİN DİLBER KIZI GÜLBAYAZ

PENCEREDEN BAK, PERDENİ ARALA
GÜLÜCÜKLER, ÖPÜCÜKLER SIRALA
KÖLEN OLDUM, BAŞ EĞMEZKEN KRALA
MAHALLENİN DİLBER KIZI GÜLBAYAZ

SOKAĞINDA NÖBETTEYİM HER GECE
YİNE YAĞMUR ÇİSELİYOR İPİNCE
ÜŞÜYÜRÜM, AL KOYNUNA GİZLİCE
MAHALLENİN DİLBER KIZI GÜLBAYAZ

YALÇIN BENLİCAN