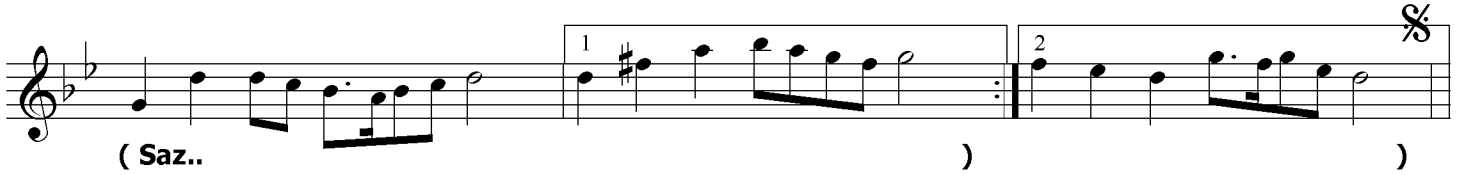
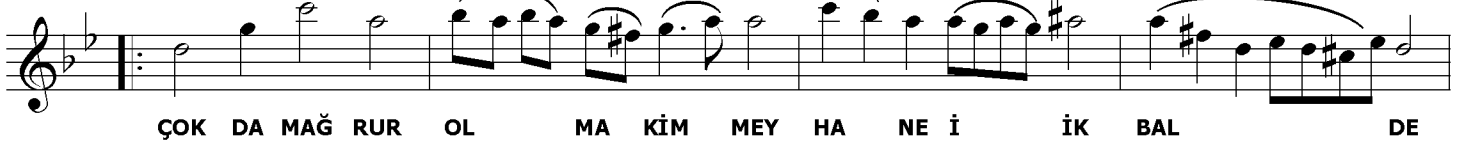
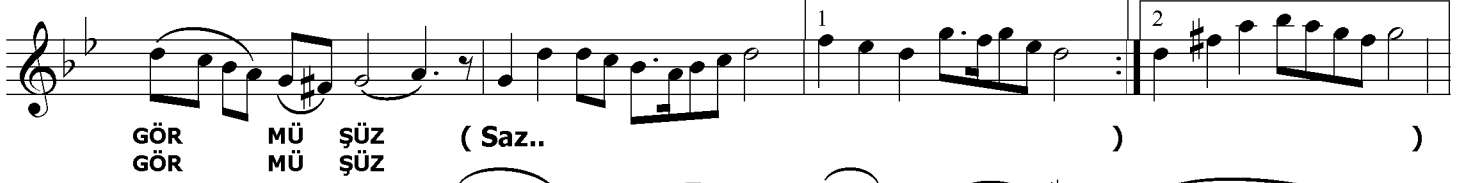
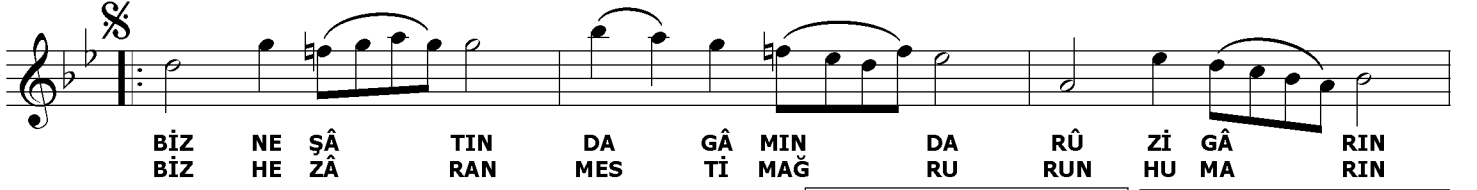
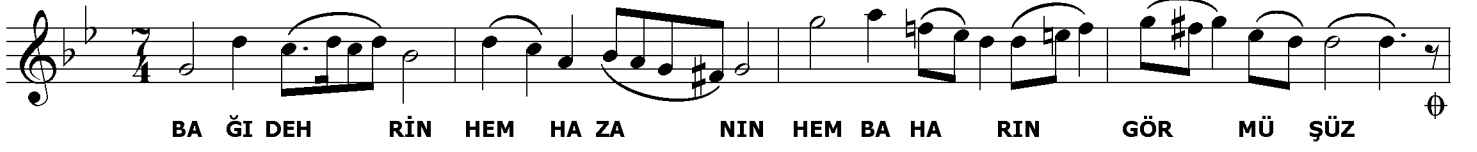


NİHAVEND ŞARKI

BAĞ-I DEHRİN HEM HAZANIN HEM BAHARIN GÖRMÜŞÜZ

USÛLÜ : DEVR-İ HİNDİ

MÜZİK : KAYA BAKAT
SÖZ : NÂBİ



BAĞ-I DEHR-İN HEM HAZANIN, HEM BAHARIN GÖRMÜŞÜZ
BİZ NEŞÂTIN DA GÂMIN DA RÛZİGÂRIN GÖRMÜŞÜZ
ÇOK DA MAĞRUR OLMA KİM MEYHANE-İ İKBÂLDE

NÂBİ (1642-1712)