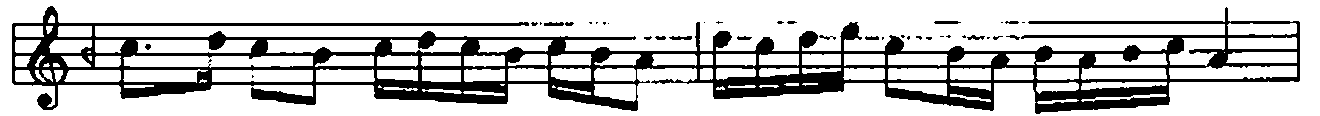


USÛL: HAFIF
Birinci Hane

NEVRUZ PEŞREV

BESTE: TANBURI YAHYA ÇELEBİ



Mülâzime 



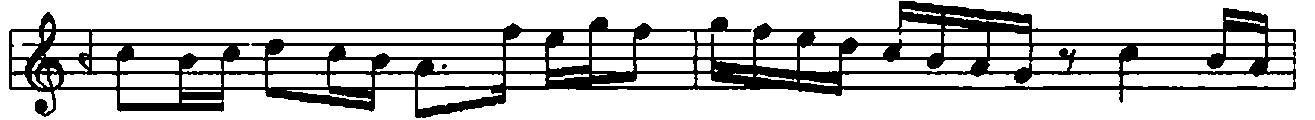
SON

İkinci Hane

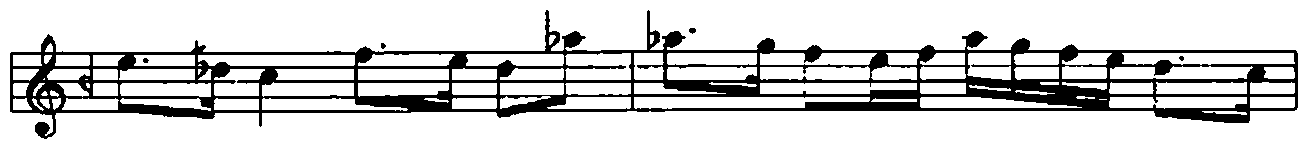
The second hane consists of eight staves of music. The notation is written in a single treble clef with a key signature of one flat (B-flat) and a common time signature (C). The music is a continuous melodic line with various rhythmic values, including eighth and sixteenth notes, and rests. The eighth staff concludes with a double bar line and a repeat sign.

Üçüncü Hane

The third hane consists of four staves of music. The notation is written in a single treble clef with a key signature of one flat (B-flat) and a common time signature (C). The music is a continuous melodic line with various rhythmic values, including eighth and sixteenth notes, and rests. The fourth staff concludes with a double bar line.



Dördüncü Hane



Bu eser TRT Müzik Dairesi Arşivi' nden alınmıştır.