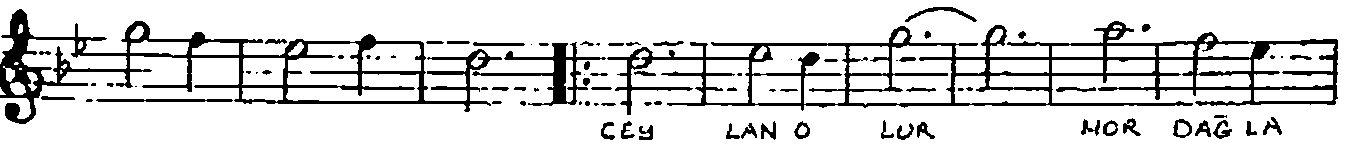
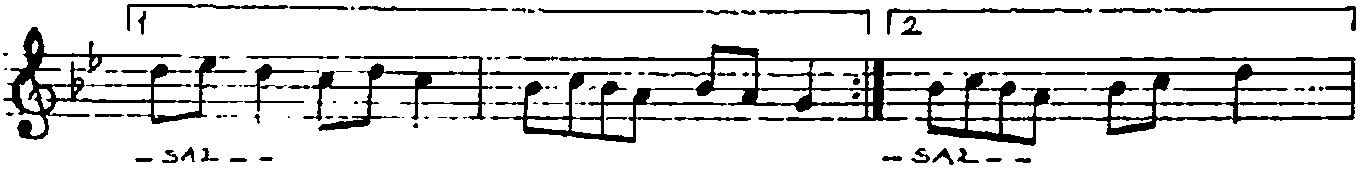
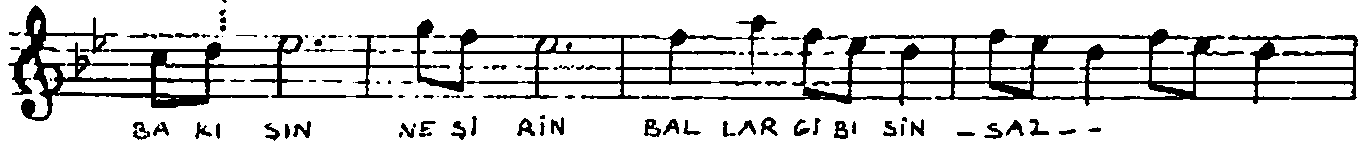
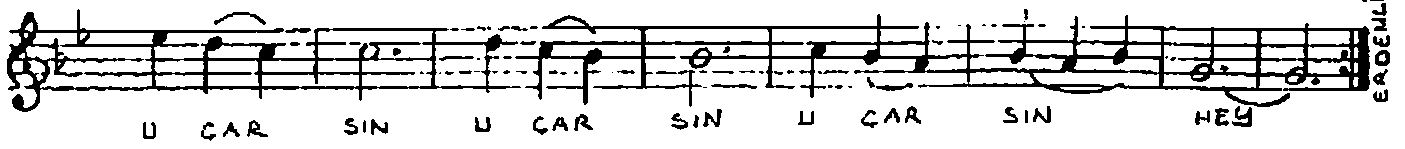


NİHÂVEND ŞARKI
-GÜLÜŞÜN NE GÜZEL, GÜLLER GİBİSİN-

SOFYAN: ♩ 120
SEHÂT: ♩ = 336
USÛLÜ: SOFYAN-SEHÂT

MÜZİK: UMİT ÂŞİK
SÖZ : ERDOĞAN ERSAN





GÜLÜŞÜN NE GÜZEL GÜLLER GİBİSİN
BAKIŞIN NE ŞİRİN BALLAR GİBİSİN
SEVMEK İSTEDİNCE ELİLER GİBİSİN

CEYLAN OLUR MOR DAĞLARA KAÇARSIN HEY
TURNA OLUR YÜKSEKLERDEN UÇARSIN HEY.