

NIHÁVEND ŞARKI

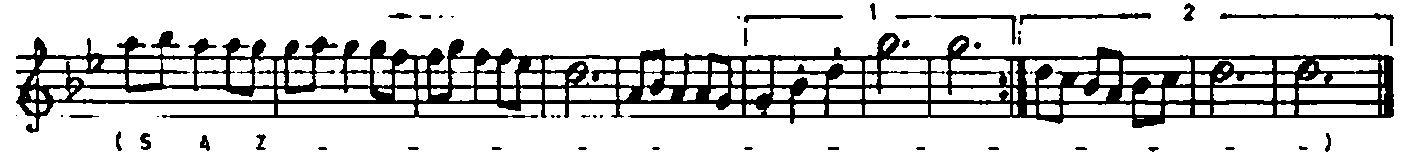
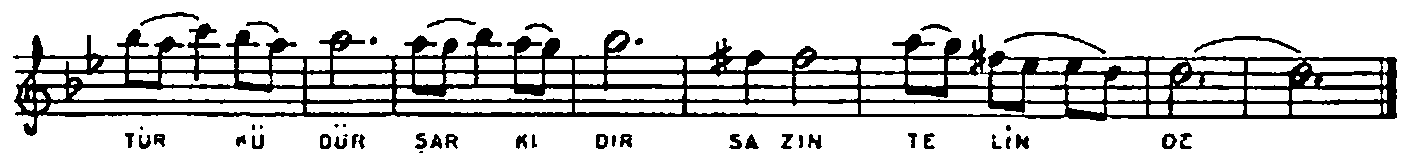
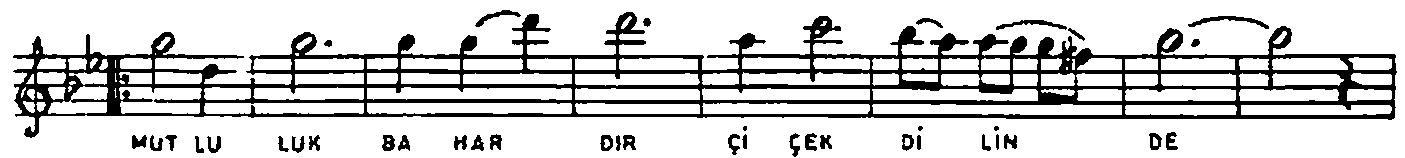
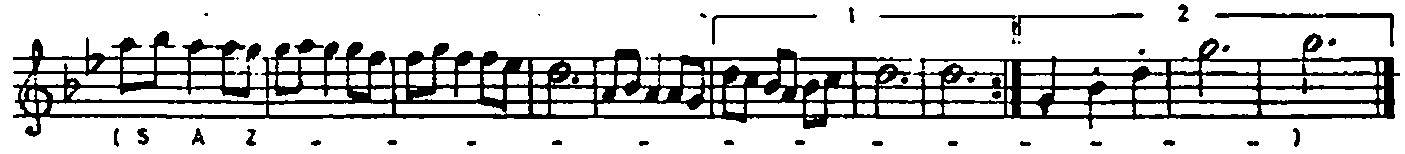
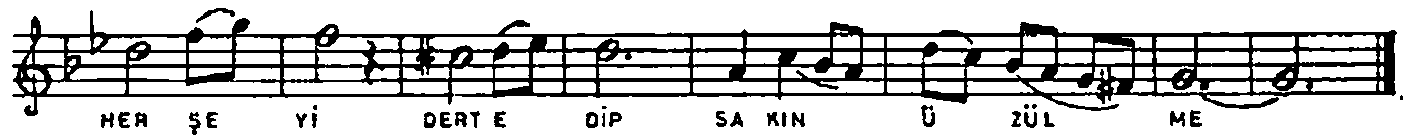
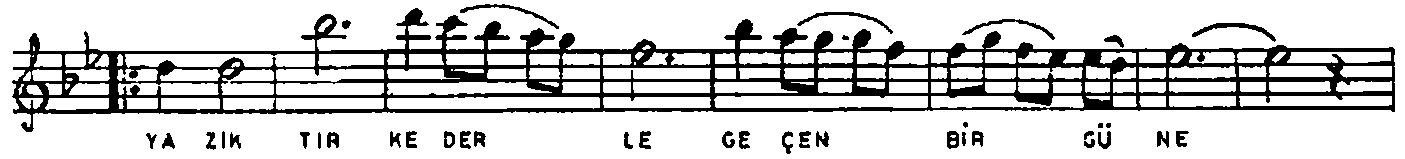
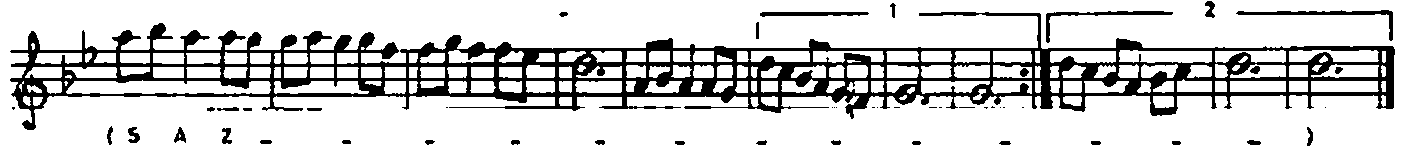
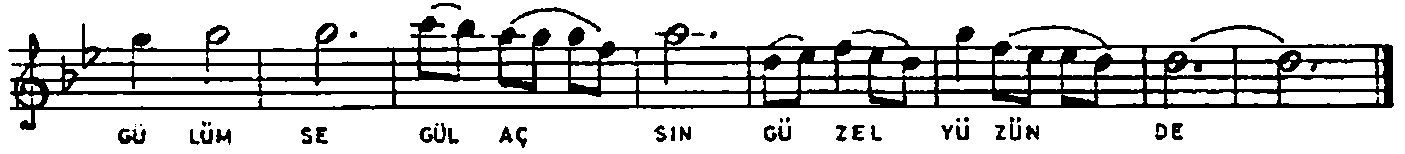
BESTE : BURHAN DURUCU

SÖZ : YALÇIN BENLİCAN

USULÜ : SEMAİ

♩ : 138

Eğilim, işin ne senin hücumla



NİHAVEND ŞARKI
(2)



EDALIM İŞİN NE SENİN HÜZÜNLE
GÜLÜMSE GÜL AÇSIN GÜZEL YÜZÜNDE
YAZIATIR KEDERLE GEÇEN BİR GÜNE
HER ŞEYİ DERT EDİP SAKIN ÜZÜLME

MUTLULUK BAKARDIR ÇİÇEK DİLİNDE
TÜRKÜDÜR ŞARKIDIR SAZIN TELİNDE
KEDER DE NEŞ'E DE SENİN ELİNDE
HER ŞEYİ DERT EDİP SAKIN ÜZÜLME