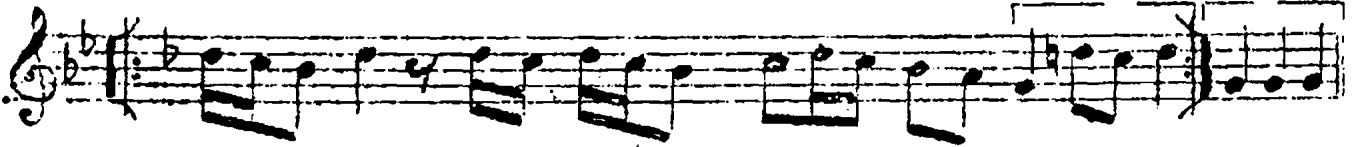


S

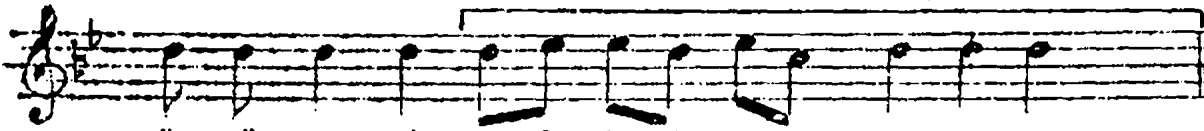
A

Z



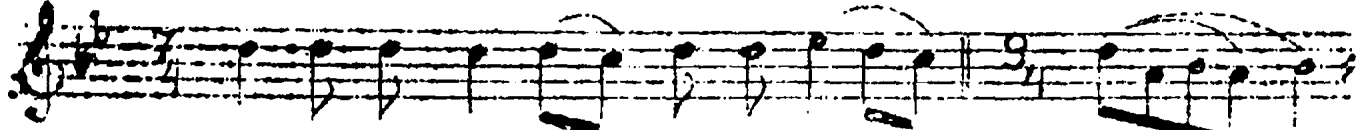
Ev le ri ni..... n

Mev lâm se ni.....



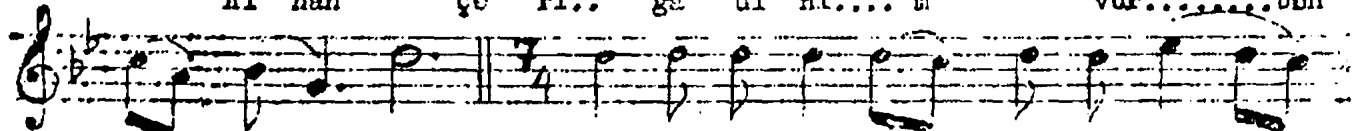
ö nü mer sin - S A Z

Ba na ver sin



Ah su lar iç mez ga da na.... m to..... r

Al han çe ri.. ga di na.... m vur..... ben



sin ter . sin Ah su lar ak maz bi da no..... m

ö lo.... yim Ah ga pa nız da bi da no..... m



tor..... sin ter... sin

kul..... ben o... la.... yim.

Evlerrinin önü mersin
 Ah sular akmaz gadinam tersin, tersin
 Mevlâm seni bana versin
 Al hançeri gadinam vur ben bleyim
 Ah Capınızda kul ben olayım

Evlerrinin önü susam
 Ah su bulsam da gadinam çovremi
 Aşsam yüzünü baksam dursam
 Al hançeri.....