

NIHÂVEND ŞARKI
EY İPEK KANATLI SEHER RUZGARİ:

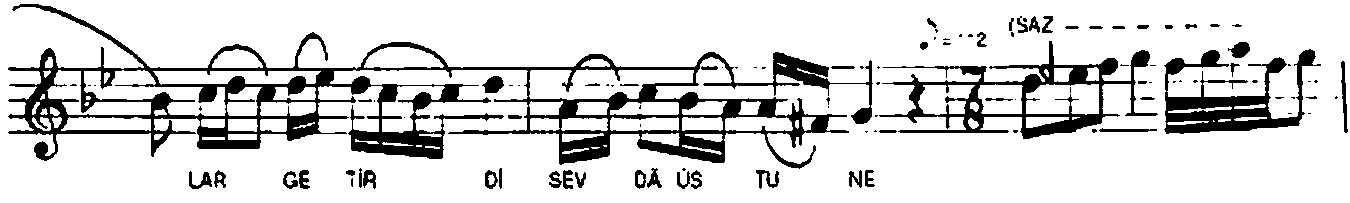
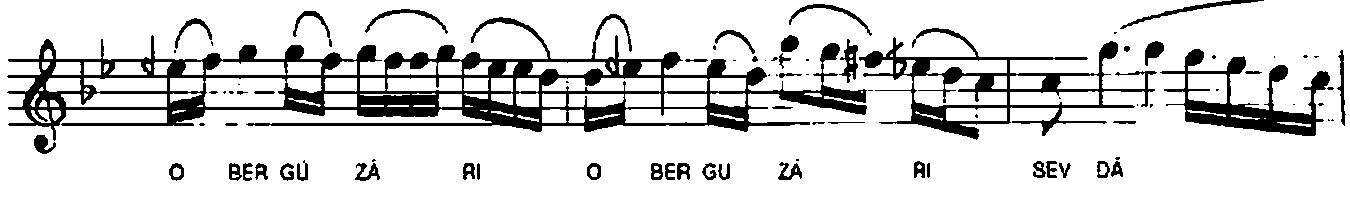
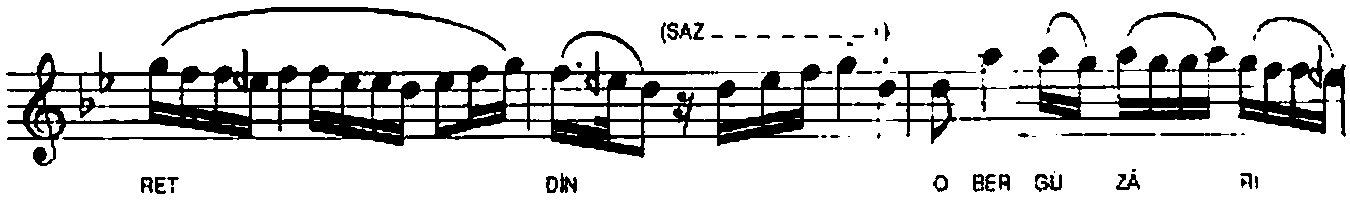
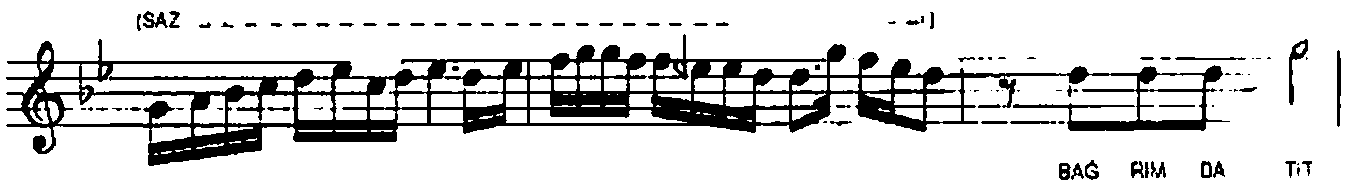
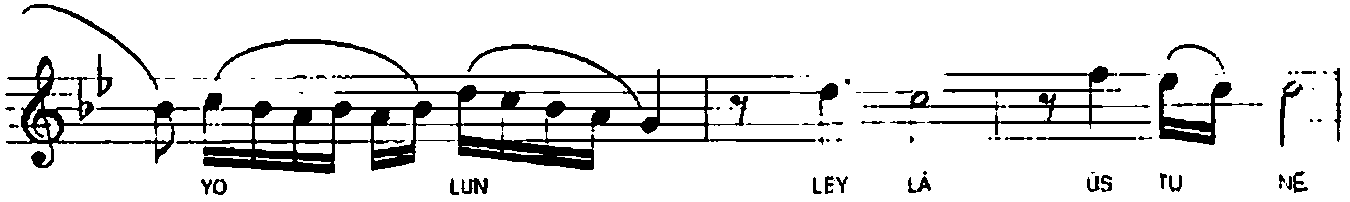
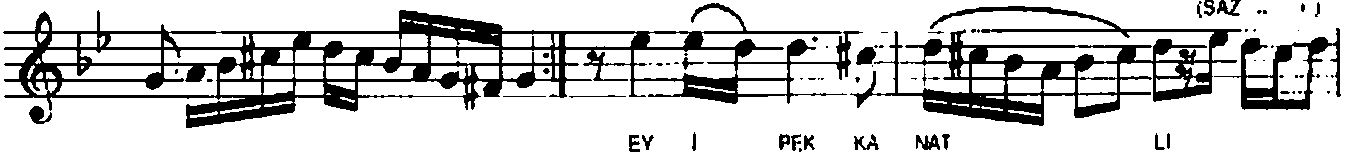
USÛLÜ : DÜYEK-DEVİR-İ HİNDİ

MÜZİK : Sadeddin KAYNAK

SÖZ : Vecdî BİNGÖL

$\text{♩} = 160$

ARANAGME



NİHÂVEND ŞARKI
EY İPEK KANATLI SEHER RÜZGÂRI

- 2 -

SE VİŞ ME MİZ NE HOŞ ÇAĞ DI YIL DİZ Gİ Bİ

BİR DEN AĞ DI A CI BİR GÖZ YA ŞI YAG DI

O PEM BE RÜ YÂ US TU NE ŞİM Dİ O ÇAĞ

LAR YÂ DIM DA AĞ LAR GON LU MU BAĞ

LAR HUL YÂ US -L İİE (SON)

gencül

EY İPEK KANATLI SEHER RÜZGÂRI
UGRADI MI YOLUN LEYLÂ USTUNE
BAĞRIMDA TITRETTİN O BERGUZÂRI
SEVDALAR GETİRDİ SEVDÂ USTUNE

SEVİŞMEMİZ NE HOŞ ÇAĞDI
YILDIZ GİBİ BİRDEN AĞDI
ACI BİR GÖZYAŞI YAGDI
O PEMBE RUYA USTUNE

SİMDİ O ÇAĞLAR
YÂDIMDA AĞLAR
GONLÜNÜ BAĞLAR
HÜLYA USTUNE