


NIHÄVEND ŞARKI

Şemâî

Tanbûrî Ali Efendi



Ey le di mey siz bu seb



uş şa ki zâ rû




nes' ve yâb yâb



Bir ta raf tan rû yi dil



ber bir ta raf tan



mâ hi tâb Bir ta raf

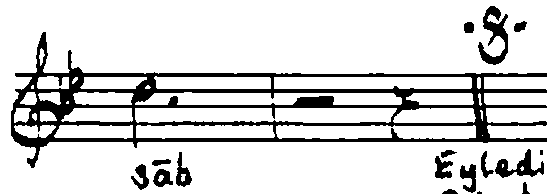
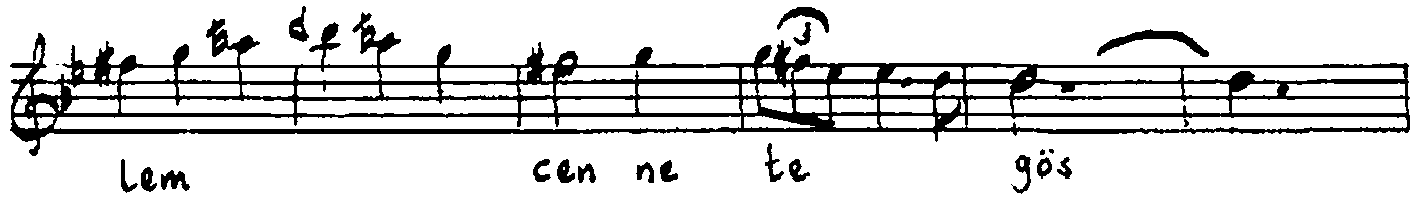
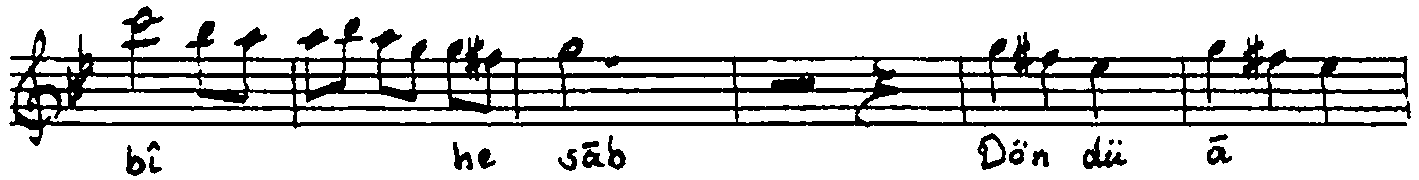
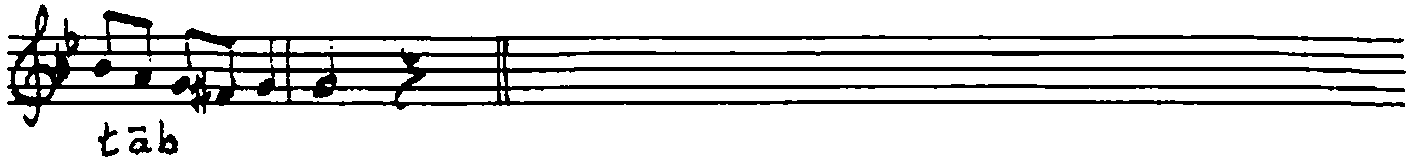


tan rû yi dil ber



bir ta raf tan mâ hi

NIHÄVEND SARKI (Dwaml)



Eyledi meysiz bu seb ussâk-ı zârı neş'veyâb
Bir taraftan rûy-i dilber bir taraftan mâhitâb
Döndü âlem cennete gösterdi nûru bî-hesâb
Bir taraftan rûy-i dilber bir taraftan mâhitâb

Df-193/266-65

Muallim İsmail Hakkı Beyin TRT. deki koleksiyondan yazıldı. *Püney/Kosad*