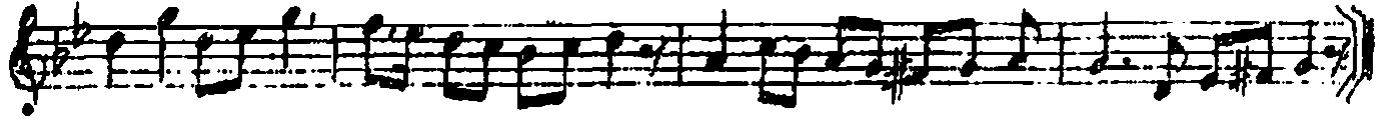


NIHAVEND ŞARKI

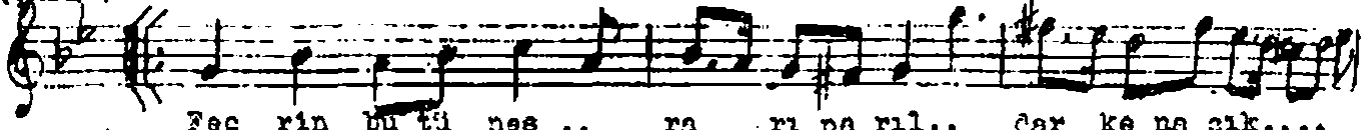
Beste: Ahmed Aksoy

Arsak - Cuzound

Güfte: Mustafa Nafiz Iruak



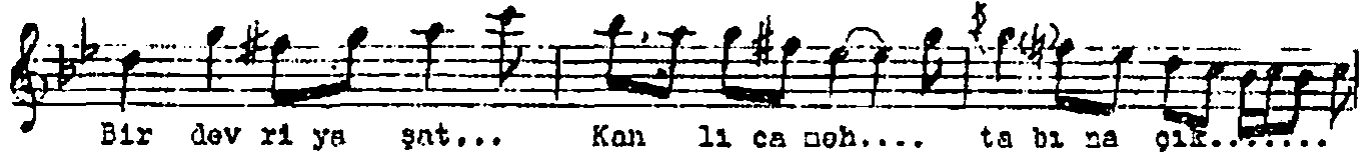
(Sarkı) ..



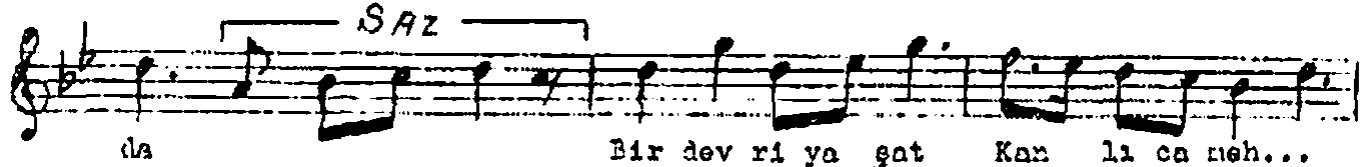
Fec rin bu tü nes .. ra ri pa ril.. çar ke na çık....



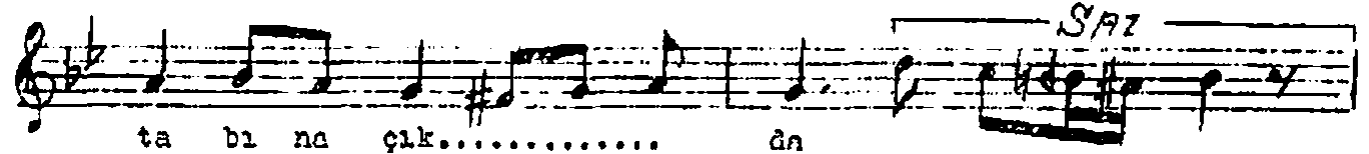
da da



Bir dev ri ya şat... Kan li ca meh.... ta bi na çık.....



da Bir dev ri ya şat Kan li ca meh...



ta bi na çık..... da

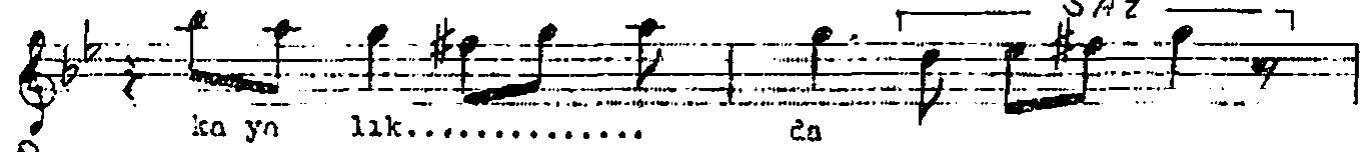
(Meyan)



Kör fez de ne ses var ne de bir çit ka ya lık.....



da Kör fez de ne ses var ne de bir çit

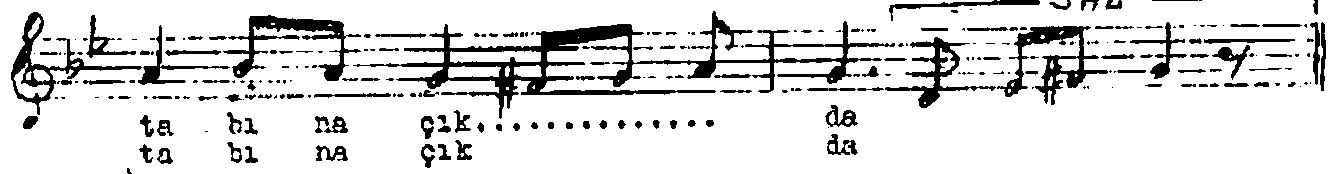


ka ya lık..... da

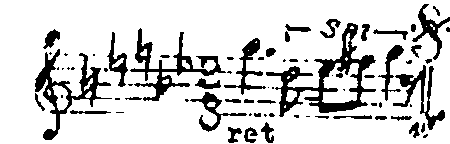
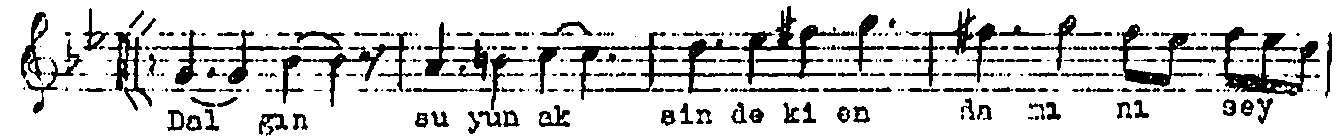
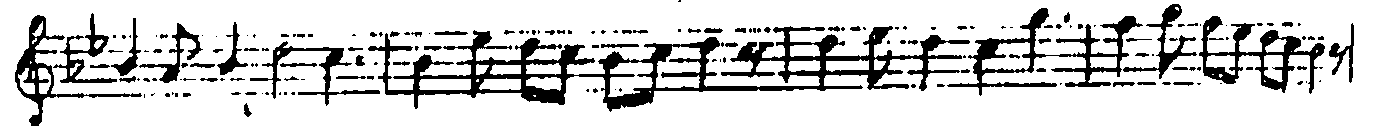
(Nakarat)



Mâ zi ye bü rün... Kan li ca meh ta bi na çık.....  
Her dev ri ya şat Kan li ca meh ta bi na çık



(Curcuna) (Aranâğnesi)



Fecrin bütün serâri parıldarken açıksa  
Bir devri yaşat Kanlıca mehtâbına çık da  
Körfez'de ne ses var ne de bir şit kayalıkda  
Mâziye bürün Kanlıca mehtâbına çık da

Dalğın suyun aksindeki endâmını seyret  
Karşında solan bir günün akşamını seyret  
Aşıkların koyda serencâmını seyret  
Her devri yaşat Kanlıca mehtâbına çık da...