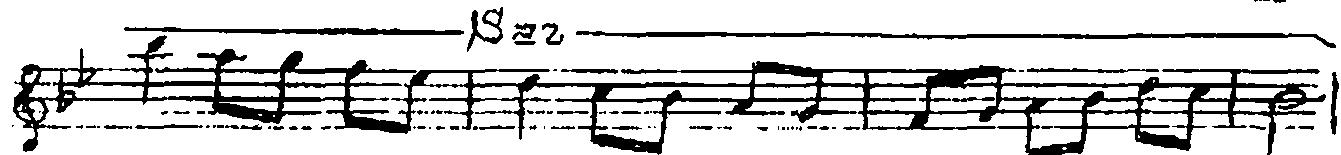
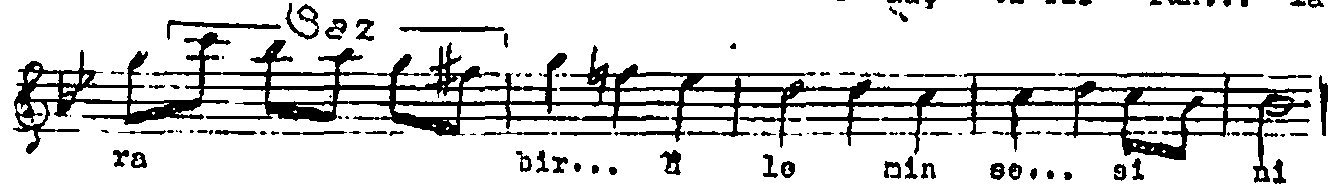
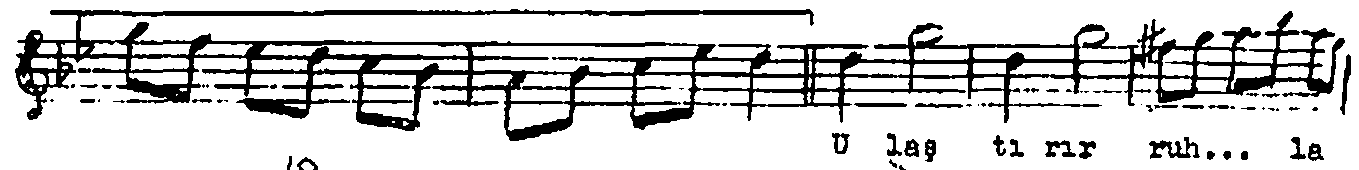
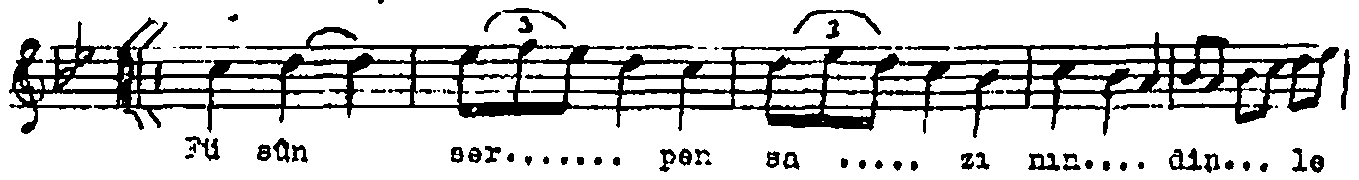


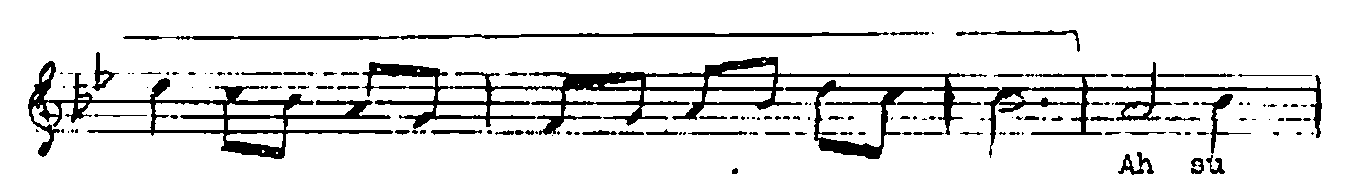
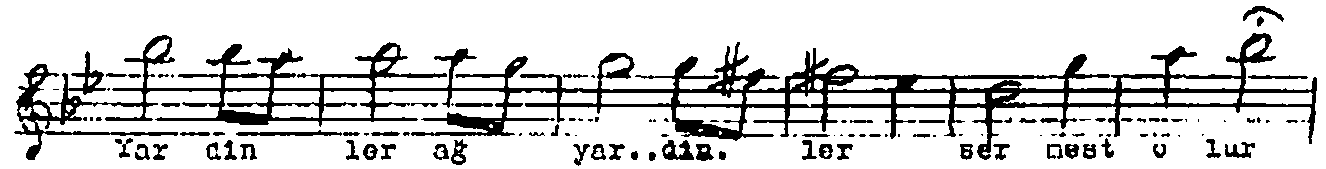
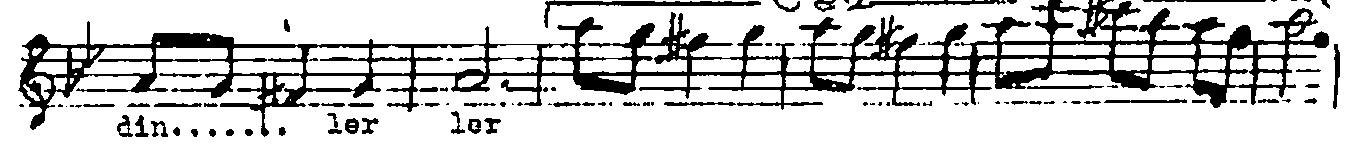
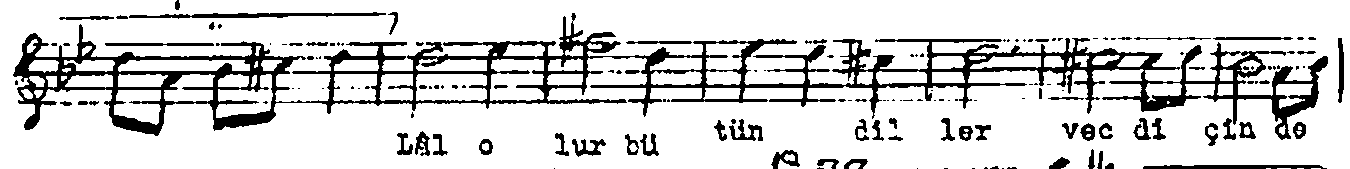
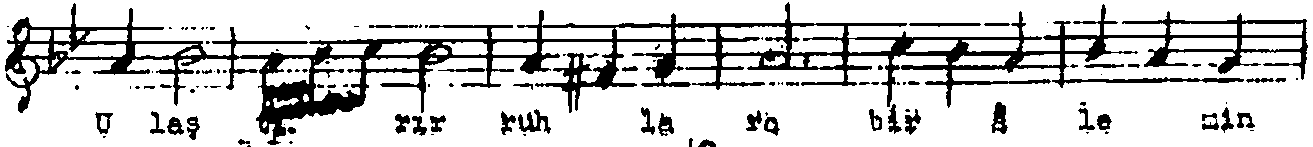
NIHAVEND ŞARKI

Beste: Dr. Alâeddin Yavaşca
Güfte: Orhan Tokmakoglu

Semâi

(Aranâğmesi)





Müsn serpen sâzınır dinlesen nağmesini
 Ulaştırır ruhlara bir şlemin sesini
 Lâî olur bütün diller vecd içinde dinlerler
 Yar diler ağyar diler sermest olur gönüller
 Ah susar bez-i canda, can dinler cânân diler.