

DÜYEK

SÜRE : 425

# NIHÂVEND ŞARKI

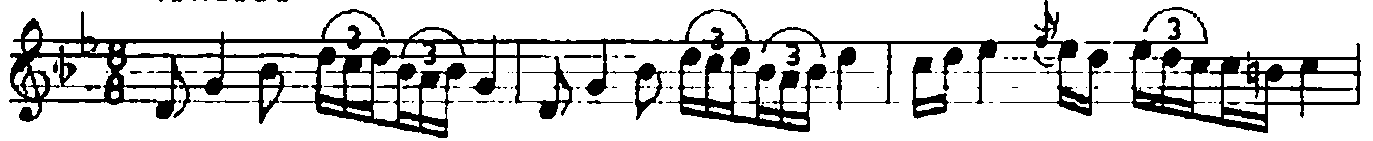
MÜZİK : ÂMİR ATEŞ

SÖZ : G. HAMZA BERKAY

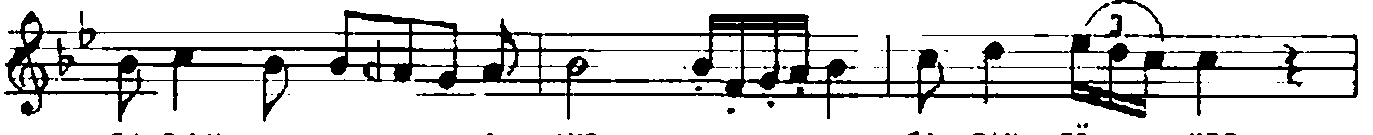
GECELER BÖYLE KALMAZ YA, ŞAFAK SÖKER SABAH OLUR

♩ : 180

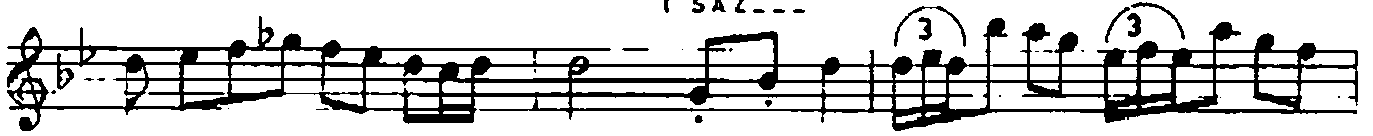
ISAZ---



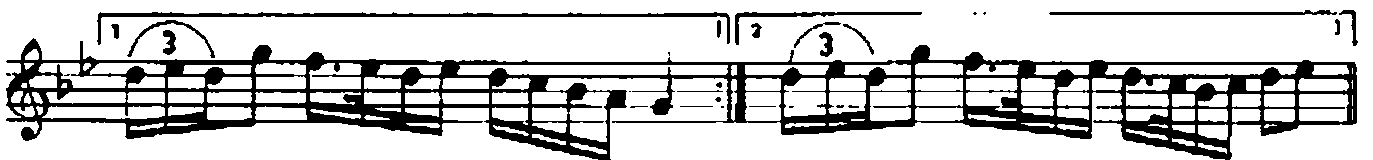
GE-CE-LE-R BÖY- LE KAL- MAZ YA- ŞA-FAK SÖ- KER



SA-BAH O LUR ISAZ--- ŞA-FAK SÖ- KER



SA-BAH O- LUR



AY- RI- LAN YO- LUN SO- NUN- DA DU- DAK LAR- DA  
HAS- RE- TIN A- LEV İ- ÇİM- DE YE- TER ÜZ- ME



BİR AH O- LUR  
GÜ- NAH O- LUR

DU- DAK- LAR- DA  
YE- TER ÜZ- ME

