

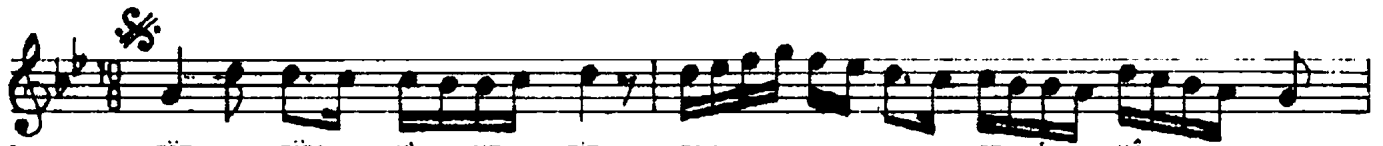
AKSAK SEMÂİ

NIHÂVEND AĞIR SEMÂİ

SÜRE : 4', 28"

Gördüm yine bir gonce_i nâdîde_edâyı,

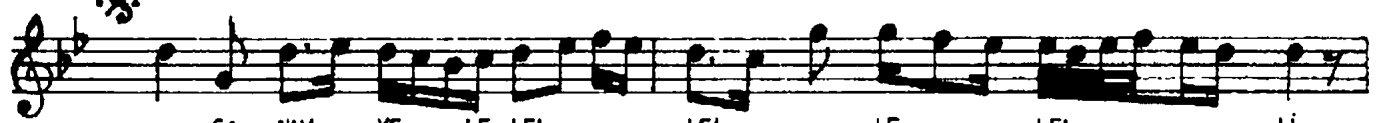
♩ = 108



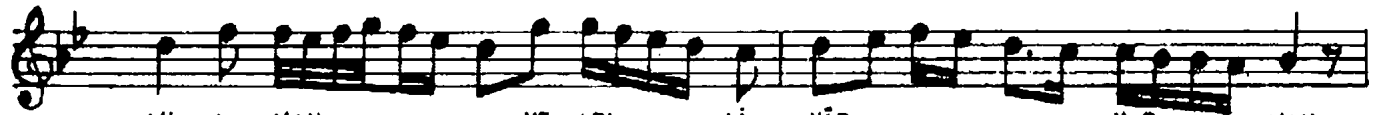
1. GÖR - DÜM Yİ - NE BİR GON - CE - İ NÂ -
2. KİL - MIŞ TU - RA - ↑ ZÜL - FÜ - NE DİL -
4. SEV - DİM O GÜ - Lİ Â - Lİ HE - ZÂR



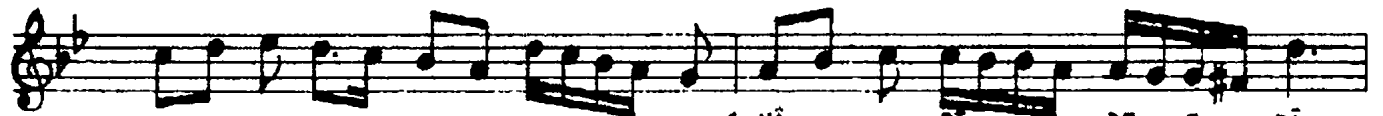
1. Dİ - DE E - DÂ - Yİ A - MAN EY
2. BES - TE E - DÂ - Yİ
4. S - VE NÜ - MÂ - Yİ



CA - NİM YE LE LEL LEL LE LEL Lİ



AH A - MAN YE LEL Lİ YÂR YAR A - MAN



YE LE LE LEL LE Lİ VAY

1. NÂ - Dİ - DE E - DÂ -
2. DİL - BES - TE E - DÂ -
3. MÂ - NEN - DE - İ - BÜL -
4. İŞ - VE NÜ - MÂ -



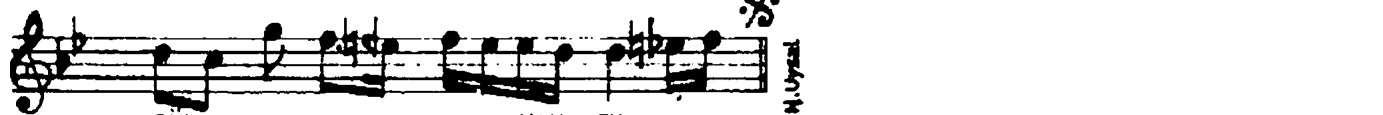
1. Yİ YAR A - MAN HEY CA - NİM
2. BÜL



HEY CA - NİM ZAN - NET - ME TE - Hİ



NA - LE - Mİ MÂ - NEN - DE - İ BÜL -



BÜL A - MAN EY

1. GÖRDÜM YİNE BİR GONCE_İ NÂDİDE_EDÂYI.
2. KILMIŞ TURA_İ ZÜLFÜNE DİL_BESTE EDÂYI.
3. ZANN ETME TEHİ NÂLEMİ MÂNENDE_İ BÜLBÜL.
4. SEVDİM O GÜL_İ ÂL_İ HEZÂR İŞVE_NUMÂYI.

VEZNI : Mef'ûlü mefâilü mefâilü faûlün