


mai - de ğışmeli

'20°

) 152 

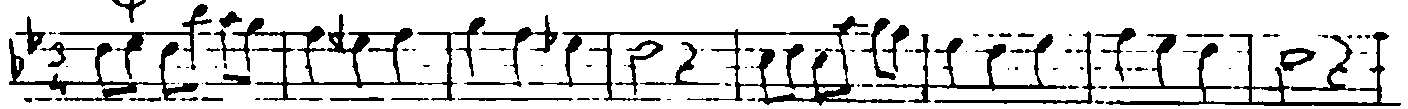
# NIHÄVENT SÄRKI

- Gözlerime çöken aksam gibisin -

= AŞIĞIM SANA =

Söz : Ayşe Pekin

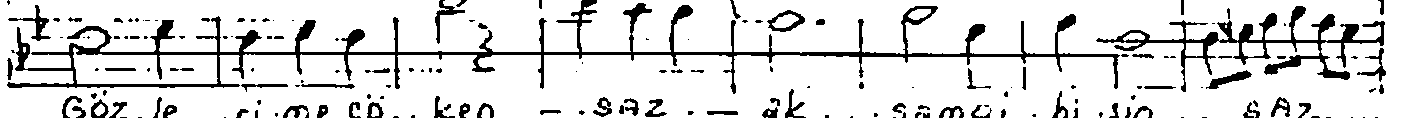
Müzik : Alâeddin Şensoy



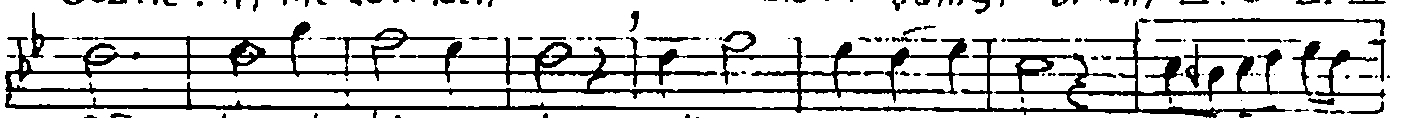
GİRİŞ SAZI



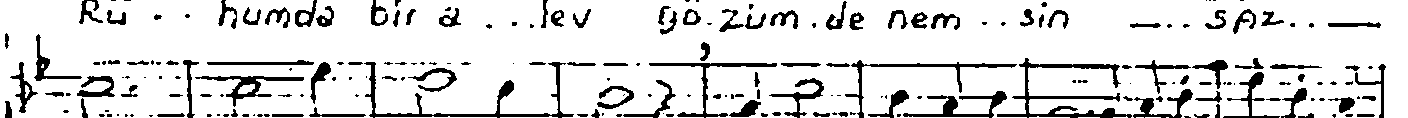
Göz . le . . ri . me çö . ken — SAZ — ak . . şam gi . . bi . sin — SAZ —



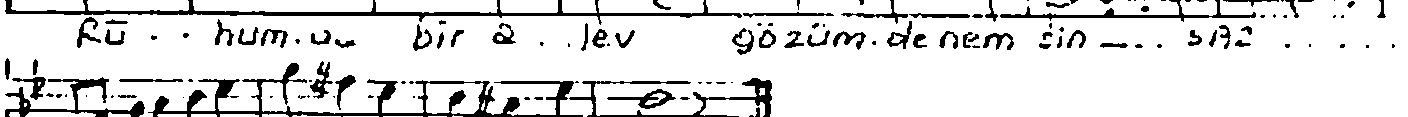
Göz . le . . ri . me çö . ken — SAZ — ak . . şam gi . . bi . sin — SAZ —



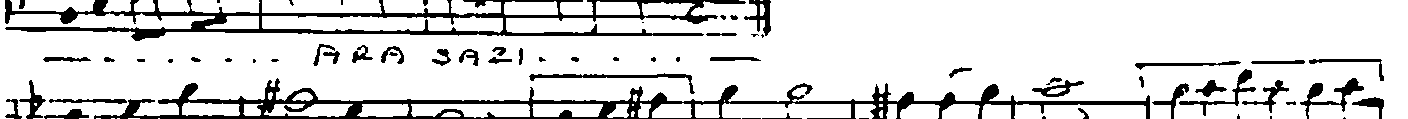
Rü . . hum da bir a . . lev gözüm . de nem . . sin — SAZ —



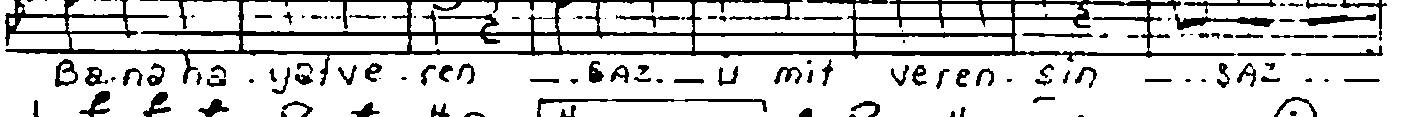
Rü . . hum . u . bir a . . lev gözüm . de nem sin — SAZ —



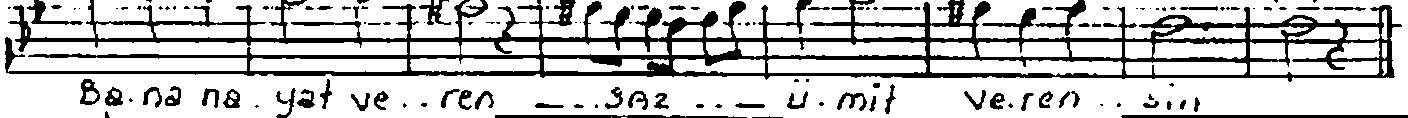
ARA SAZI



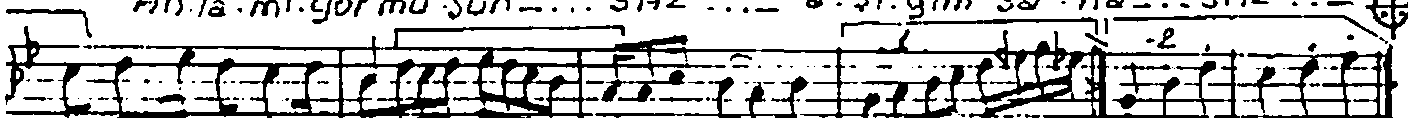
Ba . na ha . yat ve . ren — SAZ — ü mit ve ren . sin — SAZ —



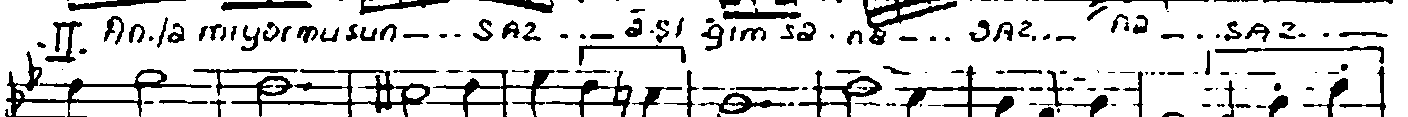
Ba . na na . yat ve . ren — SAZ — ü . mit ve ren . sin



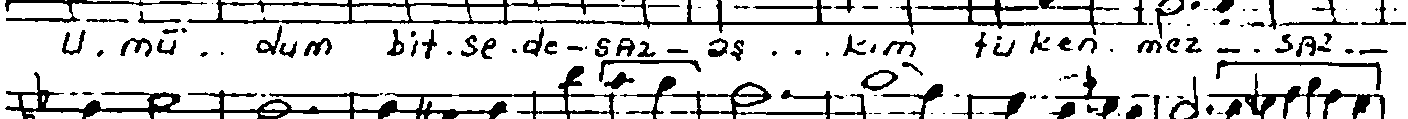
An . la . mi . yor mu şun — SAZ — a . şı . ğım sa . na — SAZ —



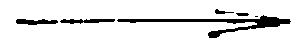
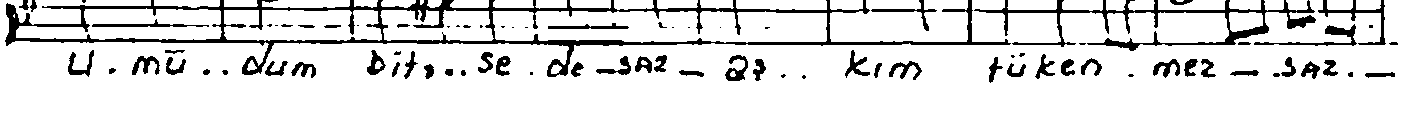
II. An . la mi yor musun — SAZ — a . şı . ğım sa . na — SAZ — na — SAZ —



U . mü . . dum bit . se . de — SAZ — a ş . . kim tü ken . mez — SAZ —



U . mü . . dum bit . se . de — SAZ — a ş . . kim tü ken . mez — SAZ —



Söhîye: - 2 -

Kar. . şim.da hayâ . . lin bir lâh.za git . mez - SAZ. -

Kar. . şim.da hayâ . . lin bir lâh.za git . . mez - SAZ -

se ni an . . . lâ.t.ma.ya . . SAZ. - şu öm . . rüm yet . . . mez - SAZ. -

se ni an . . . lâ.t.ma . . ya . . SAZ. - şu öm . . rüm yet . . . mez

An.la.mı.yor mu.sun . . . SAZ . . . â . . şî . ğim sa . . nâ . . . SAZ . . .

An.la.mı.yor mu.sun . . SAZ . . . â . . şî . ğim sa . . nâ . . . SAZ . . .

â . . şî . ğim sa . . nâ

**SON**

.I.

Gözlerime çöken akşam gibisin.  
Rûhumda bir alev, gözümde nemsin.  
Bana hayat veren, ümit verensin.  
Anlamıyamusun, âşîğim sana.

II.

Umûdum bitsede; aşkim tükenmez.  
Karşımda hayâlin, bir lâhza gitmez.  
Seni anlatmaya, şu ömrüm yetmez.  
Anlamıyormusun, âşîğim sana.

Nylâ Fekri