

# NIHÂVEND

## Gülünce Güzelsin

Usûl: Curcuna-Düyek

Beste: Avni ANIL

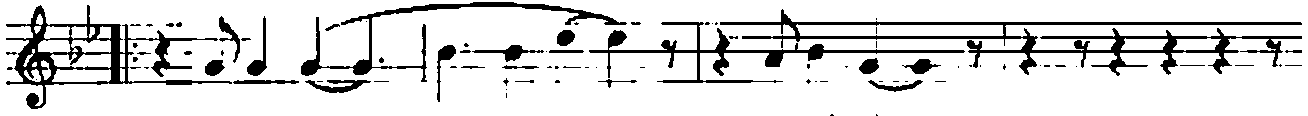
Güfte: M. Sâmî AŞAR



Aranâgme

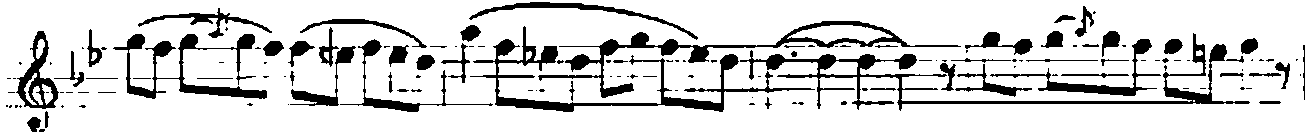


Pic.



Gü lün ce

gü zel sin



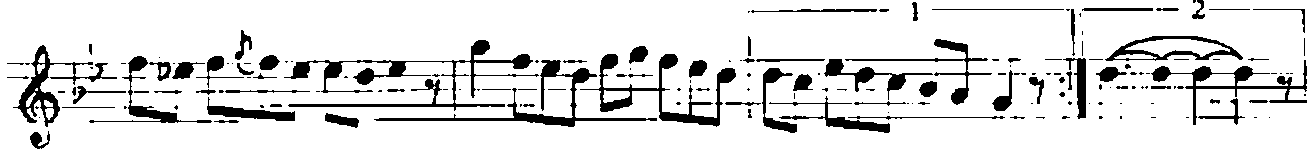
ağ

lar

ken

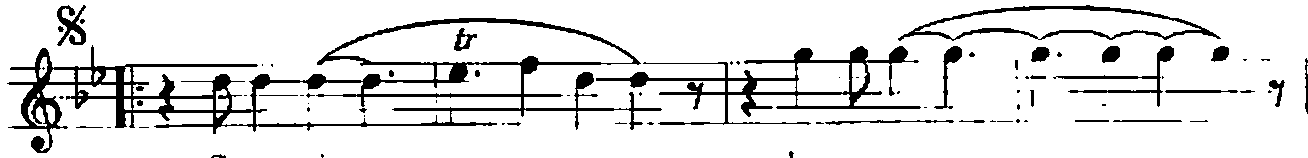
gü zel

Arasazı



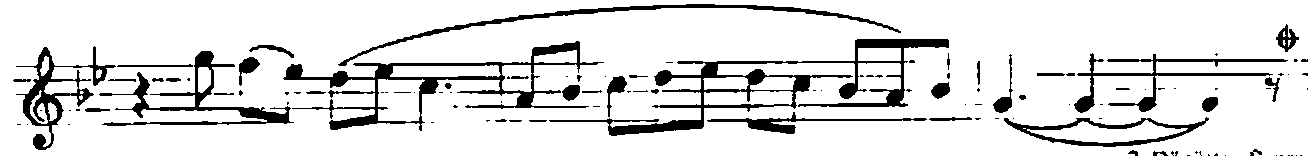
Zemine

Nakarata



Ge ce nin

koy nu na



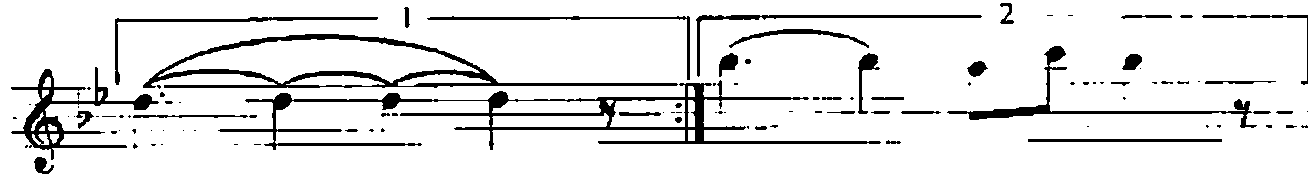
ya tar ken

gü zel

2. Dönüşten Sonra  
Esri DÜYEK'le  
Sona Ercek



Arasazı

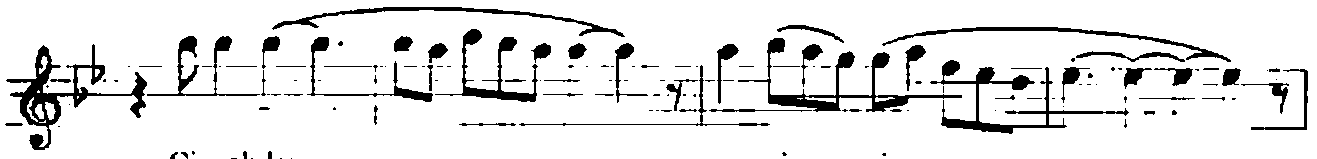


Nakarata

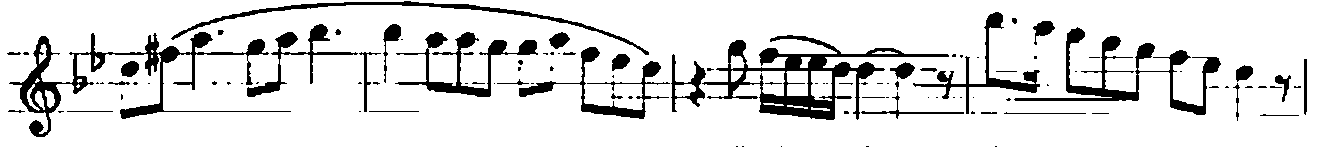
Meyâna

NIHÂVEND  
Gülünce Güzelsin

2



Çi çek ler mev sim siz.



a çar yü zün de Saz



Uy ku dan sıy rı lıp



kal kar ken gü zel Arasazı-Nakarata



Nakarata Dönüş

Eserin Finalı

Düyek-Ağırca ♩ = 128



Arasazı Pic.



Bir gün ö le cek sin am ma Saz en gü zel SON

Gülünce güzelsin, ağlarken güzel  
Gecenin koynuna yatarken güzel  
Çiçekler mevsimsiz açar yüzünde  
Uykudan sıyrılıp kalkarken güzel  
Bir gün öleceksin amma... en güzel