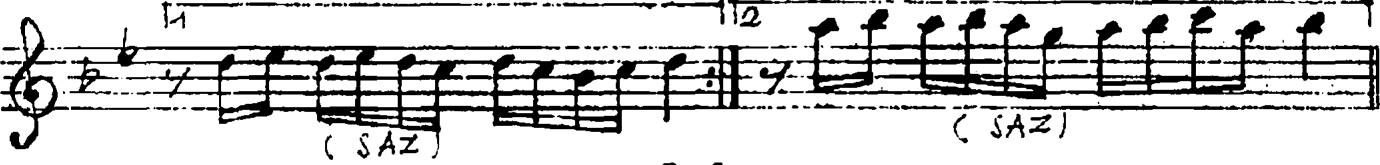
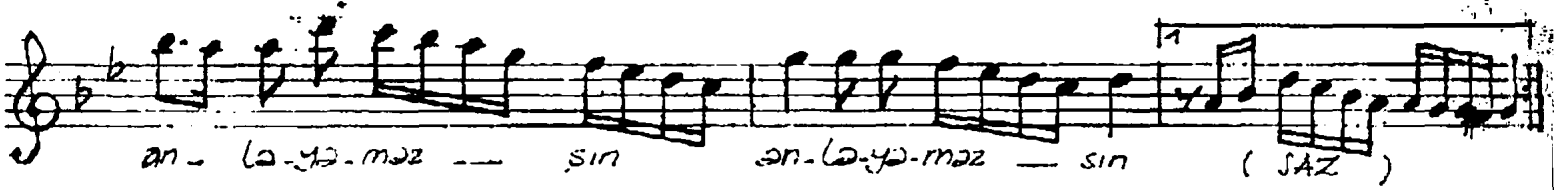
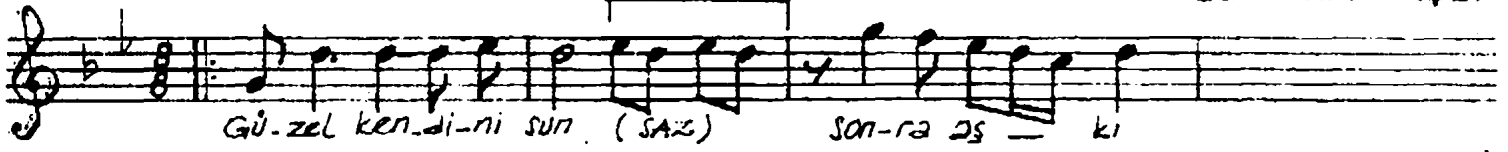


NIHAVEND SARKI
(GÜZEL KENDİNİ SUN)

BESTE-GÜFTE
DR. SELAHADDİN İÇLİ

DÜYEK



Güzel kendini sun, sonra askı anlayamazsın
Sâhte gururla askin sırrını anlayamazsın
İşyan ediyor, feryâd ediyor zulmünle gönül
Sâde füsûnla askin sıhcinı anlayamazsın