

# NIHÂVEND

## Her Seher Gonceler Açıkça

Usûl: Düyek

$\text{♩} = 144$

Beste: Avni ANIL

Güfte: H. Şinasi ÖNOL



Her se her

gon ce ler

aç tık ca



so lan

gül dö kü

lür

Arasazı



Zemîne

Nakarata



Es ki sev

dâ

ya ra sın dan



ye ni bir

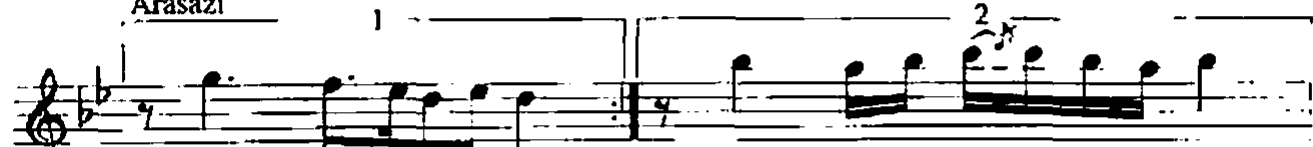
aşk gö rü

SON

nür



Arasazı



Nakarata

Meyâna



Dost e lin

den

ki mi has ret



ki mi vus lat

tan ô lür

**NIHÂVEND**  
**Her Seher Gonceler Açtıkça**

2

The image shows a musical score for the piece 'Her Seher Gonceler Açtıkça' in the style of 'Nihâvend'. The score is written on two staves. The top staff is labeled 'Saz' and the bottom staff is labeled 'Arasazi'. The top staff begins with a treble clef, a key signature of one flat (B-flat), and a 7/8 time signature. It contains a melodic line with a first ending bracket labeled '1' and a second ending bracket labeled '2'. The bottom staff also begins with a treble clef and a key signature of one flat, and contains a melodic line that concludes with a double bar line and a repeat sign. The music is written in a traditional style with various note values and rests.

Her seher gonceler açtıkça solan gül dökülür  
Eski sevdâ yarasından, yeni bir aşk görünür  
Dost elinden kimi hasret, kimi vuslattan ölür  
Eski sevdâ yarasından, yeni bir aşk görünür