

NİHAVEND ŞARKI

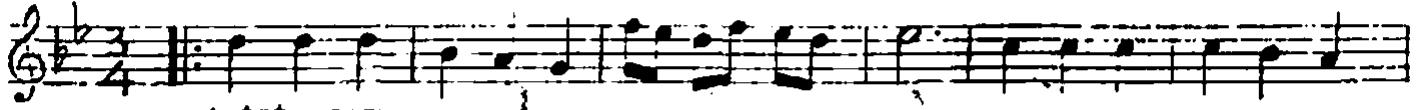
Müzik: Ârif Sâmî TOKER

Usûlü: SEMÂî

(Nedir bu kalpteki tükenmez hüznü)

Söz: Zafer Keleş ERKEN

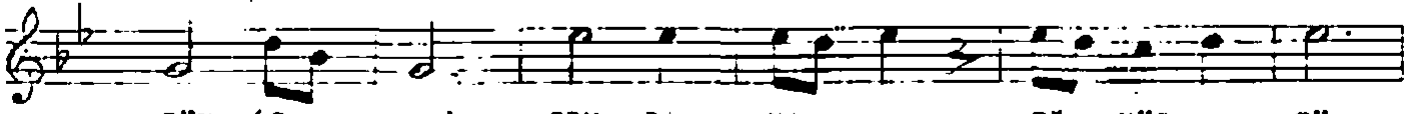
(♩=144)



(GİRİŞ SAZI



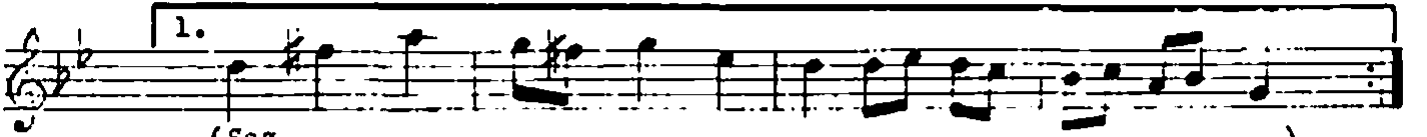
NE DİR BU KALP TE Kİ (Saz) TU KEN ... MEZ .. HU



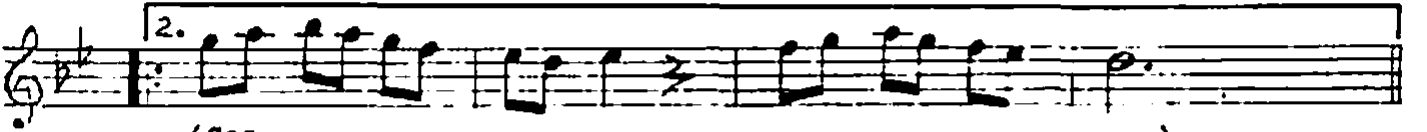
ZÜN (Saz) ZİN DA NA DÜ NÜŞ .. TU



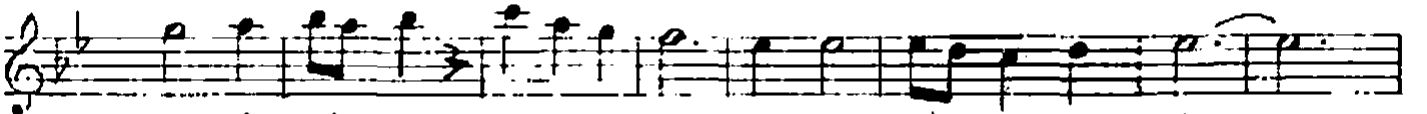
GE CEM GÜN DÜ ZÜN



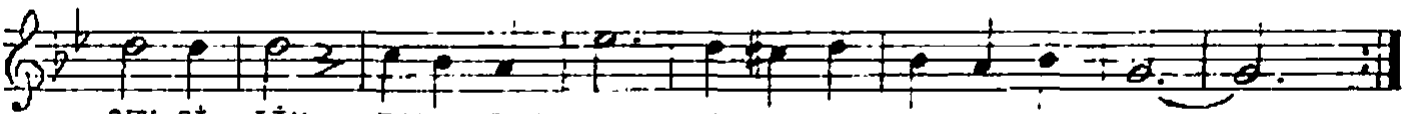
(Saz)



(Saz)



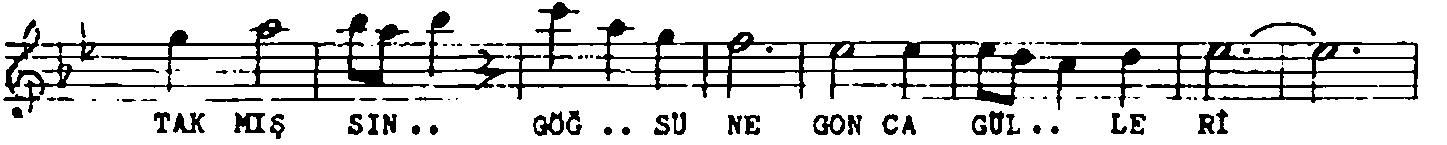
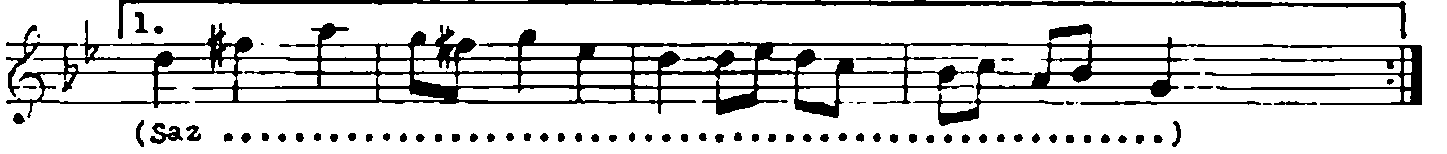
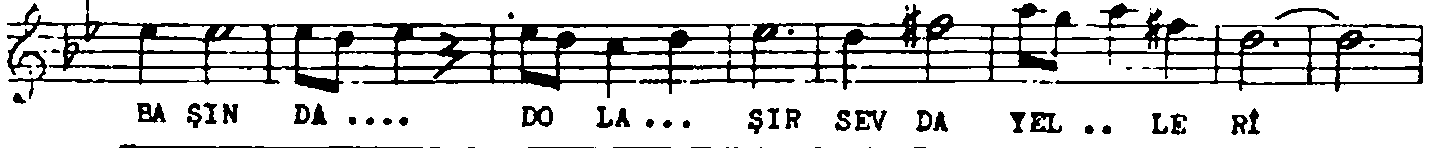
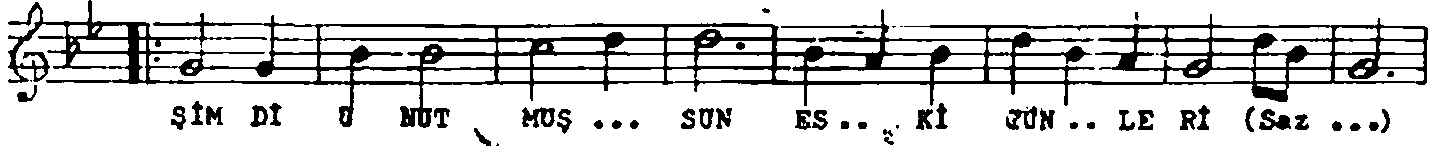
KAL Bİ Mİ.... YA RA .. LAR A CI BİR .. SÖ ZÜN



SEV Gİ LİM BAŞ .. LAT TIN GÖ NÜL .. DE .. HÜ ZÜN

./..

②



(1) NEDİR BU KALPTEKİ TÜKENMEZ HUZUN
ZINDANA DÖNÜŞTÜ GECEM GÜNDÜZÜM
KALBİMİ YARALAR ACI BİR SÖZÜN
SEVGİLİM BAŞLATTIN GÖNÜLDE HUZUN

(2) ŞİMDİ UNUTMUŞSUN ESKİ GÜNLERİ
BAŞINDA DOLAŞIR SEVDA YELLERİ
TAKMIŞSIN GÖĞSÜNE GONCA GÜLLERİ
SEVGİLİM BAŞLATTIN GÖNÜLDE HUZUN

(Zafer Kemâl ERKEN)