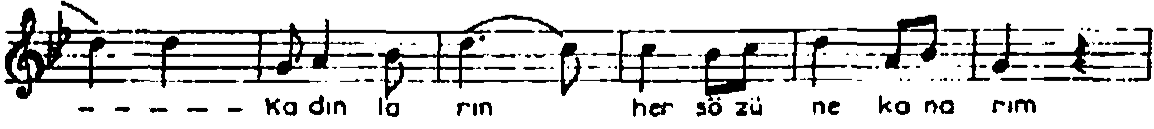
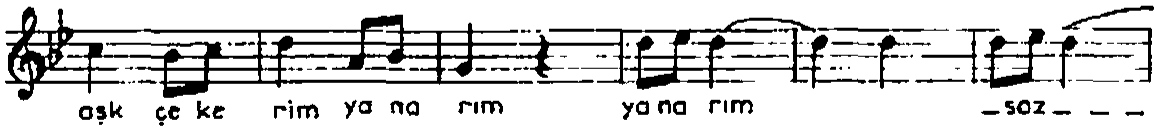
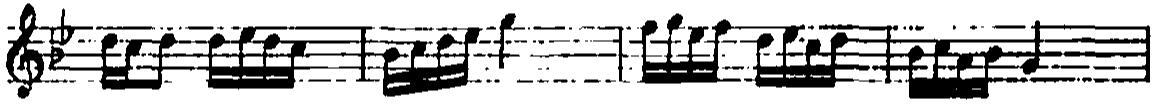
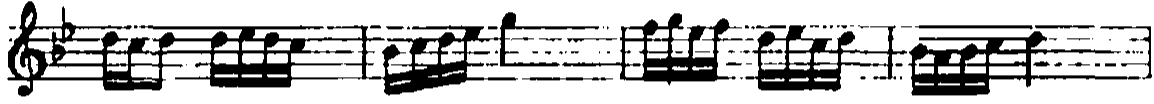
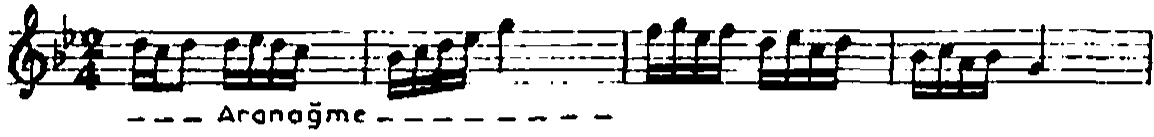


NIHÂVEND ŞARKI

Kadınlar erkekler

BESTE
ve : Yesârî Âsım
GÜFTE ARSOY

USÛLÜ : Nîm sofyan



NIHAVEND ŞARKI'nin devamı 2.

Ah su er kek ler er kek ler ah şu er kek

ERKEK

ler --- saz --- Ka din be nim ha ya ü min sü sü

dür sü sü dur --- saz --- bü tün aş

kim o nun şı rin se si dir se si dir

--- saz --- bü tün zev kim ce fa sı iş

ve si dir Ah şu ka dın lar --- saz ---

---KADIN---

ah şu ka dın lar --- saz --- Er kek ler de ve fa yoktur

e zel den zevk a lır lar ner gün başka gu zel den

hoş la nır lar on lar in ce cik bel den --- saz --- ah şu er kek

ler er kek ler ah şu er kek ler --- saz ---