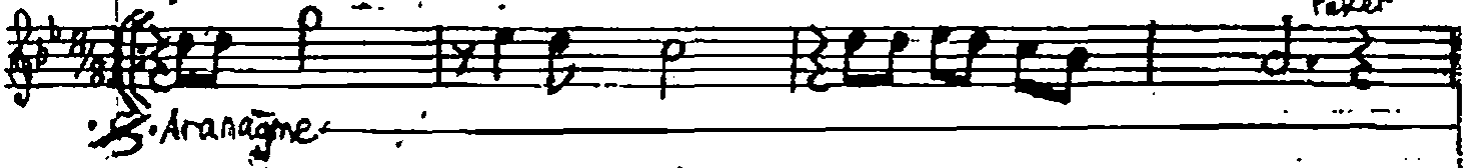


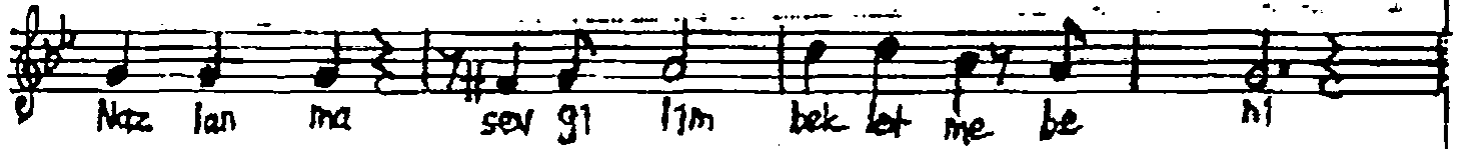
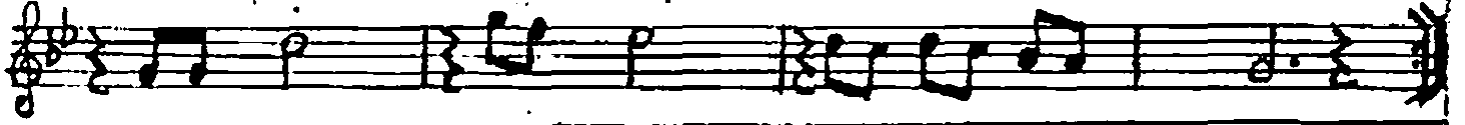
3'44" (♩=240)  
Düyek

NİHÂVEND ŞARKI  
(Nazlanma - Özledim Seni)

Söz ve Müzik  
Engin  
Peker



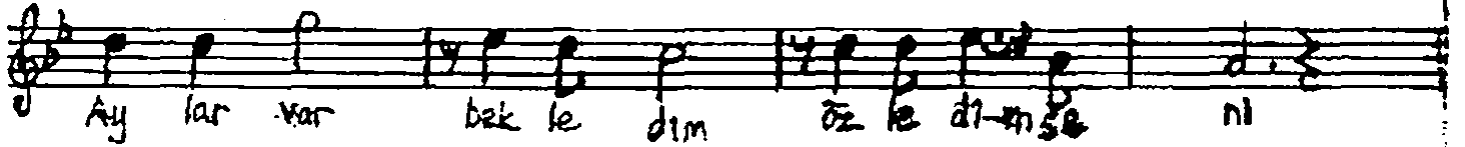
Aranagme



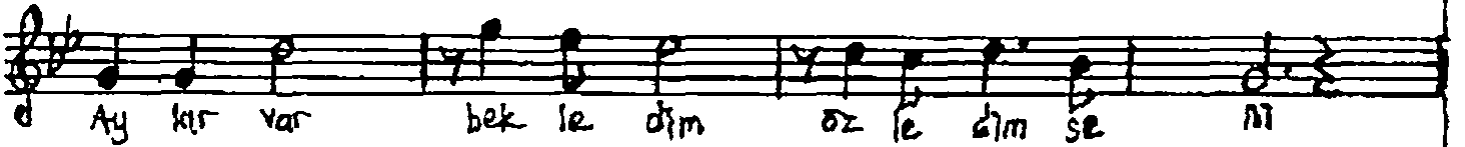
Naz lan ma sev gi lım bek let me be ni



Naz lan ma sev gi lım bek let me be ni



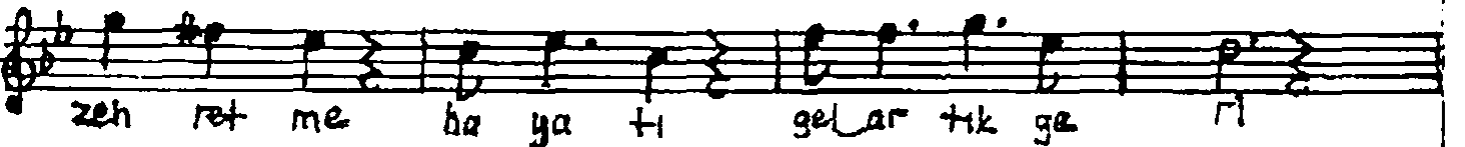
Ay lar var bek le dim öz le di-mi-se ni



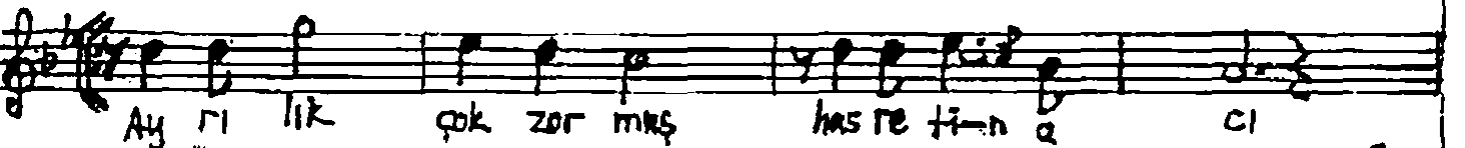
Ay kir var bek le dim öz le dim se ni



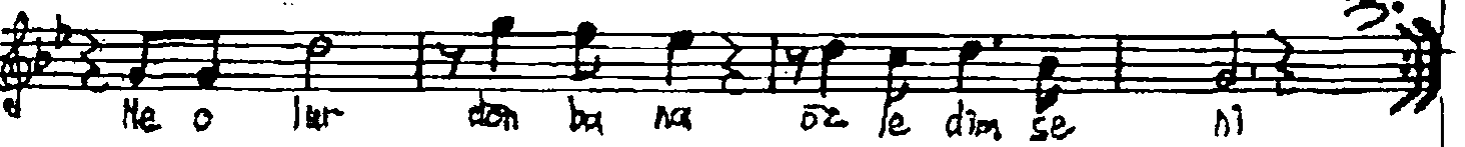
zeh ret me ha ya tı ge lar tık ge ni



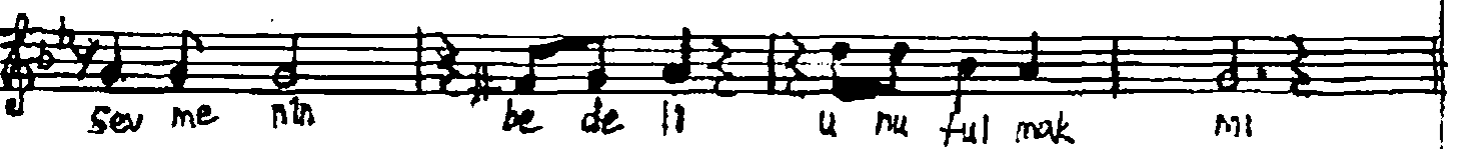
zeh ret me ha ya tı ge lar tık ge ni



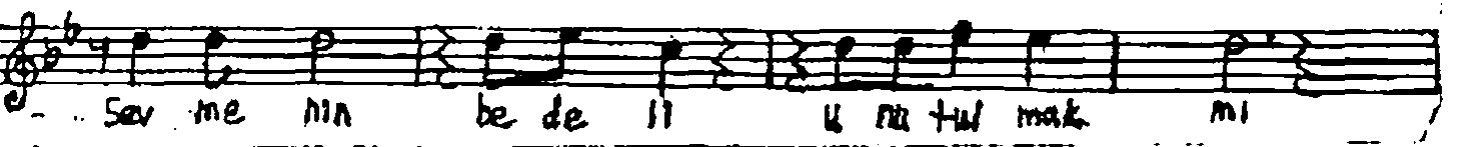
Ay rı lık çok zor maş has re ti-ni a ci



He o lar don ba na öz le dim se ni



sev me nin be de li u nu ful mak ni



Sev me nin be de li u nu ful mak ni

En g zel . a ğın da yal nız kal mak mı

En g zel a ğın da yal nız kal mak mı

Ver di ğın sz ler le a vu tl mak mı

Ver di ğın sz ler le a vu tl mak mı

E ğer bir ğn o lur do ner sen ba na

Ra zı ğım her Őe ye a le dim se ni

Nazlanma sevgilim, bekletme beni  
Aylar var bekledim, zledim seni  
Zehretme hayatı, gel artık geri  
Ayrılık ok zorktu, hasretin acı  
Ne olur dn bana, zledim seni

Sevmenin bedeli unutulmak mı ?  
En gzel ağında yalnız kalmak mı ?  
Verdiğin szlerle avutulamak mı ?  
Eğer bir ğn olur dnersen bana  
Nazıyım her Őeye, zledim seni