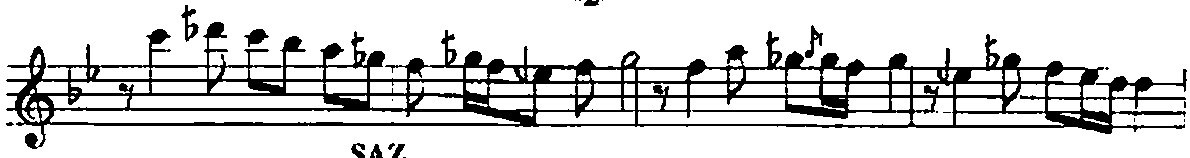




# Nihâvend

-2-



SAZ

Güfte mah zun bes te mah zun



Devr-i hindi = 160

saz da has ret

hüz nûvar

A Tempo

SAZ

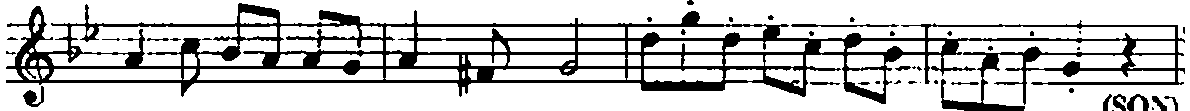


Es ki vus lat bes te sin den yük se lir ken her he ce



SAZ

Es ki vus lat bes te sin den



yük se lir ken her he ce

SAZ

(SON)

277/32-04.10.1998

İnleyen bir nağme vardı tanburunda dün gece  
Sanki sevda bahçesinden geçti gönlüm gizlice  
Güfte mahzun, beste mahzun, sazda hasret hüznü var  
Eski vuslat bestesinden yükselirken her hece