

# NIHÄVEND ŞARKI

====HASRETKİ SANA====

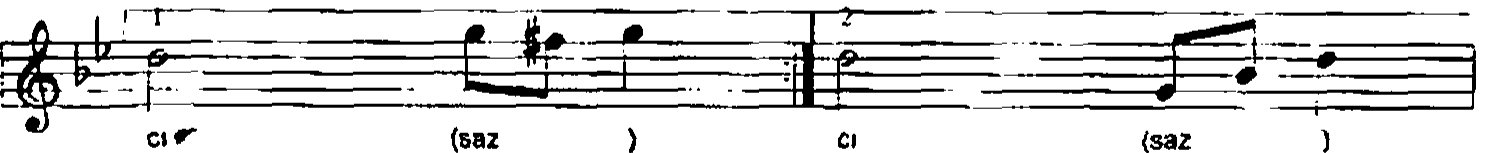
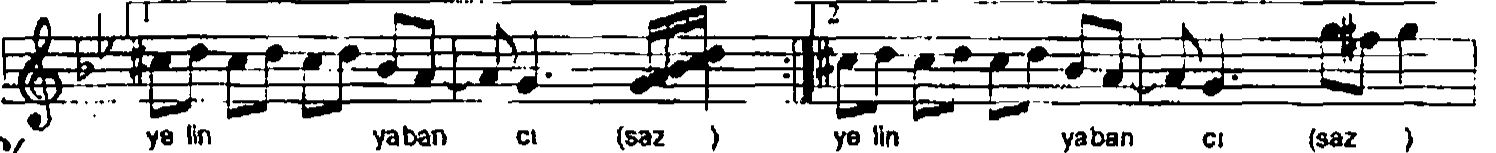
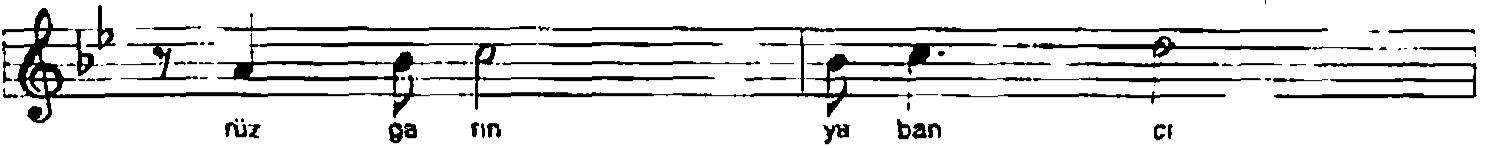
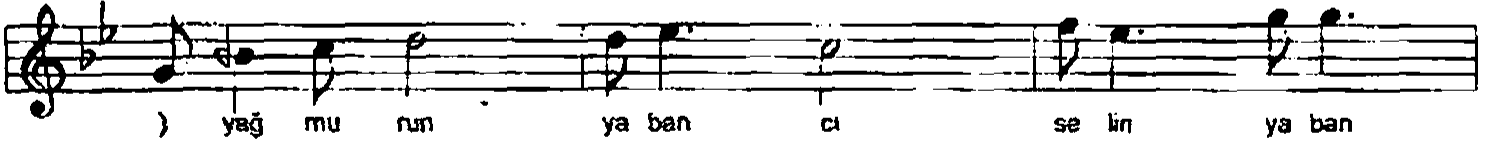
SÖZ: TAHSİN AKIŞ

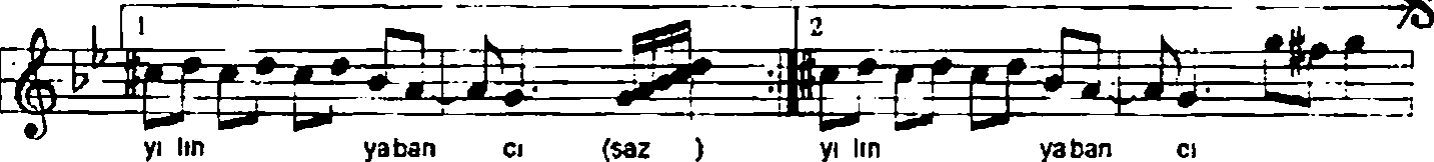
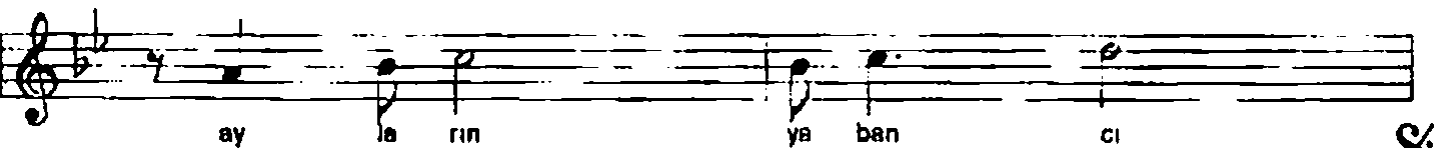
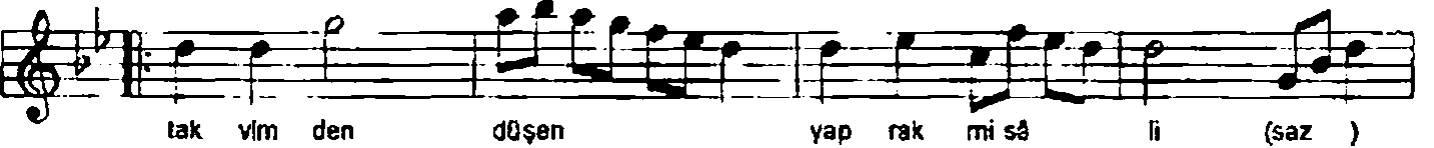
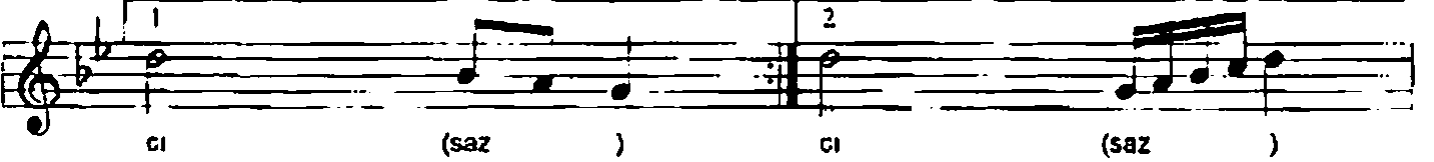
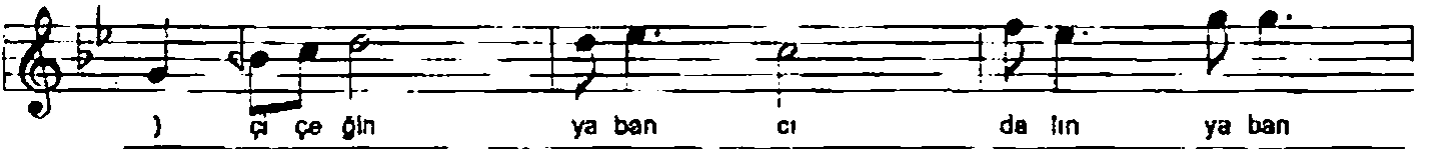
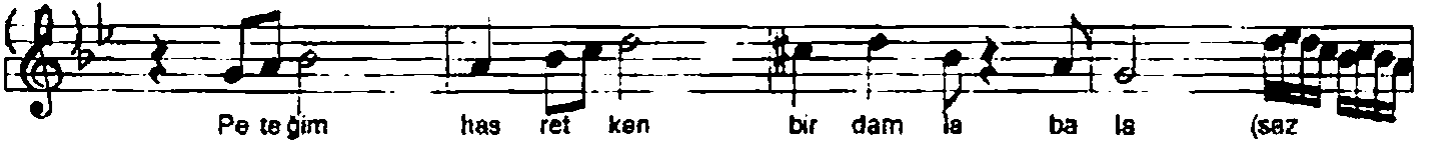
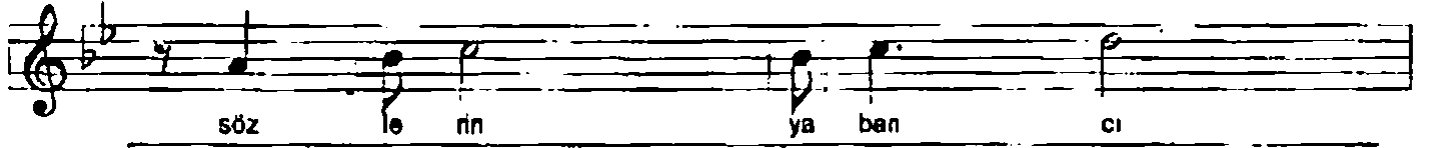
MÜZİK: SAIM AKIŞ

DÜYEK



(1)





Kuruyan dudaklar hasretki sana  
Yağmurun yabancı, selin yabancı  
Kavrulur durur yanar yüreğim  
Rüzgarın yabancı, yelin yabancı

Peteğim hasretken bir damla bala  
Çiçeğin yabancı dalın yabancı  
Takvimden düşen yaprak misali  
Ayların yabancı, yılın yabancı

Değişen benmiyim senmişin bilmem  
Duruşun yabancı halin yabancı  
Gözlerin çokşeyler söylüyor amma  
Sözlerin yabancı, dilin yabancı