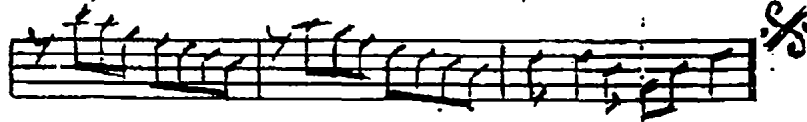
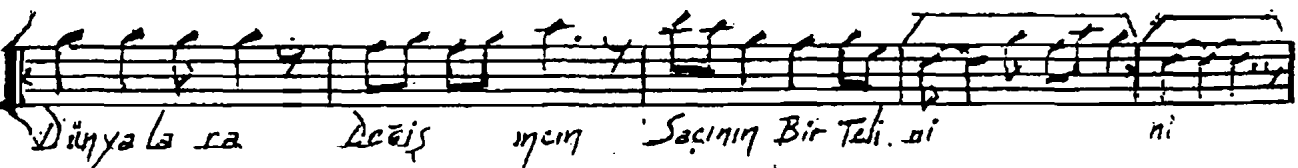
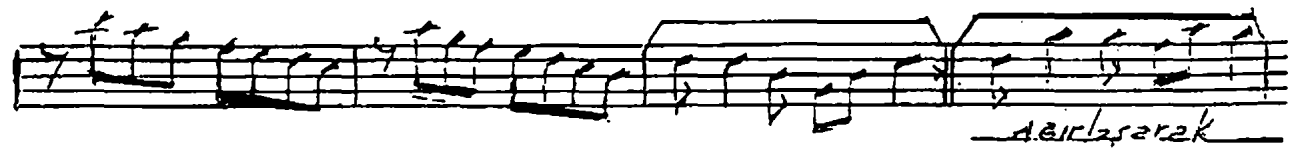
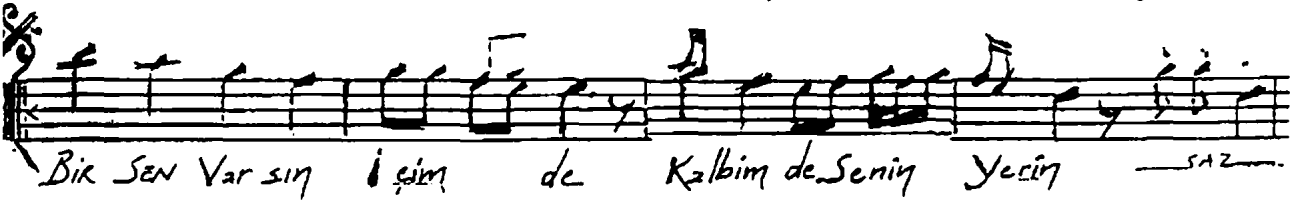
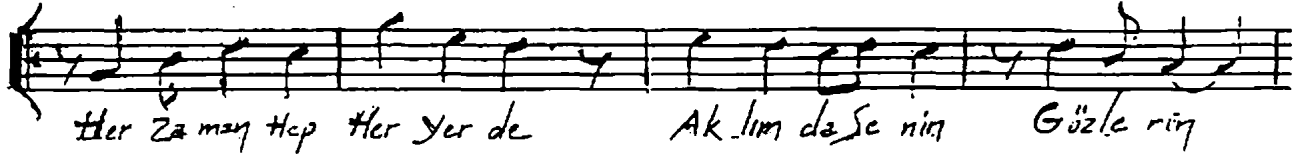
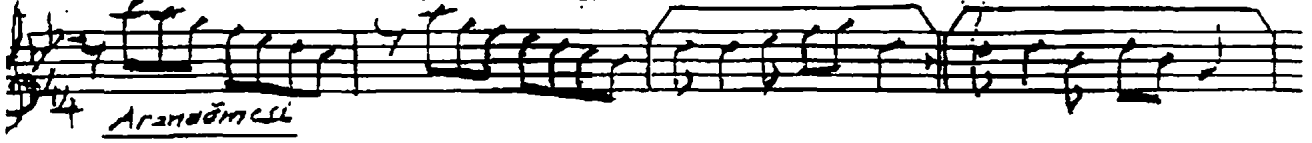


♩=160 Sürçü: 4'00"

NİHAVENT SARKI

Söz: GÜLSE TAŞBAŞ (YÖNEY)
Mizik: SULTAN MERTKALİ

SOFYAN.



SARKI

Her zaman hep her yerde- Aklında Senin Gözlerin
Bir Sen varsın içimde- Kalbimde Senin... yerin
Dünyalara değişmes- Saçının Bir..... Telini
Bir Sen varsın içimde- Kalbimde Senin... yerin