

NIHÄVEND ŞARKI

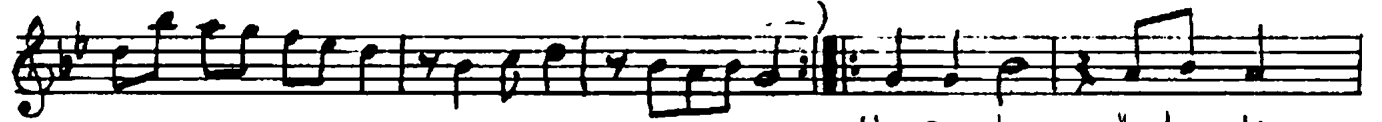
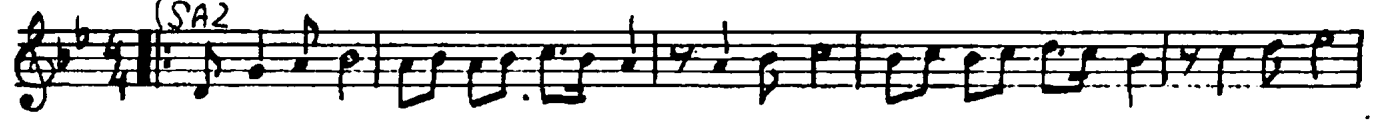
♩ = 108

"Herşeyden ötede bir sen varsın ki,"

Müzik: İrfan ÖZBAKIR

Söz: Aşkın TUNA

Usluü: Sefyan-Semâi



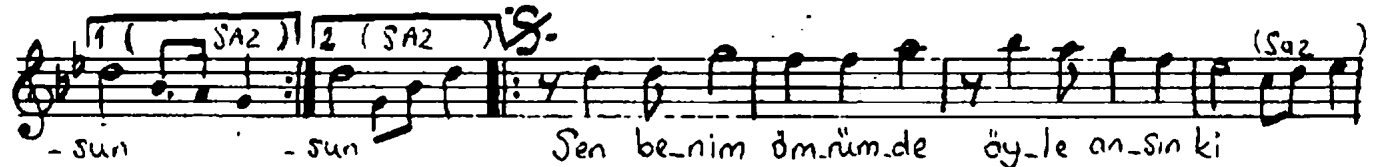
Her-sey-den ö-te-de



bir sen var-sın ki

Bü-tün dert-le-ri-mi

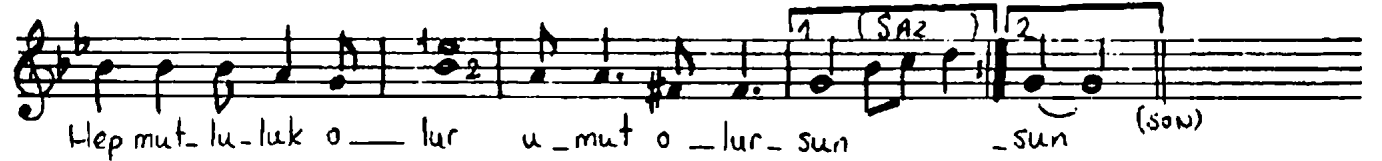
u-nut-tu-rur-



-sun

-sun

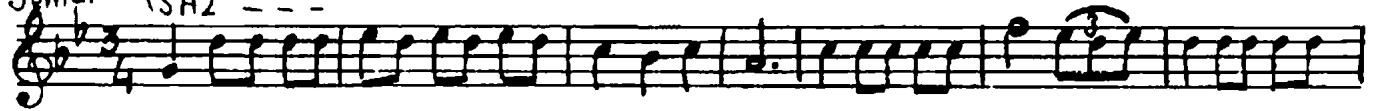
Sen be-nim öm-rüm-de öy-le an-sın ki



Hep mut-lu-luk o-lur u-mut o-lur-sun

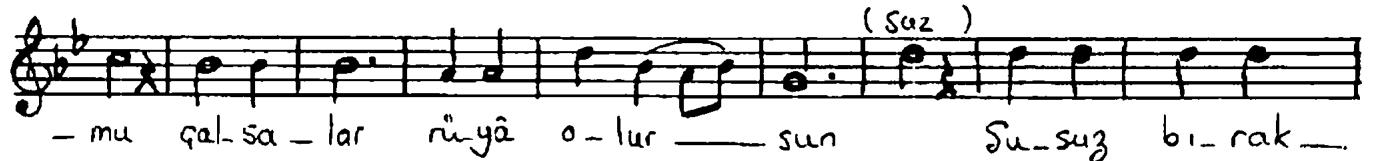
-sun (son)

152 Semâi (SAZ ---)



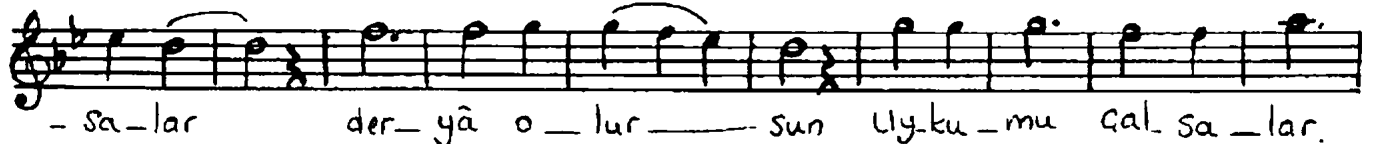
Su-suz bı-rak-sa-lar

der-yâ o-lur-sun Uyk-u-



-mu çal-sa-lar rü-yâ o-lur-sun

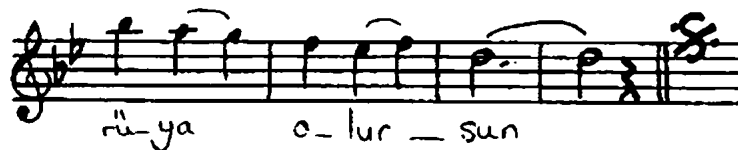
Su-suz bı-rak-



-sa-lar

der-yâ o-lur-sun

Uyk-u-mu çal-sa-lar.



rü-ya

o-lur-sun

Her şeyden ötede bir sen varsın ki
Bütün dertlerimi unutturursun
Sen benim ömrümde öyle ansın ki
Hep mutluluk olur, umut olursun

Susuz biraksalar deryâ olursun
Uykumu çalsalar rüya olursun
Sen benim ömrümde öyle ansın ki
Hep mutluluk olur, umut olursun