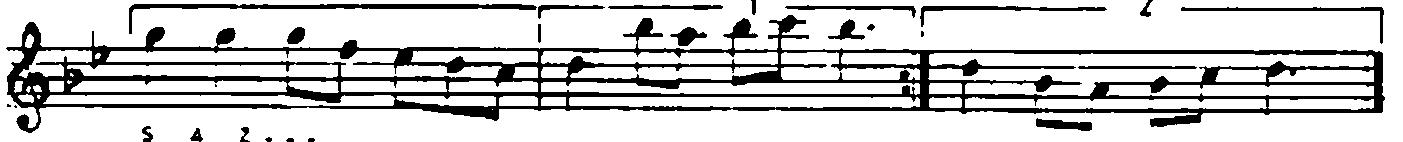
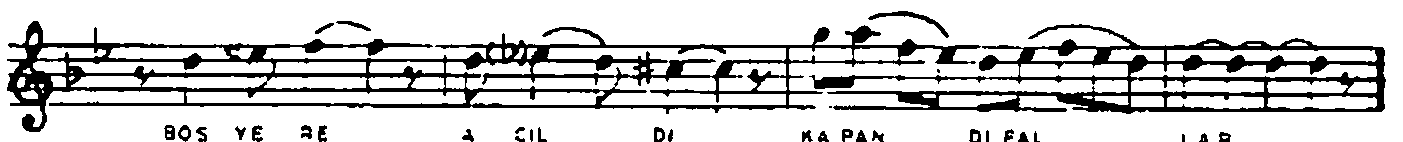
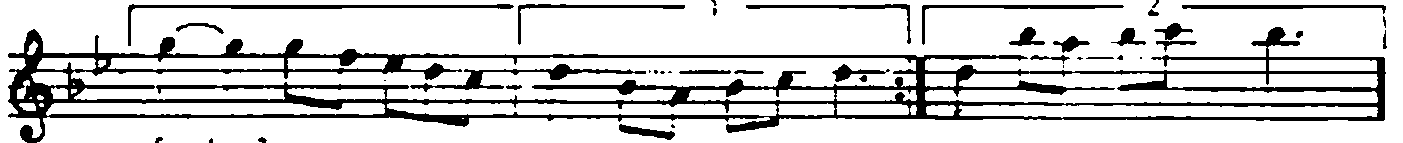
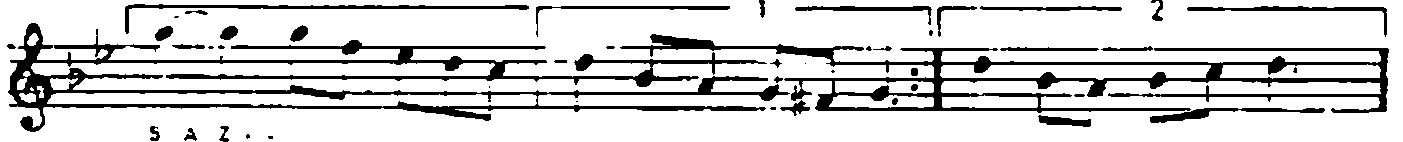
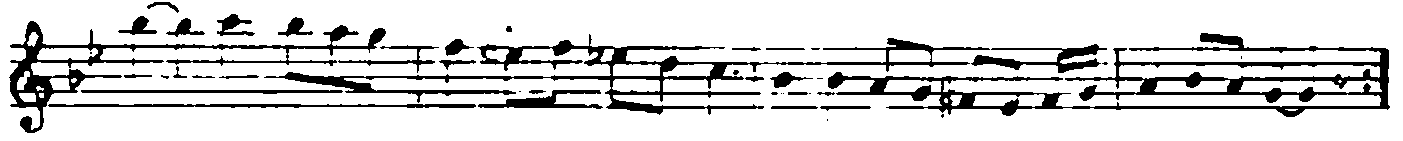


*İçimde sisli bir mevsimin yaşı*

BİR RESMİN ÖNÜNDE YAŞANDI YILLAR  
SAÇINDA AKLARLA GELSE (SAZ...) NE ÇIKAR  
SAZ...

İÇİNDE SİSLİ BİR MEVSİMİN YAS  
TAKVİMLER BAHARA ERSE NE ÇIKAR  
BİR YILDIZ ANSİZİN KAYAR YA BAZI  
NUR OLUP DÜNYAMA İNSE NE ÇIKAR

KAÇ KERE ÇİÇEKLE DÖNANDI DALLAR  
BOŞ YERE AÇILDI KAPANDI PALLAR  
BİR RESMİN ÖNÜNDE YAŞANDI YILLAR  
SAÇINDA AKLARLA GELSE NE ÇIKAR