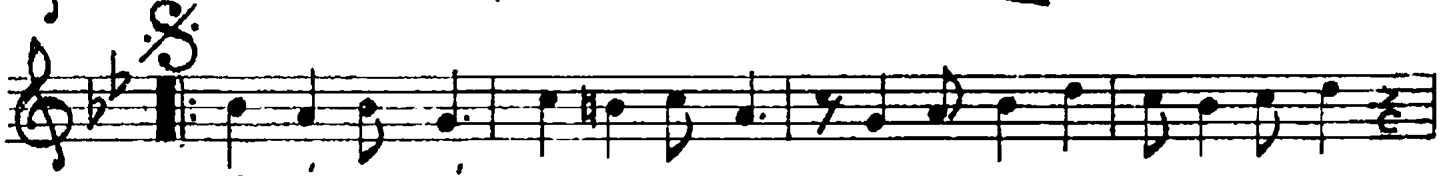


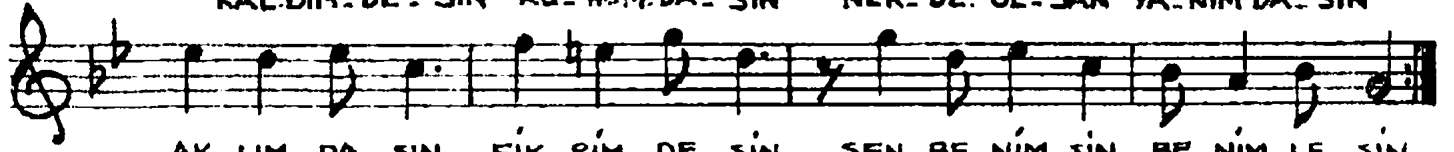
NIHAVEND ŞARKI
(Kâlbim desin)

Usûlü : Dûyek

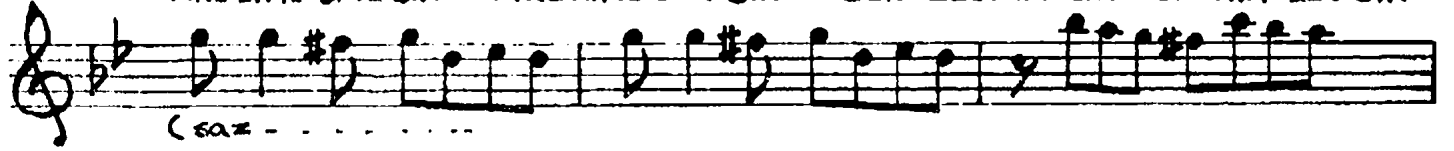
Mûzik : Ahmet Melik



KÂLBİM DE SİN RUHUM DA SİN NER DE OL SAN YA NİM DA SİN



AK LIM DA SİN FİK RİM DE SİN SEN BE NİM SİN BE NİM LE SİN



(SAZ - - - - -)



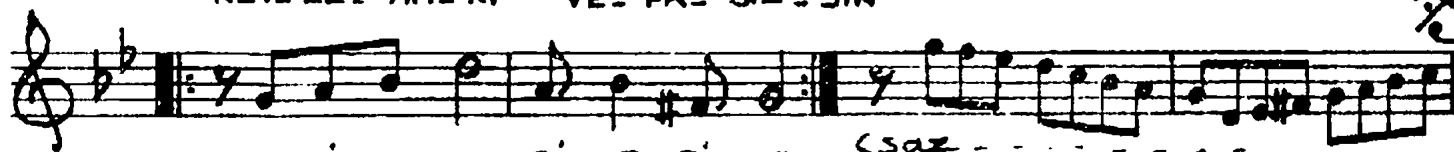
BİT SİN AR TIK YE TER Çİ LE (SAZ - - - - -)



SEN BA NA DÖN ŞE SEN Yİ NE (SAZ - - - - -)



NEY LE YİM Kİ VE FÂ SIZ SİN (SAZ - - - - -)



SE Vİ YO RUM Bİ LE Bİ LE (SAZ - - - - -)