

NIHÄVEND ŞARKI
KÖMÜR GÖZÜN AKLIM ALDI

MÜZİK : Özgen GÜRBÜZ
SÖZ : Özgen GÜRBÜZ

USÛLÜ : YÜRÜK SEMAİ

$\text{♩} = 208$

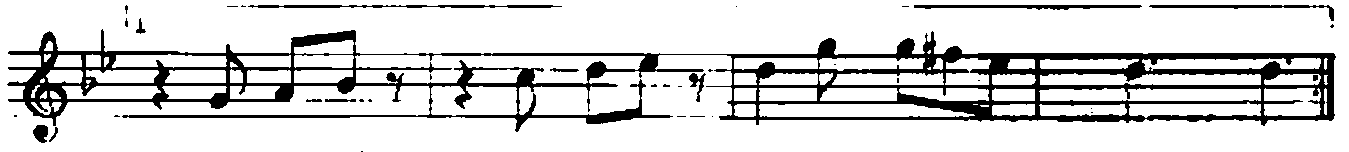
ARANAĞME



NIHÂVEND ŞARKI

KÖMÜR GÖZÜN AKLIM ALDI

- 2 -



CEY LA NİM CEY LA NİM GEL BE NİM CA NİM



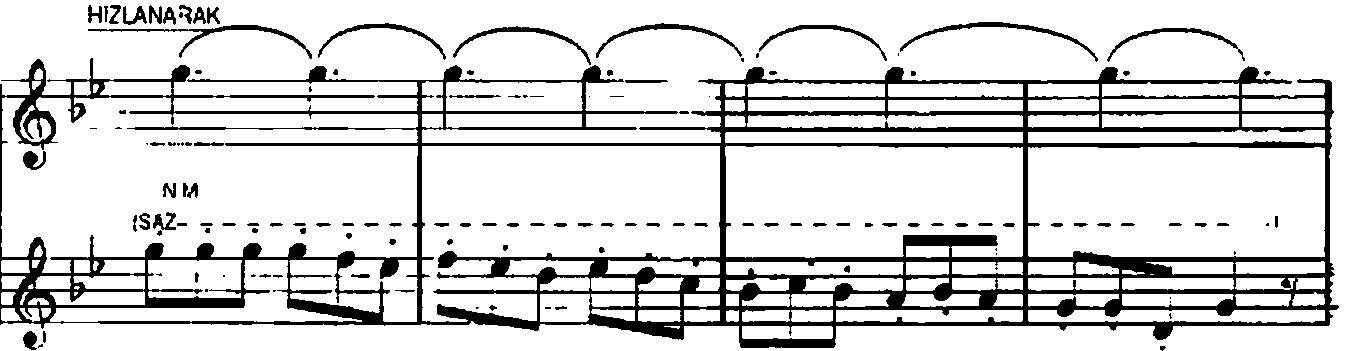
CEY LA NİM CEY LA NİM GEL BE NİM CA NİM

D.C. al Coda



KARAR

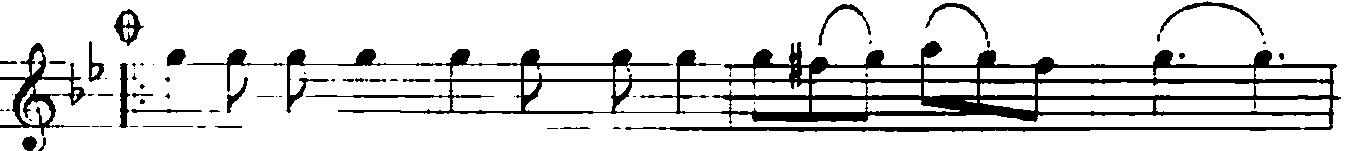
CEY LA NİM CEY LA NİM GEL BE NİM CA



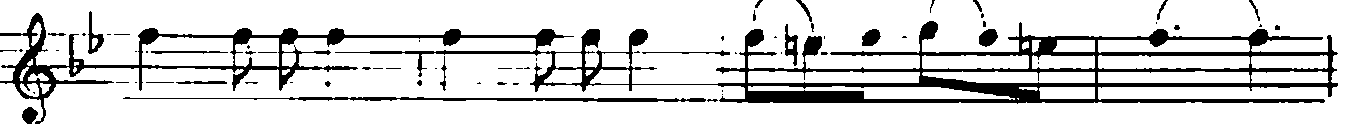
HIZLANARAK

NİM

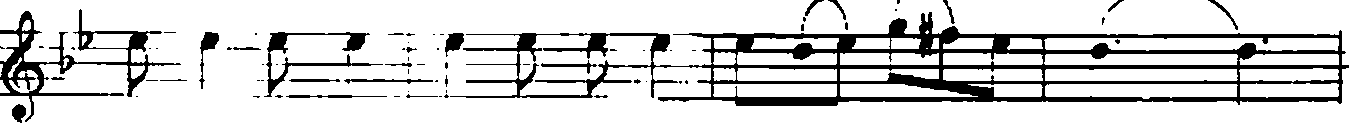
(SAZ-



KAL BI Nİ VER KAL BI Nİ VER BA NA AY BA LAM



AŞ KI Mİ BİL GÖN LU ME GİR GÖN LÜ ME BA ME



GÜ ZEL Lİ GİN YAK TI BE Nİ BE Nİ AY BA LAM



TEKRARDA YAVAŞLAYARAK

GÜ ZEL Lİ GİN YAK TI BE Nİ BE Nİ AY BA LAM