

# NIHÂVEND ŞARKI

USÛLÜ : NİM SORDAN

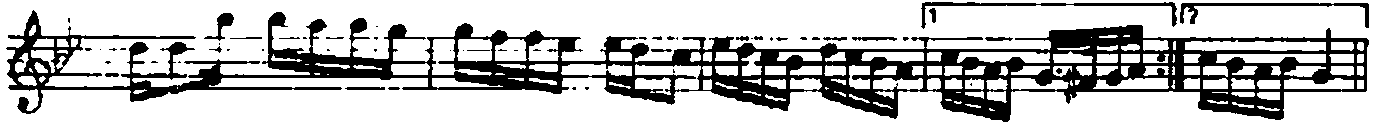
( LEYLÂKLAR AÇILMIŞ GELEN BAHARDIR )

MÜZİK : ALÂEDDİN SENSOY

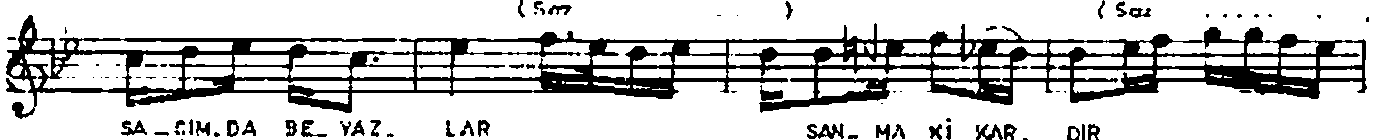
SÖZ : SALİH KORKMAZ

♩ = 66

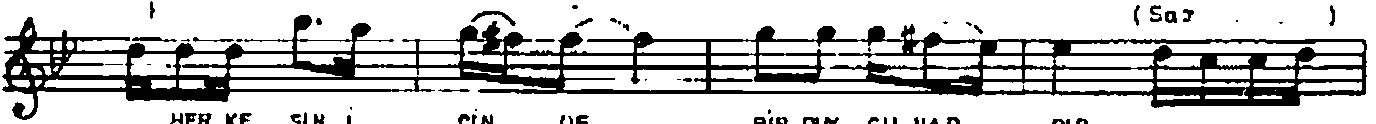
♩ Giriş Sözi



LEYLÂKLAR AÇILMIŞ GELEN BAHARDIR



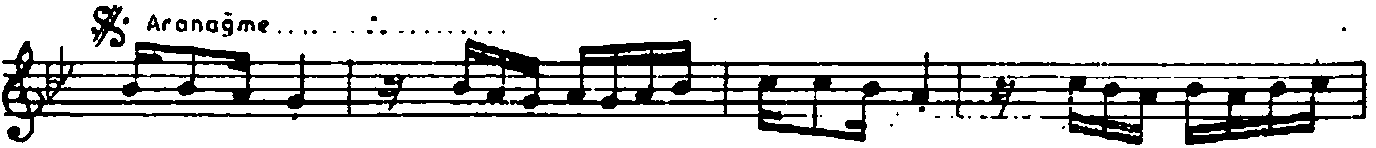
SAGIMDA BEYAZLAR SANMA KIKARDIR



HERKESIN ICINDE BIR DUYGU VARDIR



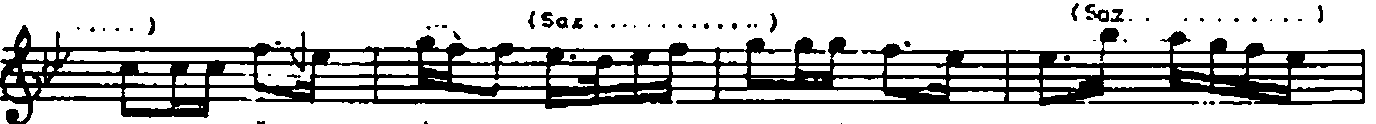
BENIMDE GONLUMDE YALNIZSEN VARSIN SIN



♩ Aranağme



BU ÖMRÜM YOLUNDA GEÇİP GEÇSE DE



OU DA ÖMRE LINDEN ZENİR İÇSE DE

NİHÂVEND ŞARKI  
( LEYLÂKLAR AÇILMIŞ GELEN BAHARDIR )  
( Sayfa 2 )

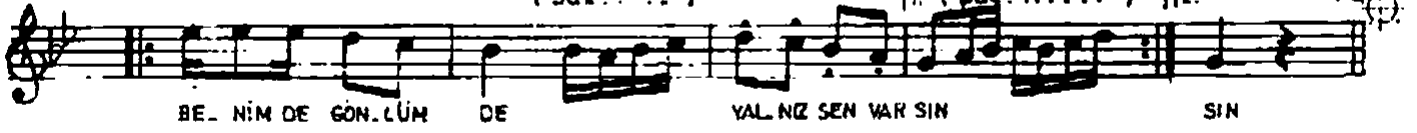
( Saz ..... )

( Saz ..... )



( Saz ..... )

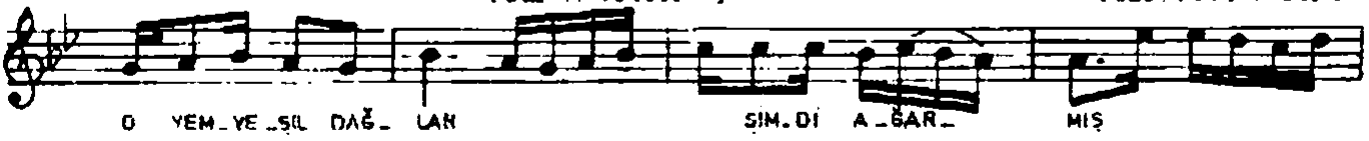
[ f. ( Saz ..... ) ] 2.



2.

( Saz ..... )

( Saz ..... )

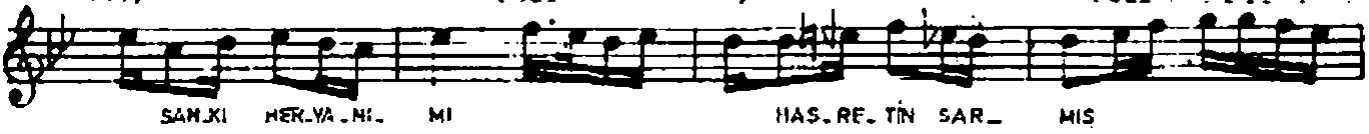


( ... )

( Saz ..... )

( ... )

( Saz ..... )

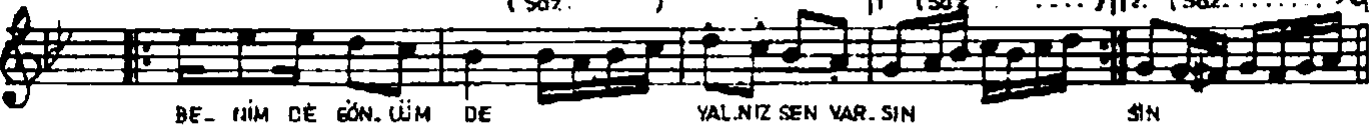


( Saz ..... )



( Saz ..... )

[ f. ( Saz ..... ) ] 2. ( Saz ..... )



ŞARKININ BİTİŞİ

( Saz ..... )

( Saz ..... )



— 1 —  
LEYLÂKLAR AÇILMIŞ GELEN BAHARDIR  
SAÇIMDA BEYAZLAR ŞANMA Kİ KARDIR  
HERKESİN İÇİNDE BİR DUYGU VARDIR  
BENİM DE GÖNLÜMDE YALNIZ SEN VARSIN

Nakarat

RU ÖMRÜM YOLUNDA GELİP GEÇSE DE  
DUDAĞIM ELİNDEN ZEHİR İÇSE DE  
ÖRÜMDE BİR SÜZEL SECDE ETSE DE  
BENİM DE GÖNLÜMDE YALNIZ SEN VARSIN

— 2 —  
O YEMYESİL DAĞLAR ŞİMDİ AĞARMIŞ  
SANKİ HER YANINI HÂSRETİN SARMIS  
MECNUNUN GÖNLÜNDE LEYLÂ Sİ VARMIS  
BENİMDE GÖNLÜMDE YALNIZ SEN VARSIN.

Nakarat.