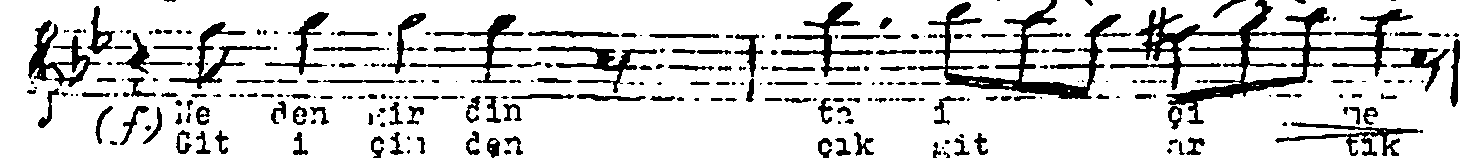
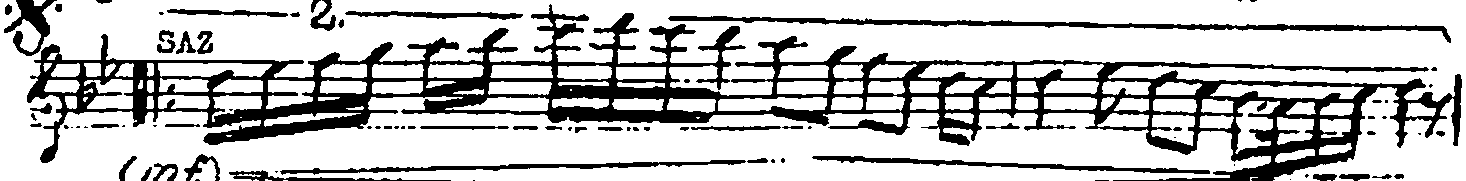
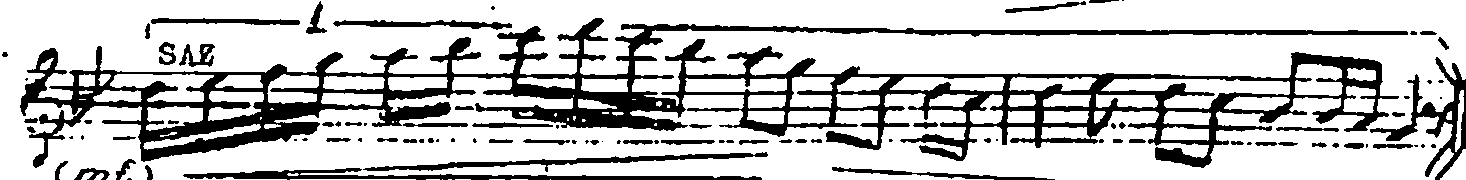
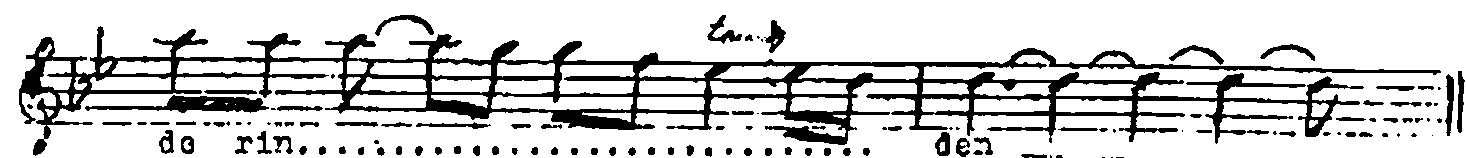
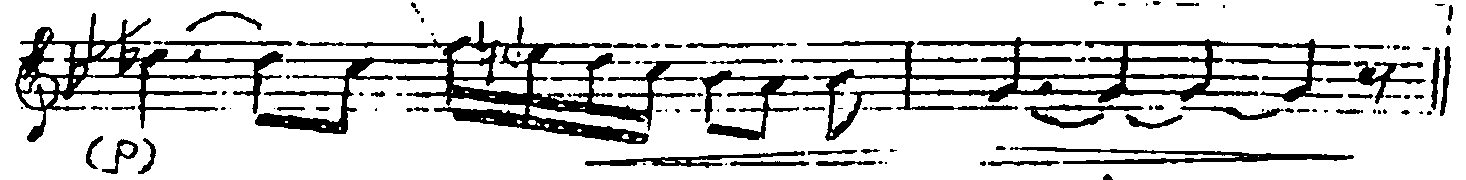
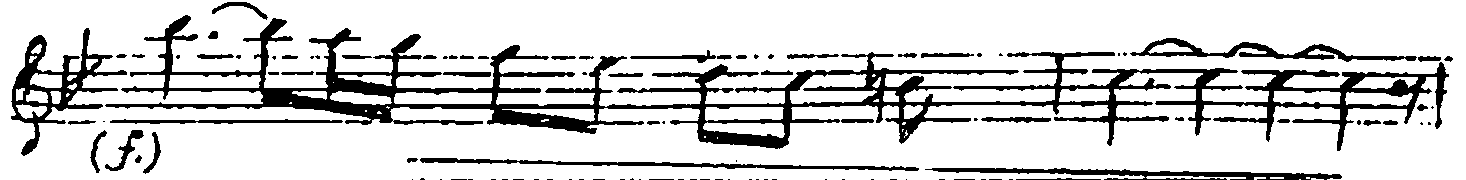
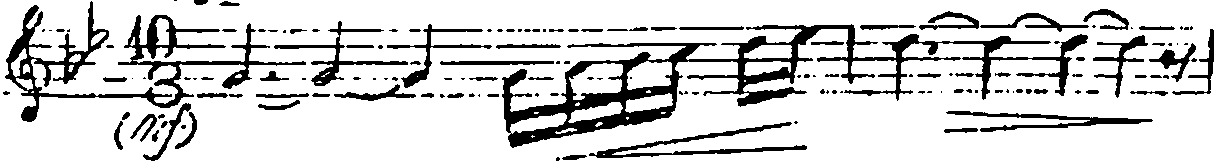


NIHAVEND ŞARKI  
(MEMLİ GÖZLER)

Beste) NECDET VAROL  
Gülte)

Curcun:  
(Aşır)

Giriş Sazı  
(P. 167)



*agüca-* (Tempo) *(mf)* *(agüca)* *(p)* *Tempo* *Fin*

Yor gun nem li göz le rin.....  
den..... yor gun nem.....  
göz le rin..... den  
Dık tin u san dım sev mek.....  
ten..... *(mf)* se ni böy le.....  
Bek le mek..... ten

Mâdem aşkı bilmiyordun,  
seviyecektin derinden.  
Neden girdin ta içime  
Yorgun, nemli gözlerinden  
Baktım usandırm sevmeekten  
Seni böyle beklemeekten  
Git içimden, çık git artık  
Yareme, nemli sözlerimden...