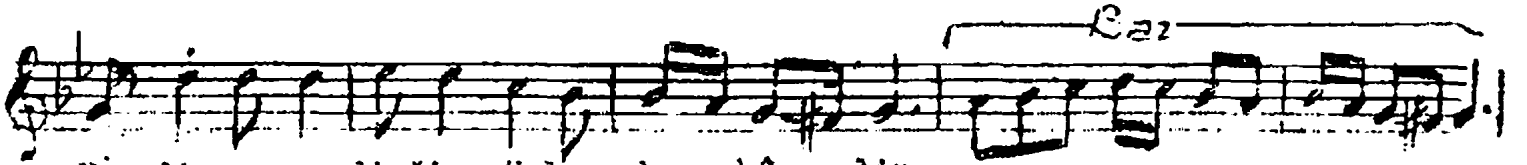
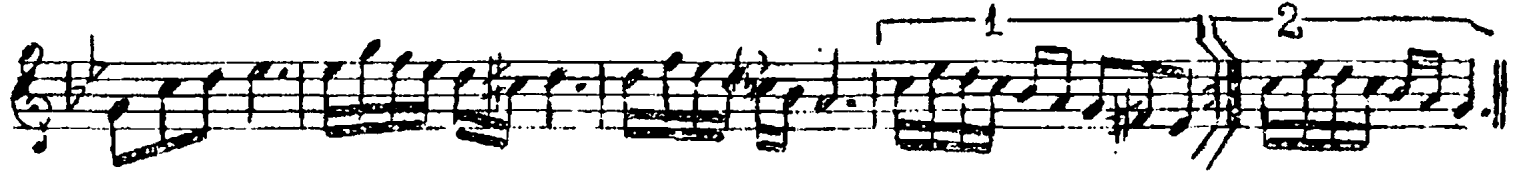


NIHAVEND ŞARKI

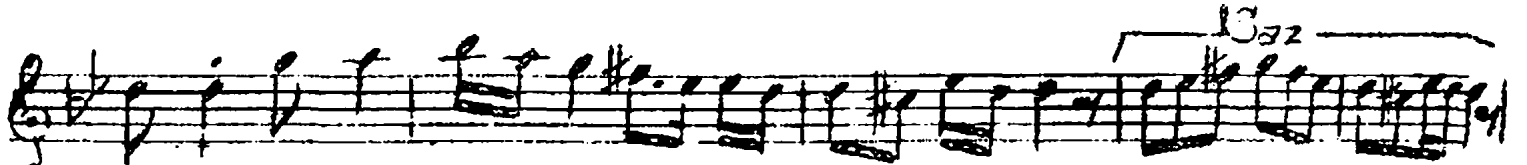
Yürük Senâî

Len'i Atlı

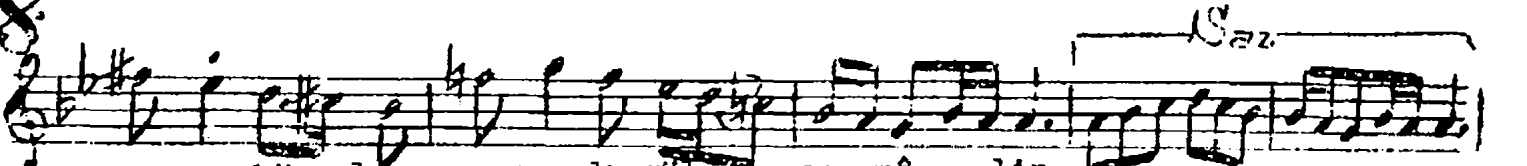
(Aranağnesi)



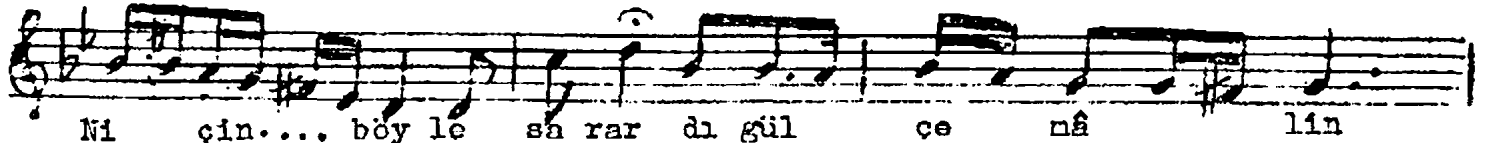
Ne dir a sev di ğim söyle bu hâ lin



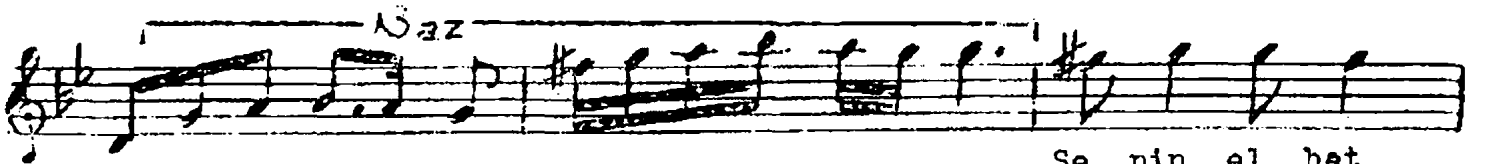
Ne dir a sev di ğim söy le bu hâ... lin



Ni çin böy le sa rar dı gül ce mâ lin



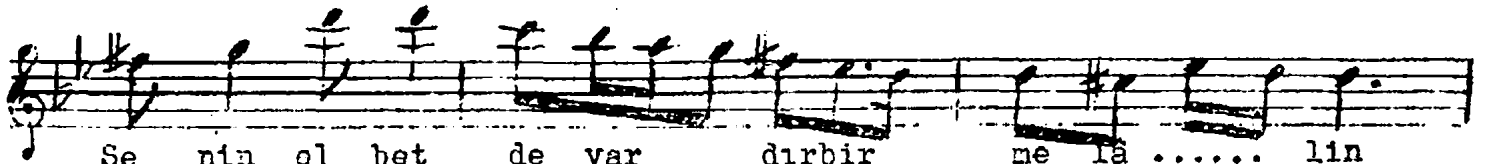
Ni çin... böy le sa rar dı gül ce mâ lin



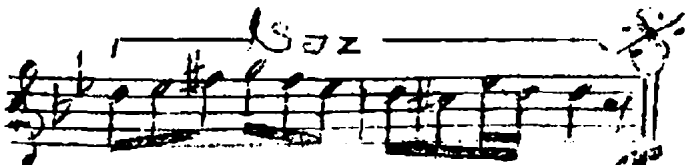
Se nin el bet



de var dir bir me lâ lin



Se nin el bet de var dirbir me lâ lin



Nedir a sevdiğin söyle bu hâlin
Niçin böyle sarardı gül cemâlin
Senin elbette vardır bir melâlin
Niçin böyle sarardı gül cemâlin.