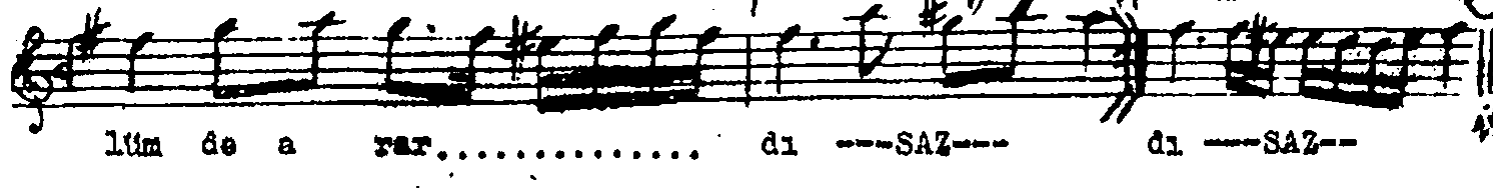
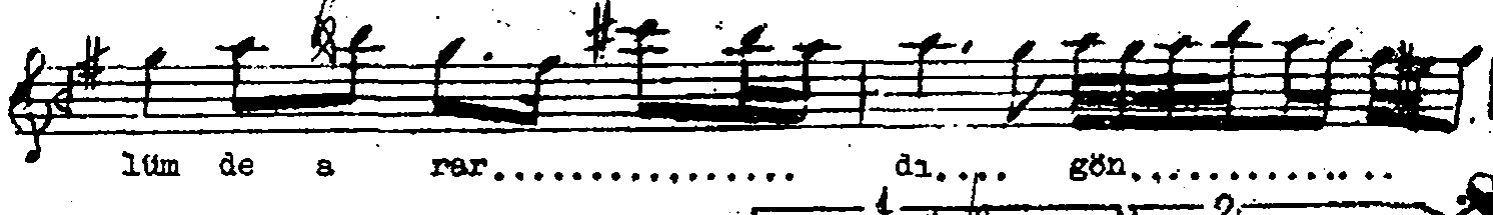
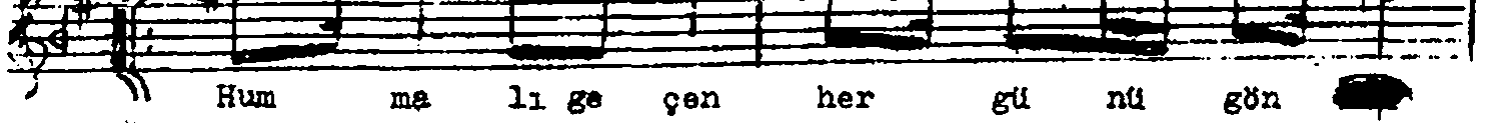
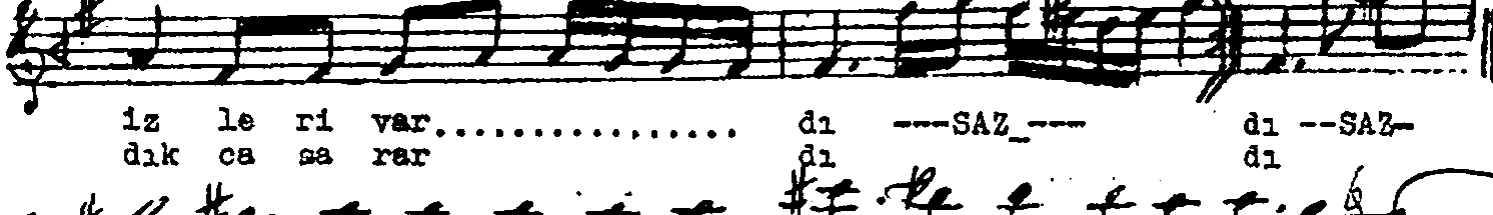
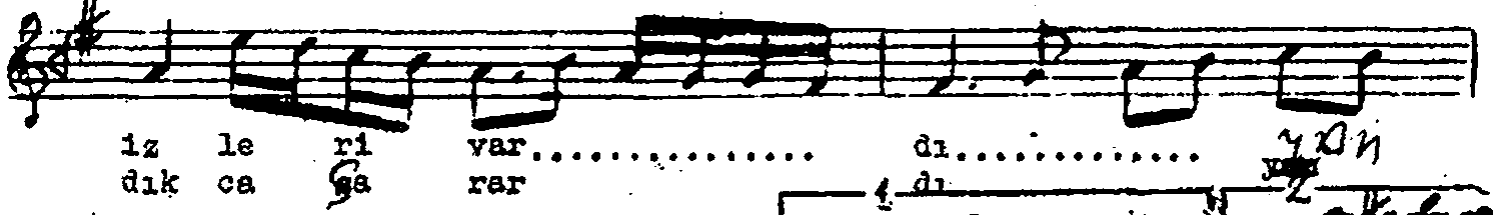
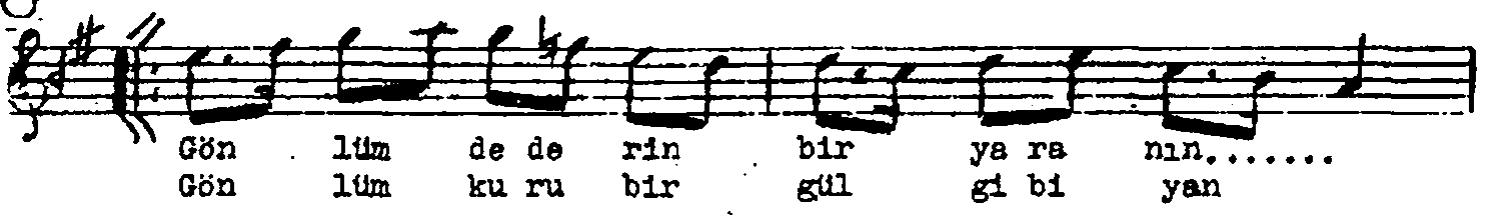
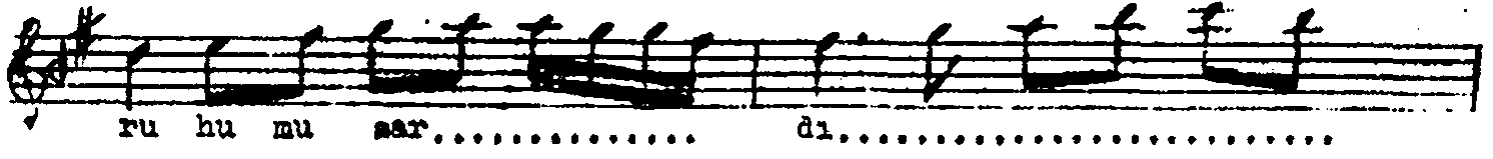
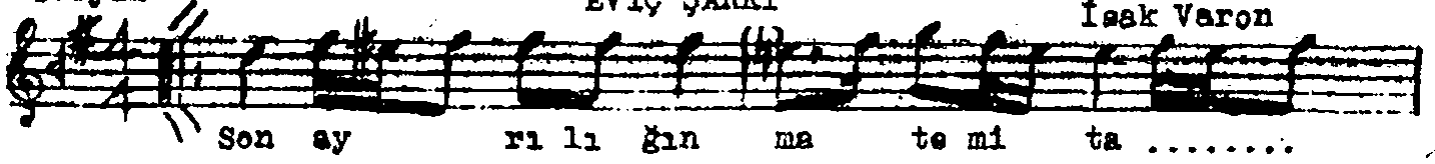


Sofyan

EVIÇ ŞARKI

İsaak Varon

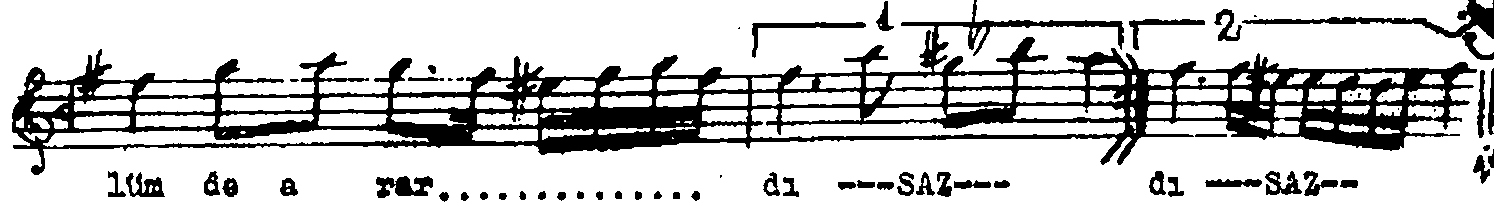
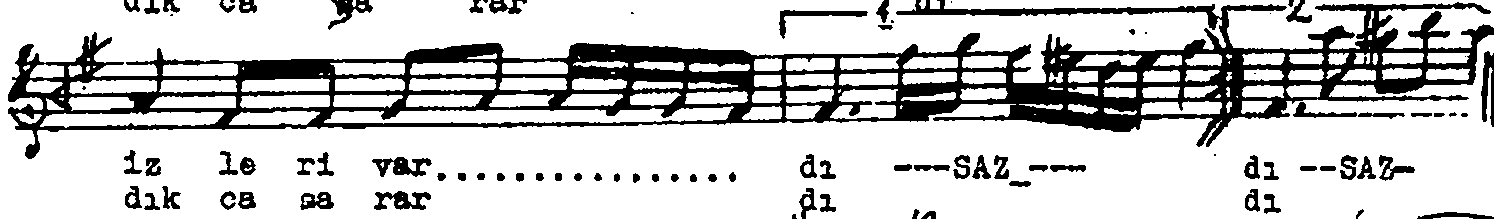
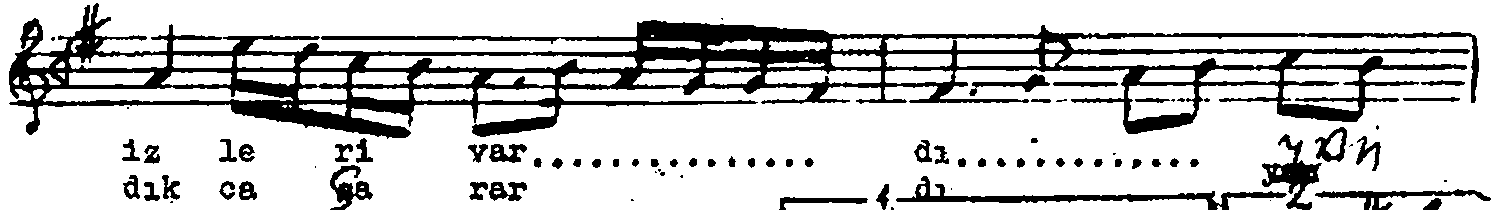
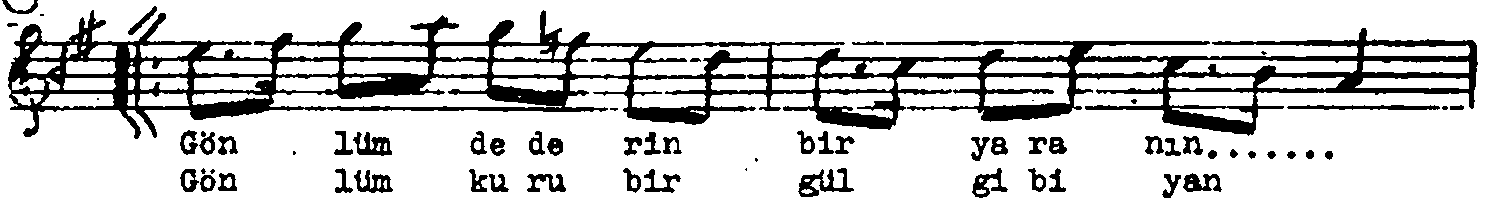
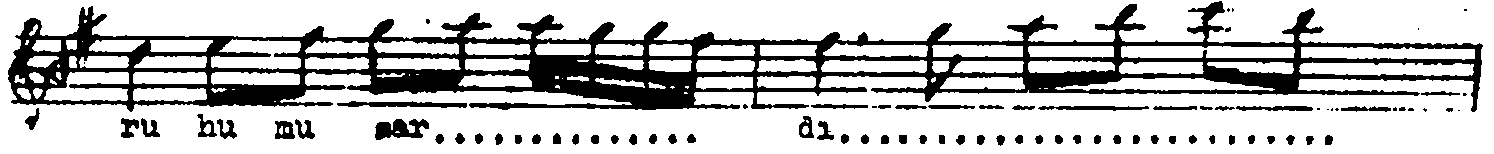
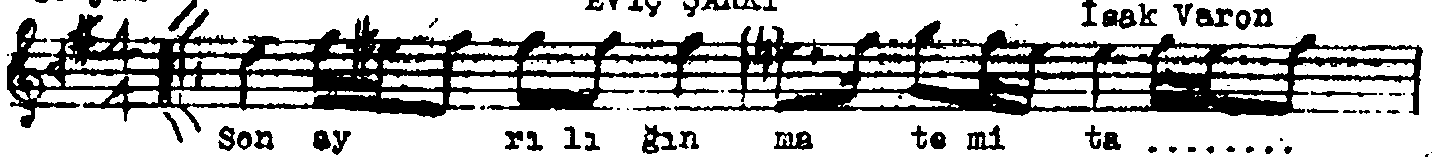


Son ayrılığın matemî tâ'rihümü sardı
Gönlümde derin bir yaranın izleri vardı
Hummalı geçen her günü gönlümde arardı
Gönlüm kuru bir gül gibi yandıksarardı.

Sofyan

EVIÇ ŞARKI

İsaak Varon



Son ayrılığın matemî târîhümü sardı
Gönlümde derin bir yaranın izleri vardı
Hummalı geçen her günü gönlümde arardı
Gönlüm kuru bir gül gibi yandıkkasarardı.