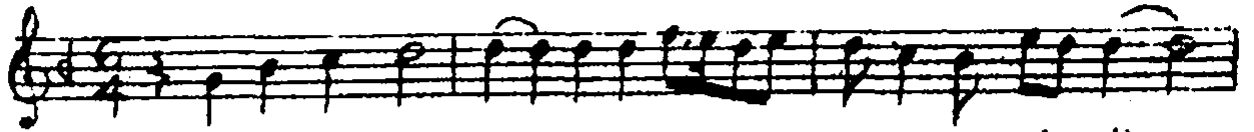
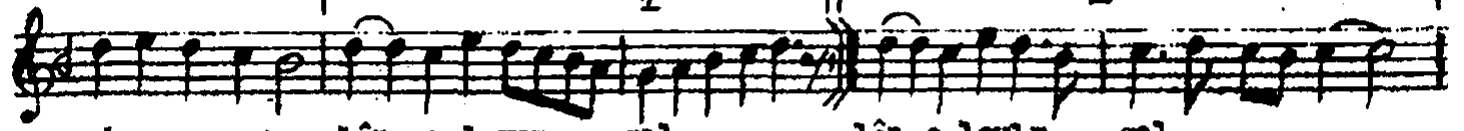


B E Y A T I Y Ü R Ü K S E M A I

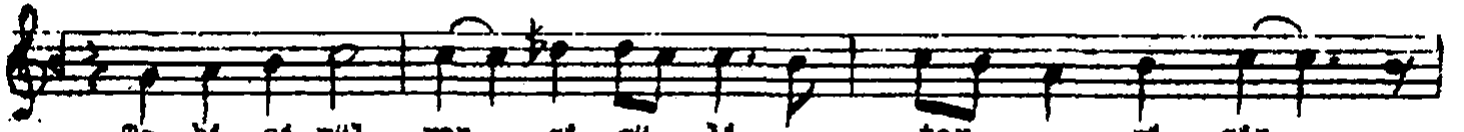
Şair Dede İzzet



Söy le gü zel ru hu mu sav ver mi sin



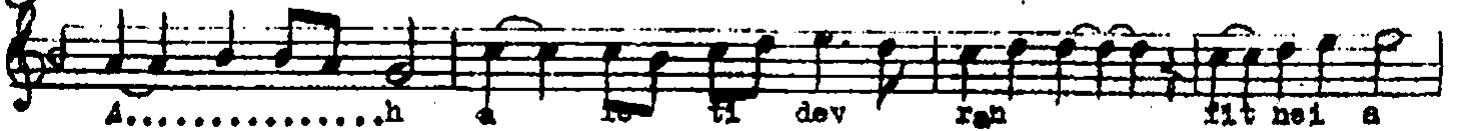
ah..... na lân o laym gel lân o laym gel



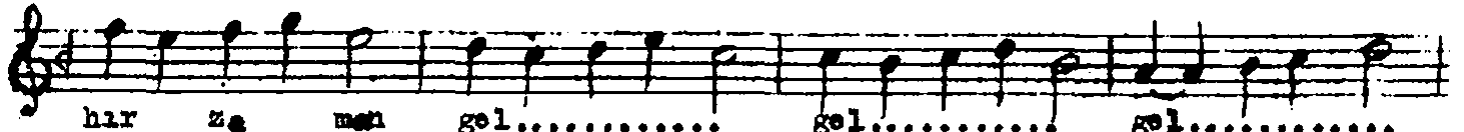
Ta bî şî mül ren gi gü li ter mi sin



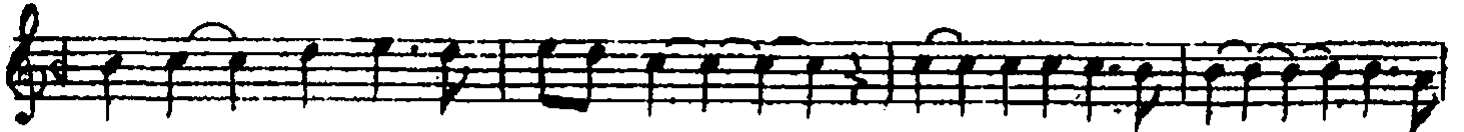
ne sin ne sin ne sin..... vay



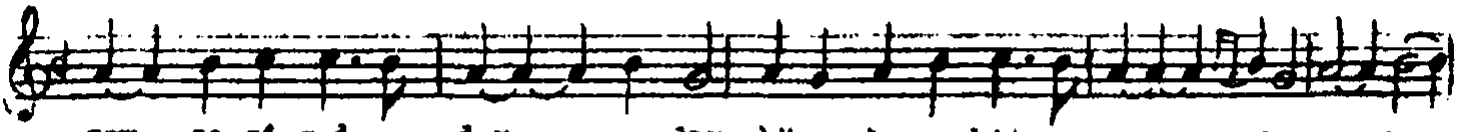
A.....h a le ti dev ran fit nei a



har za man gel..... gel..... gel.....



gel iş ve ba zim çeş mîfi sun kâr..... dar



gan ze şî gad dar..... dir böy.. le ce bir yar.... dir yarfan



Best dost beli be li ze le ğim be li be li me le ğim belibeli



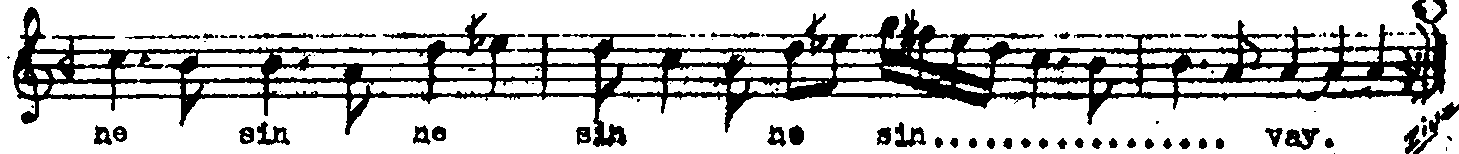
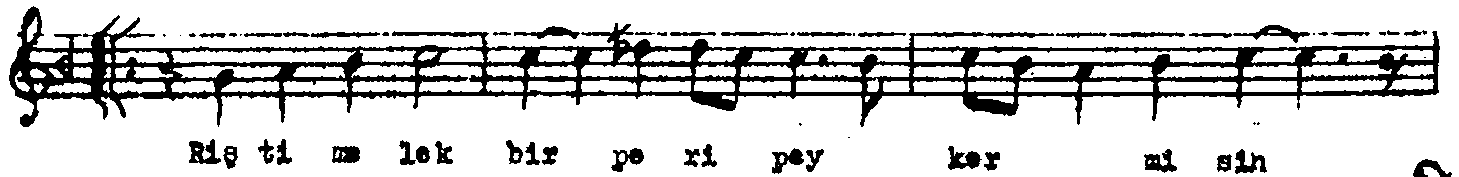
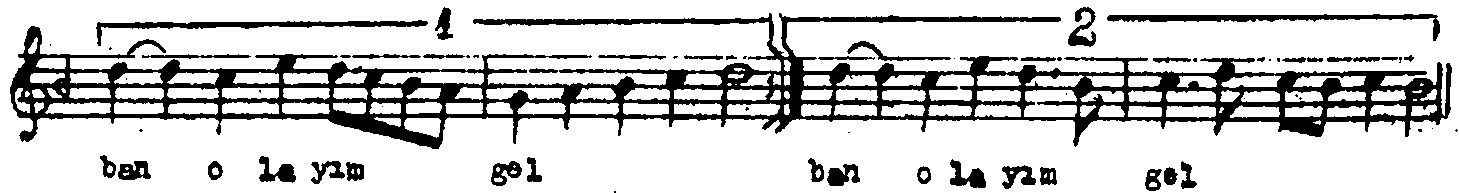
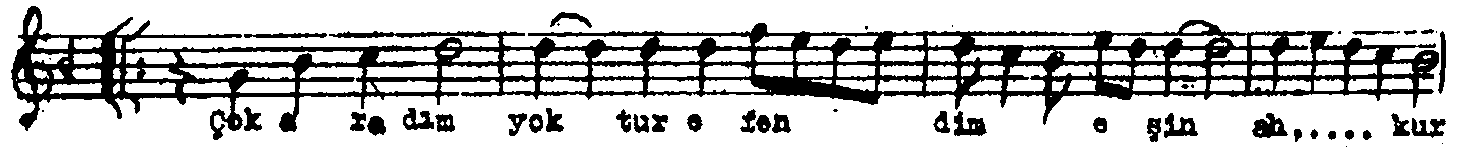
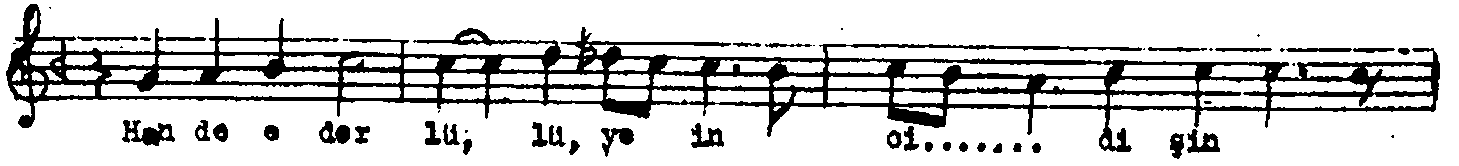
a ku sum ca ni e zi zim gi bi şük ker mi sin

(?)



ne sin ne sin ne sin..... vay

SÖYLE GÜZEL RÜHU
Beyati yürük semai devam.



Söyle güzel ruhu misavver misin
Tab-i şimil rengi gül-i ter misin, nesin
Goncaciğım daha küçüktür yaşın
Hände eder lü, lü, ye inoi dişin
Çok aradım yoktur eşin,
Riştî melek bir peri peyker misin ?.