

№=128

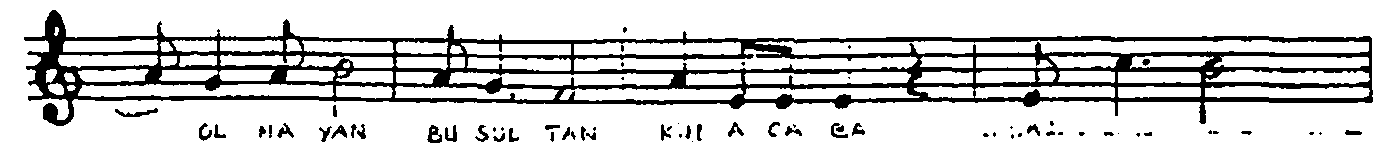
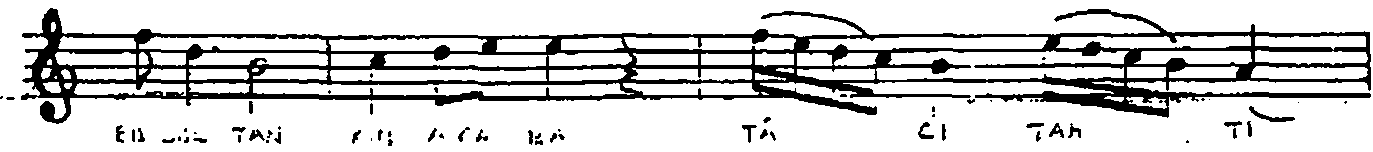
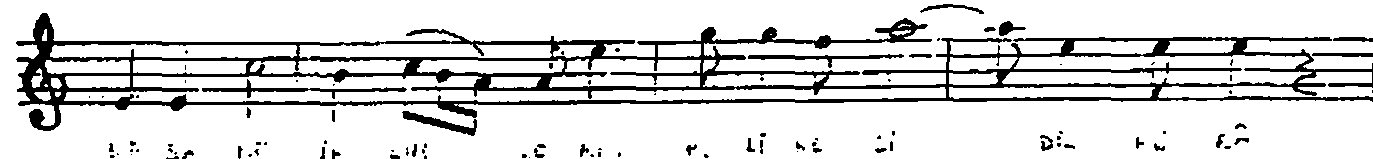
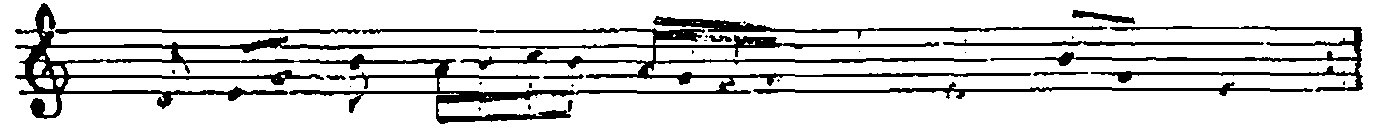
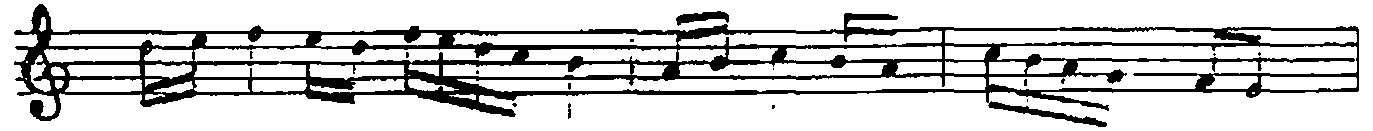
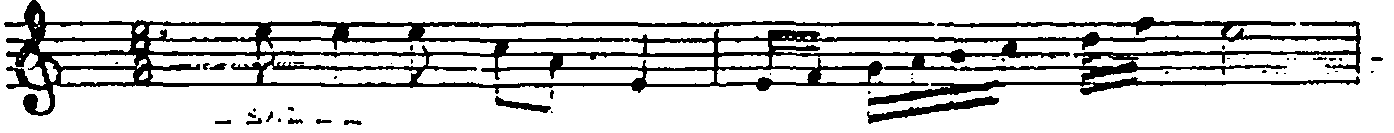
SURE: 3/25

USULÜ: DÜYEN

# AŞK'EFZÂ ŞARKI

- EFSÂNE İKLİMİNİN MELİKESİ -

SÖZÜ: NEDİM GAZAN KIZILCAVAZ



- SAZ - - - - - MÜ Sİ KİM LE CAŞ LA YAN  
 BİR SÜ NÜL DE TEN GÜ ZEL MÜ Sİ KİM LE CAŞ LA YAN  
 BİR SÜ NÜL DE TEN GÜ ZEL - SAZ - - - - -  
 PEN ZE NÂ KİM BİR SÜ ZEL MÜ SÜR BÂR SİM DE HA BÂ  
 RİM BE NÂ RİM BİR SÜ ZEL MÜ SÜR BÂR SİM DE HA BÂ (20)

İfşâne ikidilerin velikovi dil-rübâ  
 lâci, tahtı olmayan bu sultan kim acaba?  
 Müccihle çalayan bir gönülde tek güzel,  
 Penbe, nârin biri çışk. muzûr bahçede sabâ.