

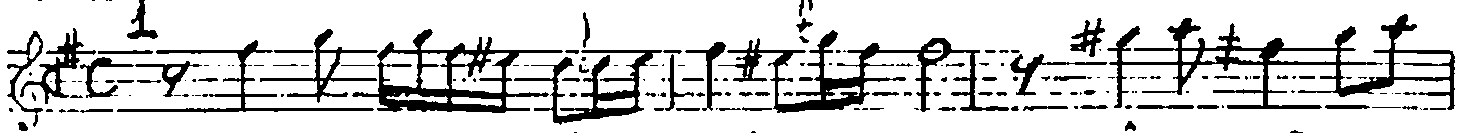
USÛL: SOFYÂN
1:48

EVCİLÂHÎ

(Ey sanem n'oldun, cânâ kastin var)

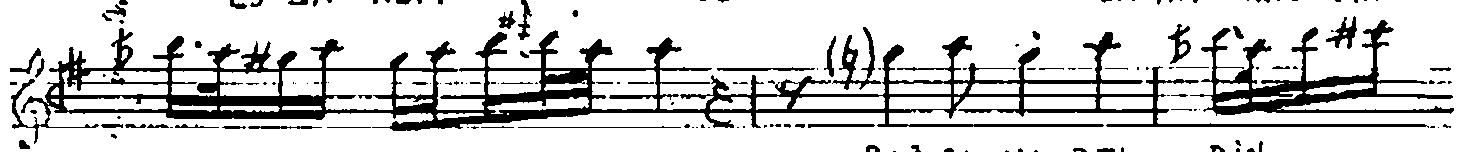
BESTE: BURSA'LI TÂLİP

GÜFTE: NİYÂZİ-Î MISRÎ



EY SA NEM N'OL DUN

CÂ NA KAS TIN



VAR

BAĞ RI MI DEL DİN



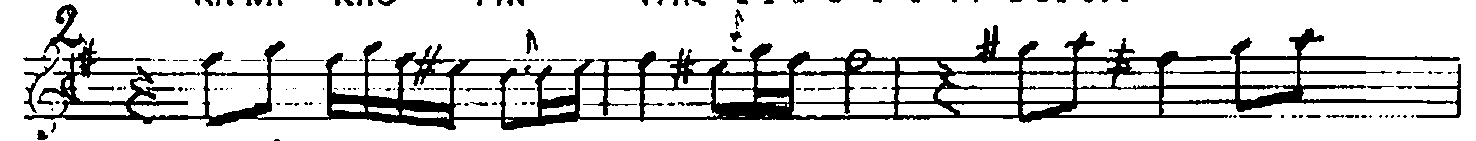
KA NA KAS TIN VAR (A MAN)



BAĞ RI MI DEL DİN



KA NA KAS TIN VAR



BE NI GÖR N'OL DUM

SA RA RİP SOL



DUM

VAS LIN_ U MAR KEN



HİC RE KAS TIN VAR (A MAN)



VAS LIN_ U MAR KEN



HİC RE KAS TIN VAR

1. EY SANEM N'OLDUN CÂNA KASTIN VAR
BAĞRIMI DELDİN KANA KASTIN VAR
2. BENİ GÖR N'OLDUM SARARIP SOLDUM
VASLIN UMAR KEN HİCRE KASTIN VAR

3

UM MA DIK ... BA ŞIM ... GAV GA YA SAL
 DIN ... PÂ DI ŞÂ HIM SEY ...
 ... RÂ NA KAS TIN VAR ... (A MAN) PÂ ... DI
 ŞÂ HIM.. SEY ... RÂ NA KAS TIN
 VAR ...

BU NI YÂ ZI YI ... AĞ LAT TI ĞIN ...
 DAN ... AN LA NIR KIM İH ...
 ... SÂ NA KAS TIN VAR ... (A MAN)
 AN ... LA NIR ... KIM. İH ... SÂ NA
 KAS TIN VAR ...

3. UMMADIK BAŞIM GAVGAYA SALDIN
 PÂDIŞÂHİM SEYRÂNA KASTIN VAR

6.5.1992

4. BU NİYÂZÎ'Yİ AĞLATTIĞINDAN
 İNLANIR KİM İHSÂNA KASTIN VAR