

(♩ = 144)

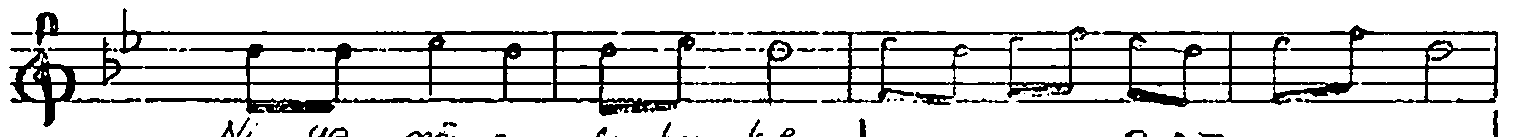
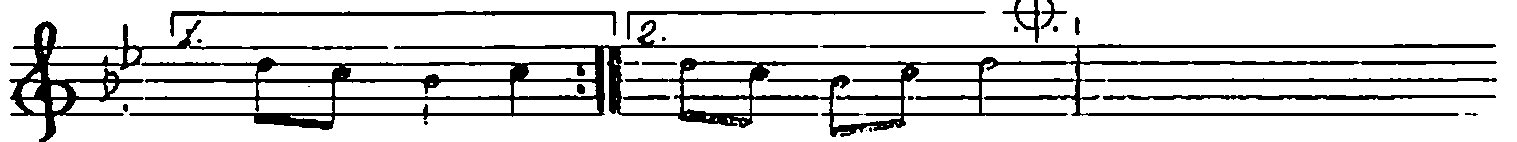
Nihâvend Şarkı

MÜZİK : A. GANI TAKMAZ

YANGINLAR KIVILCIMLARDAN ÇIKAR

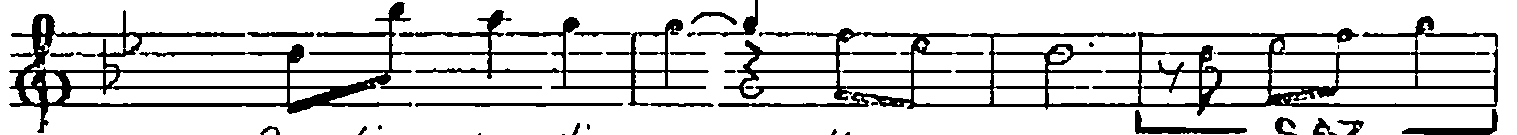
SÖZ : ATAMAN SÜTŞURUP

Semai



Ni ye mû na lı ba kıp

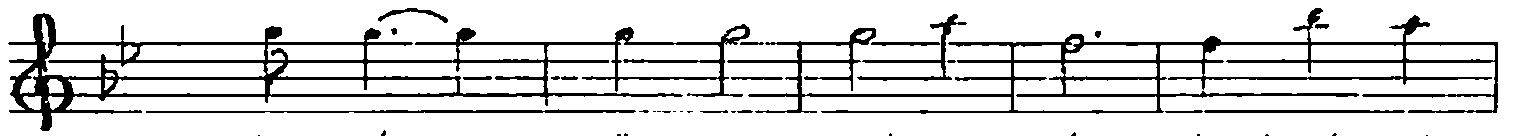
SAZ



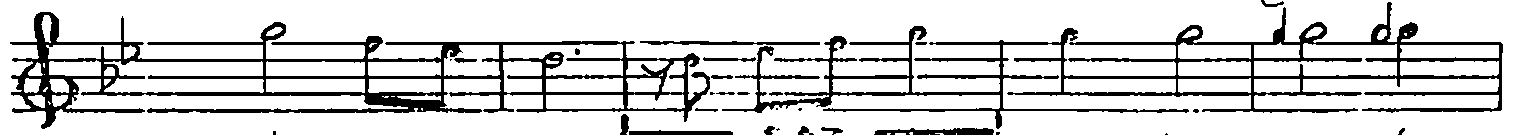
ge li ver din

ya nı ma

SAZ



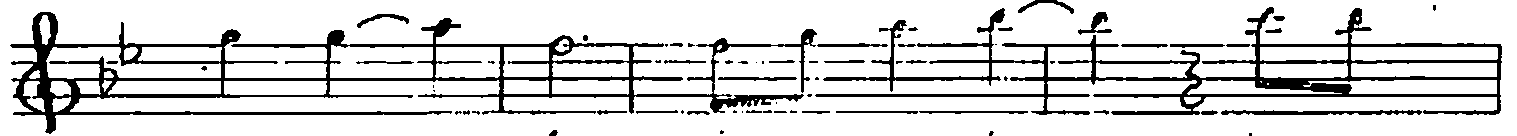
Ye şil göz lüm mak sa din kost-et-nik



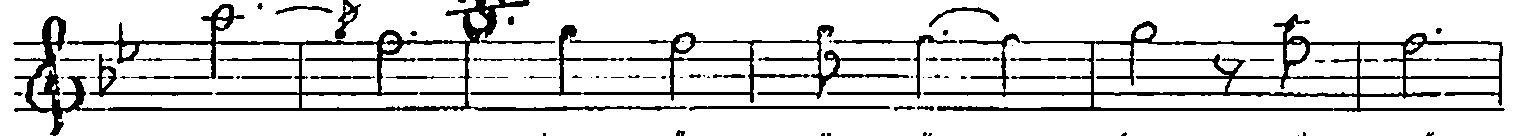
mi ca ni ma

SAZ

o iş vey le



o naz lo gi ri ver din ka nı



ma

bir göz

sü züş

bir

gü

lüş

- NİHAVEND SARKININ DEVAMI -

ni ce can la ri ya kar... SAZ

bi li yor sun SAZ

bi li yor sun

bi li yor sun SAZ Yan 9ın lar

ki vil cim lar dan ci kar D.C. 180

Du ru şun dan bel li dir

se ven — ler giz le mez ki

aşk bir gö nül — son — ci sı

to vuş — ma dan din mez ki

se ven — gö nül ya ni yor .

sev me yen ler bil mez ki

edvan