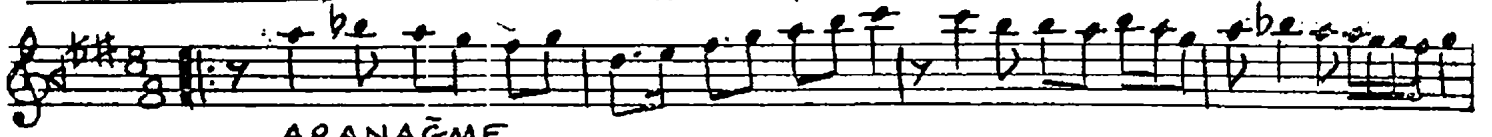


AÇIK TUTTUM KAPIMI ÇALMADAN GİRSİN DİYE

MÜZİK: METİN EVERES

DÜYEK (D=272) BAYATÎ-ARABAN ŞARFI

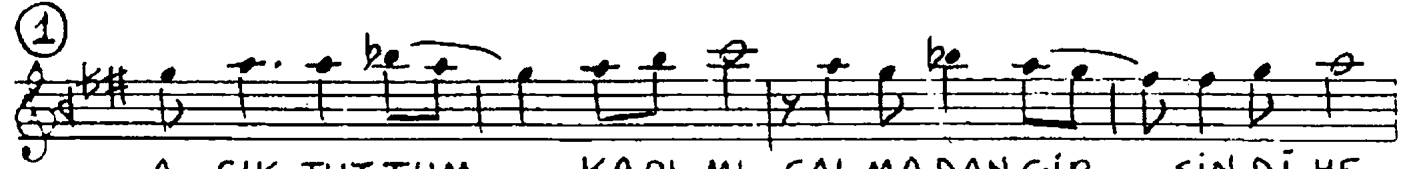
SÖZ: MEHMET ERBULAN



ARANAĞME



① ②



A ÇIK TUTTUM KAPI MI ÇALMADAN GİR SİN Dİ YE



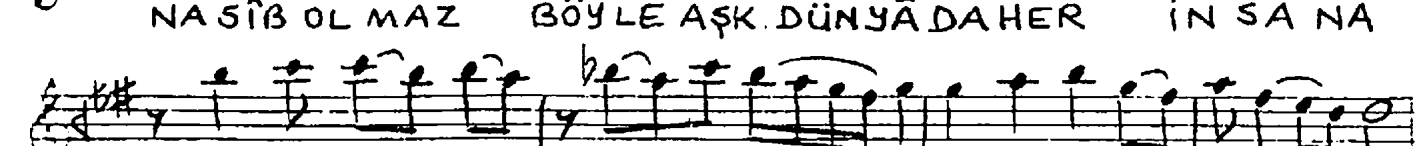
DU Ā ET TİM HER GE CE HABERSİZ GEL SİN Dİ YE



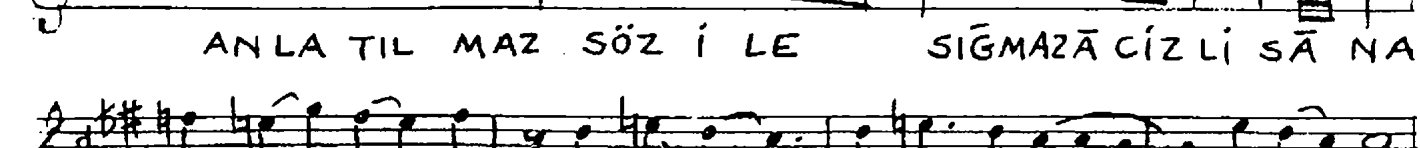
MUM YAK TIM TÜRBELE RE AŞ KIMI BİL SİN Dİ YE



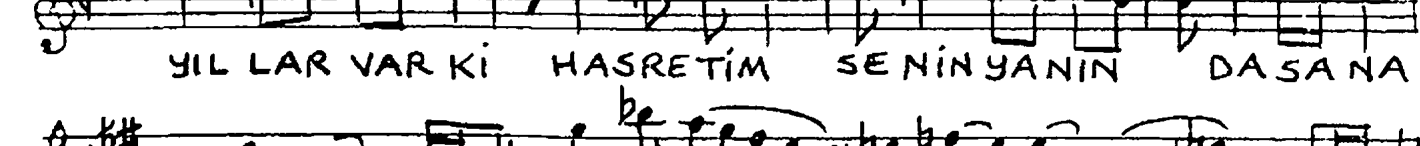
DU Ā ET TİM HER GE CE HABERSİZ GEL SİN Dİ YE



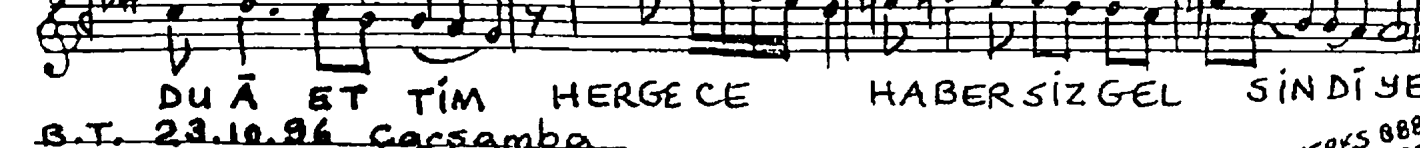
NASİB OL MAZ BÖYLE AŞK DÜNYĀ DA HER İN SA NA



AN LA TIL MAZ SÖZ İ LE SİĞ MAZ Ā CİZ Lİ SĀ NA



YIL LAR VAR KI HASRETİM SENİN YANIN DA SANA



DU Ā ET TİM HER GE CE HABERSİZ GEL SİN Dİ YE

S
O
N

B.T. 23.10.96 Çarşamba

AÇIK TUTTUM KAPIMI ÇALMADAN GİRSİN DİYE
DU Ā ETTİM HER GECE HABERSİZ GELSİN DİYE
MUM YAKTIM TÜRBELERE AŞKIMI BİLSİN DİYE
DU Ā ETTİM HER GECE HABERSİZ GELSİN DİYE

NASİB OLMAZ BÖYLE AŞK DÜNYADA HER İNSANA
ANLATILMAZ SÖZ İLE SİĞMAZ ĀCİZ Lİ SĀNA
YILLAR VARKİ HASRETİM SENİN YANINDA SANA
DU Ā ETTİM HER GECE HABERSİZ GELSİN DİYE

EVERES 8882
9.9.1997