

SOFYAN

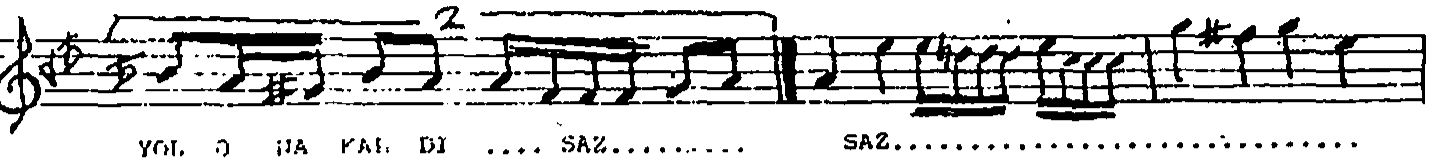
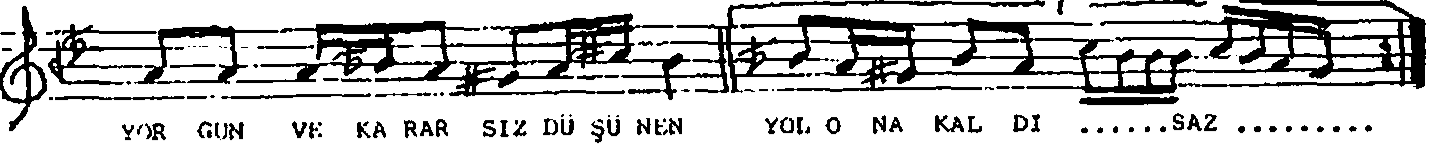
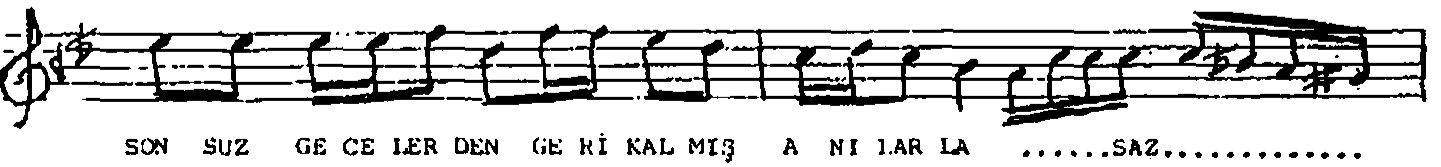
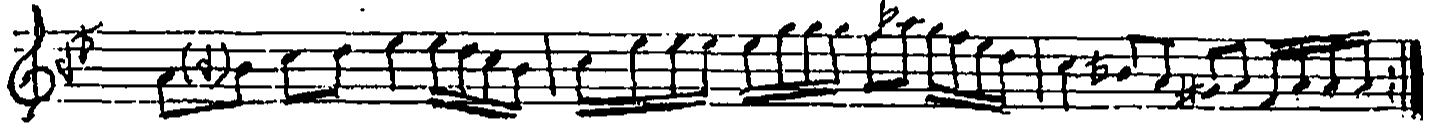
DUGAH PANTEZİ

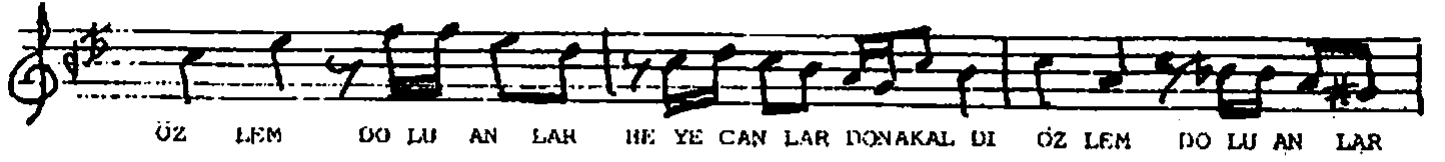
- Veda -

Fethi Karamahmutoglu

SOZ VE MUZİK

1:60

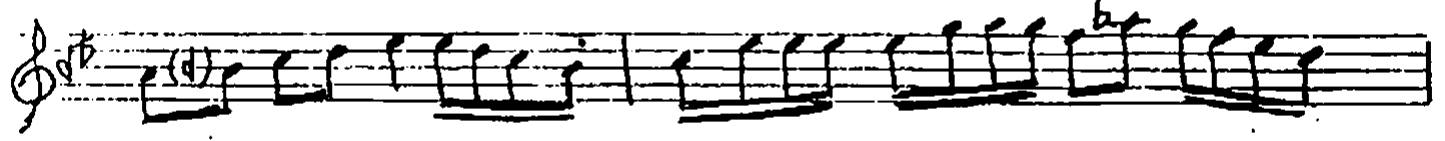




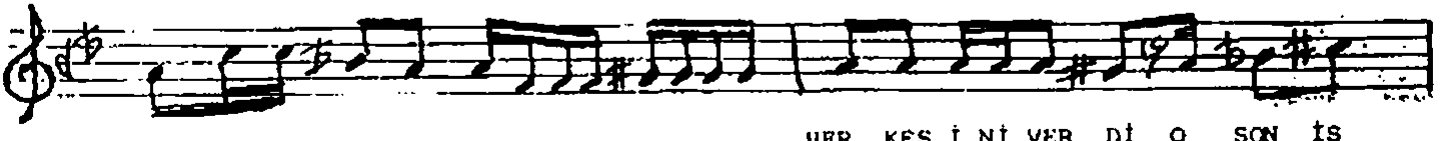
ÖZ LEM DO LU AN LAR HE YE CAN LAR DONAKAL DI ÖZ LEM DO LU AN LAR



HE YE CAN LAR DO NA KAL DISAZ



AK ŞAM TI RE NİN DE BİR İ VAR



EN SO NA KAL DISAZ..... HER KES İ Nİ VER Dİ O SON İS



TAS YO NA KAL DISAZ..... (SON)

AKŞAM TİRENİNDE BİRİ VAR, EN SONA KALDI,
HERKES İNİVERDİ, O SON İSTASYONA KALDI.
SONSUZ GECELERDEN GERİ KALMIŞ ANILARLA
~~YORGUN VE KARARSIZ DÜŞENEN YOL ONA KALDI.~~

RAYLAR UZANIRKEN, BİTİŞİRMİŞ GİBİ UÇTA,
ELLER VE SELAMLAR, SÖNÜVERDİ DİR AVUÇTA..
SONSUZ TÜNELİNDEN BİRİ GEÇTİ VE SONUÇTA,
ÖZLEM DO LU ANLAR, HEYECANLAR DONAKALDI.